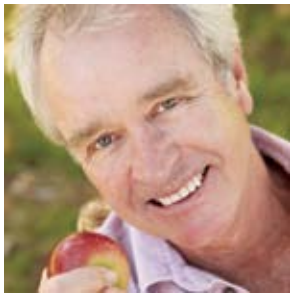


# & Medicare You



2014



This is the official U.S. government Medicare handbook:

- ★ What's important in 2014 (page 4)
- ★ What Medicare covers (page 29)



You can keep getting a printed copy of this handbook, but you can also choose to get this handbook in other ways that can save tax dollars and help the environment.

### **Want to read the handbook on your computer and stop getting a printed copy?**

Sign up at [MyMedicare.gov](http://MyMedicare.gov) to get your future “Medicare & You” handbooks electronically (also called the “eHandbook”) on your computer. We’ll send you an email next September when the new eHandbook is available. You won’t get a printed copy of your handbook in the mail if you choose to get it electronically. If you change your mind, visit [MyMedicare.gov](http://MyMedicare.gov) to switch back to a printed copy.

### **Have an e-Reader (like an iPad, Nook, Sony Reader, or Kindle)?**



Visit [Medicare.gov/publications](http://Medicare.gov/publications) to download a free digital version of this handbook to your e-Reader. You can get the same important information that’s included in the printed version in an easy-to-read format that you can take anywhere you go. This option is available for all e-Reader devices. You’ll still get a printed copy of the handbook in the mail if you choose to get the digital version.

### **Please keep this handbook for future reference.**

Information was correct when it was printed. Changes may occur after printing. Visit [Medicare.gov](http://Medicare.gov) or call 1-800-MEDICARE (1-800-633-4227) to get the most current information. TTY users should call 1-877-486-2048.

“Medicare & You” isn’t a legal document. Official Medicare Program legal guidance is contained in the relevant statutes, regulations, and rulings.

# Welcome to “Medicare & You” 2014

This is an exciting and historic time for health care in our nation.

Today, thanks to the Affordable Care Act, we have stronger, more reliable health coverage to help all Americans get or stay healthy. Also, millions of people with Medicare like you have:

- Taken advantage of expanded benefits like preventive services, cancer screenings, and yearly “Wellness” visits — without paying a dollar out-of-pocket.
- Saved money in the prescription drug coverage gap (“donut hole”) with big discounts on covered brand-name drugs.
- Used new tools like Medicare’s Blue Button on MyMedicare.gov.

Speaking of the Blue Button, if you haven’t tried it yet, now’s the best time to check it out. We’ve expanded it to let you view and download even more of your claims information to give you a better picture of your overall health. This can help you make more informed decisions about your care and can help you give your health care providers a more complete view of your health history.

These changes are only the beginning. Starting January 1, 2014, millions of people without Medicare will have access to quality health insurance through the new Health Insurance Marketplace. This means that your family, friends, and neighbors who don’t have health insurance now will have what you love about Medicare — the peace of mind that comes from being covered.

The Marketplace isn’t changing Medicare. No matter how you get Medicare, you’ll still have the benefits and security you have now. Medicare will be here for you, stronger than ever.

If you have specific questions about Medicare, visit Medicare.gov to find the answers you need.

You also can call 1-800-MEDICARE (1-800-633-4227). TTY users should call 1-877-486-2048. For more information about the Marketplace, visit HealthCare.gov.

Yours in good health,

/s/

/s/

Kathleen Sebelius

Marilyn B. Tavenner

Secretary

Administrator

U.S. Department of  
Health and Human Services

Centers for Medicare & Medicaid  
Services

## What's Important in 2014

### Stay healthy with Medicare-covered preventive services

See page 55.



Medicare pays for many preventive services that can detect health problems early when they're easier to treat. Ask your health care provider what services you need.

### Keep track of your personal health information

See page 133.

Medicare's Blue Button has been expanded to provide better access to your Medicare claims and personal health information.



### Continued help in the prescription drug coverage gap

See page 91–92.

If you reach the coverage gap in your Medicare prescription drug coverage, you'll qualify for savings on brand-name and generic drugs.



### Where to find out what you pay for Medicare (Part A and Part B)



The 2014 Medicare premium and deductible amounts weren't available at the time of printing. To get the most up-to-date cost information, visit [Medicare.gov](http://Medicare.gov) or call 1-800-MEDICARE (1-800-633-4227). TTY users should call 1-877-486-2048.

# Contents

- 7 Index—Find a Specific Topic**
- 13 Important Enrollment Information**
  - 13 Coverage and costs change yearly
  - 13 Open Enrollment Period
- 15 Section 1—Learn How Medicare Works**
  - 15 What are the different parts of Medicare?
  - 16 What are my Medicare coverage choices?
  - 17 Where can I get my questions answered?
- 19 Section 2—Signing Up for Medicare Part A & Part B**
  - 19 Some people get Part A and Part B automatically
  - 20 Some people have to sign up for Part A and/or Part B
  - 21 If I'm not automatically enrolled, when can I sign up?
  - 22 Should I get Part B?
  - 24 How does my other insurance work with Medicare?
  - 26 How much does Part A coverage cost?
  - 27 How much does Part B coverage cost?
- 29 Section 3—Find Out if Medicare Covers Your Test, Service, or Item**
  - 29 What services does Medicare cover?
  - 30 Part A-covered services
  - 35 Part B-covered services
  - 55 Want to keep track of your preventive services?
  - 56 What's NOT covered by Part A and Part B?
- 57 Section 4—Choose Your Health & Prescription Drug Coverage**
  - 58 What if I need help deciding how to get my Medicare?
  - 59 What are my Medicare coverage choices?
  - 60 What should I consider when choosing or changing my coverage?
- 61 Section 5—Get Information about Your Medicare Health Coverage Choices**
  - 61 How does Original Medicare work?
  - 67 What are Medicare Supplement Insurance (Medigap) policies?

- 72 What are Medicare Advantage Plans (Part C)?
- 83 Are there other types of Medicare health plans?
- 87 Section 6—Get Information about Prescription Drug Coverage**
  - 87 How does Medicare prescription drug coverage (Part D) work?
  - 88 When can I join, switch, or drop a Medicare drug plan?
  - 90 What do I pay?
  - 96 What drugs are covered?
- 103 Section 7—Get Help Paying Your Health & Prescription Drug Costs**
  - 103 What if I need help paying my Medicare prescription drug costs?
  - 108 What if I need help paying my Medicare health care costs?
- 113 Section 8—Know Your Rights & How to Protect Yourself from Fraud**
  - 113 What are my Medicare rights?
  - 114 What’s an appeal?
  - 118 What’s an “Advance Beneficiary Notice of Noncoverage” (ABN)?
  - 119 How does Medicare use my personal information?
  - 122 How can I protect myself from identity theft?
  - 122 How can I protect myself & Medicare from fraud?
- 127 Section 9—Plan Ahead for Long-Term Care**
  - 127 How do I plan for long-term care?
  - 127 How do I pay for long-term care?
  - 130 What are advance directives?
- 131 Section 10—Get More Information**
  - 131 Where can I get personalized help?
  - 133 Where can I find Medicare information online?
  - 134 How do I compare the quality of plans and providers?
  - 135 What’s Medicare doing to better coordinate my care?
  - 138 Can I manage my health information online?
  - 139 Are there other ways to get Medicare information?
  - 140 Are resources available for caregivers?
  - 141 State Health Insurance Assistance Program (SHIPs)
- 145 Section 11—Definitions**

# Index

## Find a Specific Topic

**Note:** The page numbers shown in **bold** provide the most detailed information.

### A

Abdominal aortic aneurysm **35, 55**  
 Accountable Care Organizations (ACOs) 136  
 Acupuncture 56  
 Advance Beneficiary Notice of Noncoverage (ABN) 118–119  
 Advance directives 130  
 Advantage Plan (see Medicare Advantage Plan)  
 Alcohol misuse screening and counseling **35, 55**  
 ALS (Amyotrophic Lateral Sclerosis) 19  
 Ambulance services **36, 53**  
 Ambulatory surgical center 36  
 Appeal 63–64, 74, **114–119**  
 Artificial limbs 49  
 Assignment 34, **64–65, 145**

### B

Balance exam 43  
 Barium enema **39, 55**  
 Benefit period 32, **145**  
 Bills **63, 132**  
 Blood 30, 36  
 Blue Button 133  
 Bone mass measurement (bone density) **37, 55**  
 Braces (arm, leg, back, neck) 49  
 Breast exam (clinical) 38

### C

Cardiac rehabilitation 37  
 Cardiovascular disease (behavioral therapy) **37, 55**  
 Cardiovascular screenings **38, 55**

### C (continued)

Caregivers 140  
 Cataract 42  
 Catastrophic coverage 92  
 Chemotherapy **38, 74**  
 Children's Health Insurance Program (CHIP) **112, 139**  
 Chiropractic services 38  
 Claims 62, **64–65**  
 Clinical research studies **39, 74**  
 COBRA 22–23, **100**  
 Colonoscopy **39, 55**  
 Colorectal cancer screenings **39, 55**  
 Contract (private) 65–66  
 Coordination of benefits 17, **24–25**  
 Cosmetic surgery 56  
 Cost Plan **83–84, 87, 91**  
 Costs (copayments, coinsurance, deductibles, and premiums)  
   Comparison of plan costs 58, 150  
   Extra Help paying for Part D 103–107  
   Help with Part A and Part B costs 108–109  
   Medicare Advantage Plans 77–78  
   Medicare Prescription Drug Plans (Part D) 91–94  
   Original Medicare 62–63  
   Part A and Part B **26–27, 30–34**  
   Part D late enrollment penalty 94–95  
   Yearly changes 13  
 Coverage determination (Part D) 116–117  
 Coverage gap 4, **91–92**

**Note:** The page numbers shown in **bold** provide the most detailed information.

## C (continued)

Covered services (Part A and Part B) 29–55  
 Creditable prescription drug coverage 87–88,  
**94–96**, 100–101, 145  
 Custodial care 29, 33, 127–129, **146**

## D

Defibrillator (implantable automatic) 40  
 Definitions 145–148  
 Demonstrations/Pilot programs 85, 111, **146**, 147  
 Dental care and dentures **56**, 72  
 Department of Defense 17  
 Department of Health and Human Services (Office  
 for Civil Rights) 125  
 Department of Veterans Affairs 18, 94, **101**, 129  
 Depression **40**, 46, 55  
 Diabetes **40–41**, 43, 44, 79  
 Dialysis (kidney dialysis) **45**, 78, 133  
 Discrimination 113, **125**  
 Disenroll 71, 83, **90**, 148  
 Donut hole **91–93**  
 Drug plan  
   Costs 91–94  
   Enrollment 88–89  
   Types of plans 87  
   What’s covered 97  
   Yearly changes 13  
 Drugs (outpatient) 48  
 Dual eligibles 110  
 Durable medical equipment (like walkers) 15, 30,  
 31, **41–42**, 44, 48, 65

## E

EKG **42**, 51  
 Eldercare Locator 126, **129**, 140

## E (continued)

Electronic handbook 133  
 Electronic Health Record (EHR) 60, **135**, 138  
 Electronic prescribing 60, **136**  
 Emergency department services **42**, 97  
 Employer group health plan coverage  
   Costs for Part A may be different 30  
   Enrolling in Part A and B 21–22  
   Medicare Advantage Plans (Part C) **75**, 76  
   Medigap Open Enrollment 23, **70**  
   Prescription drug coverage 60, 67, **88**, 94, 100  
 End-Stage Renal Disease (ESRD) 15, 20, 22, 24, 44,  
**76**  
 Enroll  
   Part A 19–22  
   Part B 19–23  
   Part C 74–75  
   Part D 80–82, 88–90  
 e-Reader inside front cover  
 Errors on statements 123  
 Exception (Part D) 96, 97, **116**  
 Extra Help (help paying Medicare drug costs) 17, 87,  
 88, **103–107**, 146  
 Eyeglasses 42

## F

Fecal occult blood test **39**, 55  
 Federal Employee Health Benefits Program 18, **101**  
 Federally-qualified health center services 43  
 Flexible sigmoidoscopy **39**, 55  
 Flu shot **43**, 55  
 Foot exam 43  
 Formulary 60, 90, 96, 116, **146**  
 Fraud 122–125



**Note:** The page numbers shown in **bold** provide the most detailed information.

## G

Gap (coverage) 4, **91–92**  
 General Enrollment Period **21**, 22, 28  
 Glaucoma test **43**, 55

## H

Health care proxy 130  
 Health Information Technology (Health IT) 135  
 Health Insurance Marketplace 14  
 Health Maintenance Organization (HMO) 73, **78**,  
 148  
 Health risk assessment 54  
 Hearing aids 43, **56**  
 Help with costs 103–112  
 Hepatitis B shot **44**, 55  
 HIV screening **44**, 55  
 Home health care **15**, 30, 44, 119  
 Hospice care 15, **31**, 69, 72  
 Hospital care (inpatient coverage) **32**, 145

## I

Identity theft 122  
 Indian Health Service 94, **101**  
 Initial Enrollment Period **21**, 28, 95  
 Inpatient **32**, 146  
 Institution 79, 80, 88, 104, 106, **146**

## J

Join  
     Medicare drug plan 57, 59, 66, **88–90**  
     Medicare health plan 59, **74–76**

## K

Kidney dialysis **45**, 78, 134  
 Kidney disease education services 45  
 Kidney transplant 15, 20, **45**, 76

## L

Laboratory services **45**, 51  
 Late enrollment penalty (see Penalty)  
 Lifetime reserve days 32, **146**  
 Limited income **103–112**, 146  
 Living will 130  
 Long-term care 33, 56, 84, 127–129, **147**  
 Low-Income Subsidy (LIS) (Extra Help) 17, 87, 88,  
**103–107**, 146

## M

Mammogram **37**, 55, 78–79  
 Marketplace 14  
 Medicaid 25, 79, 85, 104–106, **110–111**, 124, 128  
 Medical equipment (See Durable medical  
 equipment)  
 Medical nutrition therapy **45**, 55  
 Medical Savings Account (MSA) Plans **73**, 87  
 Medicare  
     Part A 15, 16, 19–21, **29–33**  
     Part B 15, 16, 19–23, **34–55**  
     Part C 15, 16, **72–84**  
     Part D 15, 16, **87–102**  
 Medicare Advantage Plans (like an HMO or PPO)  
     Costs 77  
     How they work with other coverage 75  
     Join, switch, or drop 80–82  
     Overview 72  
     Plan types 73, **78–79**  
     Star ratings 81  
 Medicare Authorization to Disclose Personal Health  
 Information 132  
 Medicare Beneficiary Ombudsman 126  
 Medicare card (replacement) 17  
 Medicare Drug Integrity Contractor (MEDIC) 96, **124**

**Note:** The page numbers shown in **bold** provide the most detailed information.

## M (continued)

Medicare.gov 17, **133**  
 Medicare–Medicaid Plans 111  
 Medicare prescription drug coverage 87–102  
 Medicare Savings Programs 104–105, **108–109**  
 Medicare SELECT 68  
 Medicare Summary Notice (MSN) **63–64**, 115, 123  
 Medicare Supplement Insurance (Medigap) 16, 23, 59, 62, **67–71**, 100, 127  
 Medication Therapy Management Program 98–99  
 Medigap (see Medicare Supplement Insurance)  
 Mental health care 32, **46**  
 MyMedicare.gov 64, 123, **133**

## N

Non-doctor services 41  
 Nurse practitioner 31, **41**, 46  
 Nursing home 31, 79, 84, 106, 110, **127–129**, 134, 146, 147  
 Nutrition therapy services **45**, 55

## O

Obesity screening and counseling **46**, 55  
 Occupational therapy 30, 44, **47**  
 Office for Civil Rights **18**, 121, 125  
 Office of Personnel Management **18**, 101  
 Ombudsman 126  
 Open enrollment **13**, 23, 70, 81, 114  
 Original Medicare 16, 29, 34, **61–63**, 66  
 Orthotic items 49  
 Outpatient hospital services 47  
 Oxygen 41

## P

Pap test **38**, 55  
 Payment options (premium) 28  
 Pelvic exam **38**, 55  
 Penalty (late enrollment)  
   Part A 26  
   Part B 27  
   Part D 94–95  
 Personal Health Record (PHR) 138  
 Pharmaceutical Assistance Programs 111  
 Physical therapy 30, 33, 44, **48**, 148  
 Physician assistant **41**, 46  
 Pilot/Demonstration programs **85**, 111, 146, 147  
 Pneumococcal shot **48**, 55  
 Power of attorney 130  
 Preferred Provider Organization (PPO) Plan 73, 77, **78**  
 Prescription drug coverage (Part D)  
   Appeals 116–117  
   Coverage under Part A 30–33  
   Coverage under Part B 48  
   Join, switch, or drop 88–91  
   Late enrollment penalty 94–95  
   Medicare Advantage Plans 75, 78–80  
   Overview 87–102  
 Preventive services **35–55**, 148  
 Primary care doctor 35, 37, 46, 50, 62, 78–79, **148**  
 Privacy notice 120–121  
 Private contract 65  
 Private Fee-for-Service (PFFS) Plans 73, **79**  
 Programs of All-inclusive Care for the Elderly (PACE) **84**, 111, 129, 147  
 Prostate screening (PSA Test) **49**, 55

**Note:** The page numbers shown in **bold** provide the most detailed information.

## P (continued)

Proxy (health care) 130  
 Publications 139  
 Pulmonary rehabilitation 49

## Q

Quality Improvement Organization (QIO) 18, 56,  
 117–118, **148**  
 Quality of care 18, 60, 85, **133–134**

## R

Railroad Retirement Board (RRB) **18**, 19–20, 27–28,  
 64, 91, 107, 132  
 Referral  
   Consider when choosing a plan 60  
   Definition 148  
   Medicare Advantage Plans 72, 78–79  
   Original Medicare 62  
   Part B-covered services 35, 40, 53  
 Religious non-medical health care institution 33  
 Respite care 31  
 Retiree health insurance (coverage) **22–23**, 100  
 Rights 113–126  
 Rural health clinic 49

## S

Second surgical opinions 50  
 Senior Medicare Patrol (SMP) Program 124  
 Service area 75, 80, 84, 87, 88, **148**  
 Sexually transmitted infections screening and  
   counseling **50**, 55  
 Shingles vaccine 96  
 Shots (vaccinations) 43, 44, 48, **55**, 148  
 Sigmoidoscopy **39**, 55

## S (continued)

Skilled nursing facility (SNF) care 15, **29–33**, 44, 69,  
 74, 148  
 Smoking cessation (tobacco-use cessation) **51**, 55  
 Social Security  
   Change address on MSN 64  
   Extra Help paying Part D costs 105–107  
   Get questions answered 17  
   Part A and Part B premiums 26–28  
   Part D premium 91  
   Sign up for Parts A and B 19–20  
   Supplemental Security Income benefits 112  
 Special Enrollment Period  
   Part A and Part B 21–22  
   Part C (Medicare Advantage Plans) 80–82  
   Part D (Medicare Prescription Drug Plans) 88–89  
 Special Needs Plans (SNP) 73, 76, **79**  
 Speech-language pathology 30, 44, **50**  
 State Health Insurance Assistance Program  
   (SHIP) 17, 58, 105, 117, 122, **132**, 141–144  
 State Medical Assistance (Medicaid) office 84, 105,  
   **109–112**, 124, 128  
 State Pharmacy Assistance Programs (SPAP) 111  
 Supplemental policy (Medigap)  
   Drug coverage **100**, 114  
   Medicare Advantage Plans 70  
   Open enrollment **23**, 70  
   Original Medicare 16, 59, **62**, 67  
   Overview 67–71  
 Supplemental Security Income (SSI) 104, **112**  
 Supplies (medical) 30, 32, **41–42**, 44–45, 49  
 Surgical dressing services 50

**Note:** The page number shown in **bold** provides the most detailed information.

## T

Telehealth 51  
Tiers (drug formulary) 60, 90, **96**, 116, 146  
Tobacco-use cessation counseling **51**, 55  
Transplant services **20**, 76  
Travel **52–53**, 60, 67, 69  
TRICARE 17, 23, 25, 94, **101**  
TTY 131, **148**

## U

Union  
Costs for Part A may be different 30  
Enrolling in Part A and Part B **22**, 24  
Medicare Advantage Plan 75  
Medigap Open Enrollment 23, **70**  
Prescription drug coverage **66**, 88, 100  
Urgently needed care 53

## V

Vaccinations (shots) 43, 44, 48, **55**, 148  
Veterans' benefits (VA) 59, **101**, 129  
Vision (eye care) **56**, 72

## W

Walkers **41**  
"Welcome to Medicare preventive visit" 35, 42, **53**,  
55  
Wellness visit **54**, 55  
Wheelchairs 41

## X

X-ray 38, 47, **51**

# Important Enrollment Information

You don't need to sign up for Medicare each year. However, each year you'll have a chance to review your coverage and make changes.

## Coverage and costs change yearly

Medicare health plans and prescription drug plans can change costs and coverage each year. If you're in a Medicare health or prescription drug plan, always review the materials your plan sends you each year, like the "Evidence of Coverage" (EOC) and "Annual Notice of Change" (ANOC). Make sure your plan will still meet your needs for the following year. If you're satisfied that your current plan will meet your needs for next year, you don't need to do anything.

## Open Enrollment Period

**Mark your calendar with these important dates!** In most cases, this may be the one chance you have each year to make a change to your health and prescription drug coverage.

October 1–  
October 15, 2013

**Start comparing your coverage with other options.** See pages 57–60.

October 15–  
December 7, 2013

**Change your Medicare health or prescription drug coverage for 2014, if you decide to.** See pages 80–82 and 88–89 for other times when you can switch your coverage.

January 1, 2014

**New coverage begins if you made a change.** New costs and benefit changes also begin if you kept your existing Medicare health or prescription drug coverage and your plan made changes.

Definitions of blue words are on pages 145–148.

## Introducing the Health Insurance Marketplace

The Health Insurance Marketplace, a key part of the Affordable Care Act, will take effect in 2014. It's a new way for individuals, families, and employees of small businesses to get health insurance. **Medicare isn't part of the Marketplace.**

### **If I already have Medicare, are my benefits changing because of the Marketplace?**

No. Your Medicare benefits aren't changing. No matter how you get Medicare, whether through Original Medicare or a Medicare Advantage Plan, you'll still have the same benefits and security you have now, and you won't have to make any changes.

For more information about the Marketplace, visit [HealthCare.gov](http://HealthCare.gov).

Definitions  
of blue words  
are on pages  
145–148.

# Section 1—

## Learn How Medicare Works

Medicare is health insurance for people 65 or older, people under 65 with certain disabilities, and people of any age with End-Stage Renal Disease (ESRD) (permanent kidney failure requiring dialysis or a kidney transplant).

### What are the different parts of Medicare?

#### Medicare Part A (Hospital Insurance) helps cover:

See  
pages  
29–33.

- Inpatient care in hospitals
- [Skilled nursing facility care](#)
- Hospice care
- Home health care

#### Medicare Part B (Medical Insurance) helps cover:

See  
pages  
34–55.

- Services from doctors and other health care providers
- Outpatient care
- Home health care
- Durable medical equipment
- Some [preventive services](#)

#### Medicare Part C (Medicare Advantage):

See  
pages  
72–83.

- Includes all benefits and services covered under Part A and Part B
- Run by Medicare-approved private insurance companies
- Usually includes Medicare prescription drug coverage (Part D) as part of the plan
- May include extra benefits and services for an extra cost

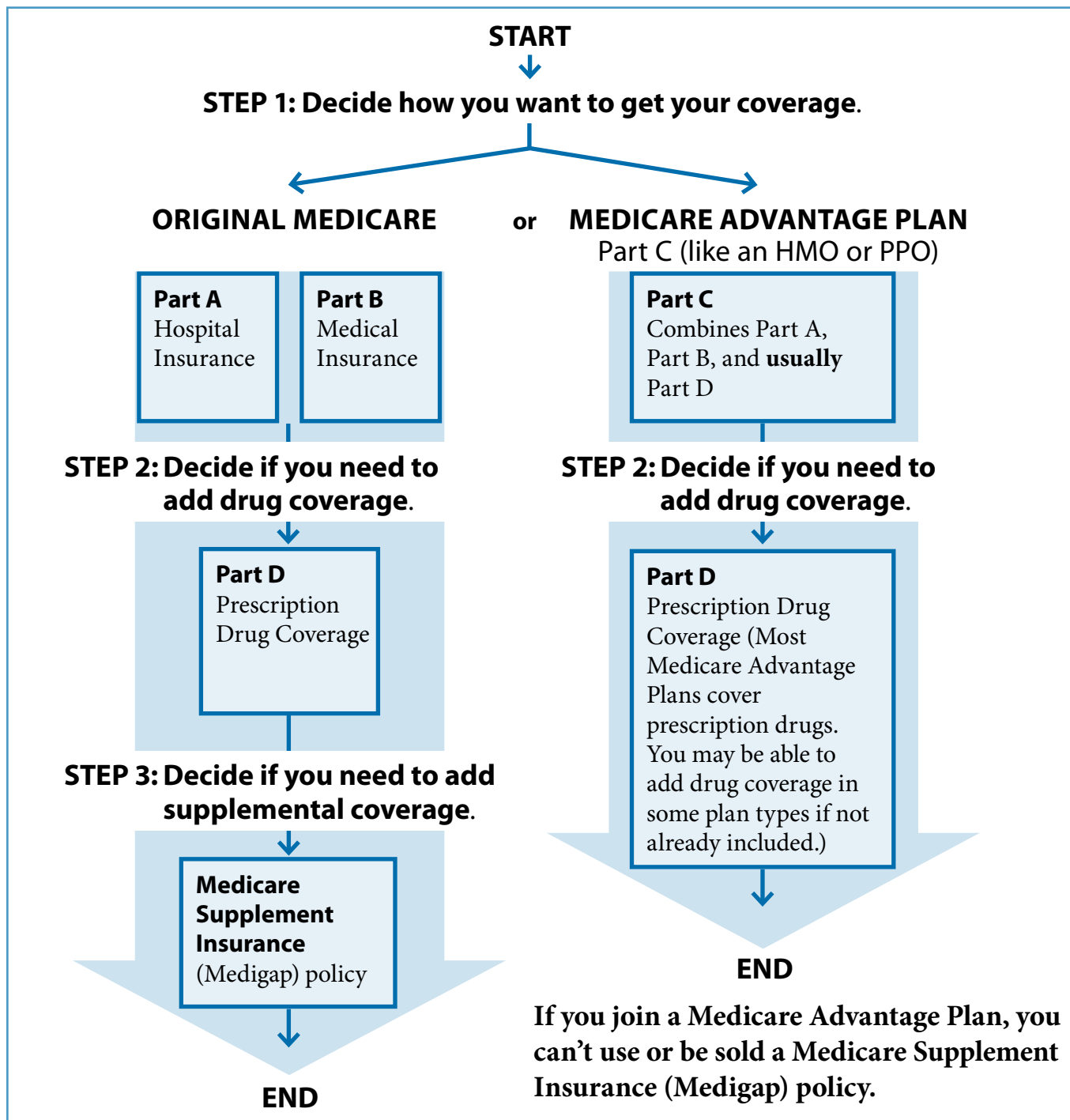
#### Medicare Part D (Medicare prescription drug coverage):

See  
pages  
87–102.

- Helps cover the cost of prescription drugs
- Run by Medicare-approved private insurance companies
- May help lower your prescription drug costs and help protect against higher costs in the future

## What are my Medicare coverage choices?

There are 2 main ways to get your Medicare coverage—Original Medicare or a Medicare Advantage Plan. Use these steps to help you decide which way to get your coverage. Your choice is important, but not final. Remember, you'll have at least one chance each year to make changes to your Medicare coverage.



See page 59 for more details about your coverage choices.



## Where can I get my questions answered?

### 1-800-MEDICARE (1-800-633-4227)



Get general or claims-specific Medicare information and make changes to your Medicare coverage.

If you need help in a language other than English or Spanish, say “Agent” to talk to a customer service representative.

TTY 1-877-486-2048  
[Medicare.gov](https://www.Medicare.gov)

### State Health Insurance Assistance Program (SHIP)

Get personalized Medicare counseling at no cost to you. See pages 141–144 for the phone number.

### Social Security

Get a replacement Medicare or Social Security card, report a change to your address or name, find out if you’re eligible for Part A and/or Part B and how to enroll, apply for [Extra Help](#) with Medicare prescription drug costs, ask questions about Part A and Part B [premiums](#), and report a death.

1-800-772-1213  
 TTY 1-800-325-0778  
[socialsecurity.gov](https://www.socialsecurity.gov)

### Medicare Coordination of Benefits Contractor (COBC)

Find out if Medicare or your other insurance pays first. Let the COBC know if you have other insurance, or if you need to report changes in your insurance information.

1-800-999-1118  
 TTY 1-800-318-8782

### Department of Defense

Get information about TRICARE for Life and the TRICARE Pharmacy Program.

1-866-773-0404 (TFL)  
 TTY 1-866-773-0405  
 1-877-363-1303 (Pharmacy)  
 TTY 1-877-540-6261  
[tricare.mil/mybenefit](https://www.tricare.mil/mybenefit)

Definitions of [blue](#) words are on pages 145–148.

**Department of Health and Human Services****Office for Civil Rights**

If you think you were discriminated against or if your health information privacy rights were violated.

1-800-368-1019

TTY 1-800-537-7697

[hhs.gov/ocr](https://www.hhs.gov/ocr)

**Department of Veterans Affairs**

If you're a veteran or have served in the U.S. military.

1-800-827-1000

TTY 1-800-829-4833

[va.gov](https://www.va.gov)

**Office of Personnel Management**

Get information about the Federal Employee Health Benefits Program for current and retired federal employees.

1-888-767-6738

TTY 1-800-878-5707

[opm.gov/insure](https://www.opm.gov/insure)

**Railroad Retirement Board (RRB)**

If you have benefits from the RRB, call them to change your address or name, check eligibility, enroll in Medicare, replace your Medicare card, or report a death.

1-877-772-5772

TTY 1-312-751-4701

[rrb.gov](https://www.rrb.gov)

**Quality Improvement Organization (QIO)**

Ask questions or report complaints about the quality of care for a Medicare-covered service or if you think Medicare coverage for your service is ending too soon (for example, if your hospital says that you must be discharged and you disagree). Visit [Medicare.gov/contacts](https://www.Medicare.gov/contacts) or call 1-800-MEDICARE to get the phone number of your QIO.

Definitions  
of blue words  
are on pages  
145–148.

## Section 2—

# Signing Up for Medicare Part A & Part B

### Some people get Part A and Part B automatically

**If you're already getting benefits from Social Security or the Railroad Retirement Board (RRB),** you'll automatically get Part A and Part B starting the first day of the month you turn 65. (If your birthday is on the first day of the month, Part A and Part B will start the first day of the prior month.)

**If you're under 65 and disabled,** you'll automatically get Part A and Part B after you get disability benefits from Social Security for 24 months or certain disability benefits from the RRB for 24 months.

MEDICARE		HEALTH INSURANCE	
1-800-MEDICARE (1-800-633-4227)			
NAME OF BENEFICIARY <b>JANE DOE</b>			
MEDICARE CLAIM NUMBER <b>000-00-0000-A</b>	SEX <b>FEMALE</b>		
IS ENTITLED TO	EFFECTIVE DATE		
<b>HOSPITAL</b>	<b>(PART A)</b>	<b>07-01-1986</b>	
<b>MEDICAL</b>	<b>(PART B)</b>	<b>07-01-1986</b>	
SIGN HERE →	<i>Jane Doe</i>		

If you're automatically enrolled, you'll get your red, white, and blue Medicare card in the mail 3 months before your 65th birthday or 25th month of disability benefits. If you're going to wait to get Part B, follow the instructions that

come with the card, and send the card back. If you keep the card, you keep Part B and will pay Part B [premiums](#). See pages 22–23 for help deciding if you should wait to get Part B.

**If you have ALS (Amyotrophic Lateral Sclerosis, also called Lou Gehrig's disease),** you'll get Part A and Part B automatically the month your disability benefits begin.

## Some people have to sign up for Part A and/or Part B

**If you're close to 65, but not getting Social Security or Railroad Retirement Board (RRB) benefits and you want Part A and Part B, you'll need to sign up.** Contact Social Security 3 months before you turn 65. You can also apply for Part A and Part B at [socialsecurity.gov/retirement](https://www.socialsecurity.gov/retirement). If you worked for a railroad, contact the RRB.



**If you have End-Stage Renal Disease (ESRD), you'll need to sign up.** Contact Social Security to find out when and how to sign up for Part A and Part B. For more information, visit [Medicare.gov/publications](https://www.Medicare.gov/publications) to view the booklet “Medicare Coverage of Kidney Dialysis and Kidney Transplant Services.” You can also call 1-800-MEDICARE

(1-800-633-4227) to find out if a copy can be mailed to you. **TTY** users should call 1-877-486-2048.

### Important!

**If you live in Puerto Rico and get benefits from Social Security or the RRB, you'll automatically get Part A the first day of the month you turn 65 or after you get disability benefits for 24 months. However, if you want Part B, you'll need to sign up for it. If you don't sign up for Part B when you're first eligible, you may have to pay a late enrollment penalty for as long as you have Part B.** See page 28. Contact your local Social Security office or RRB for more information.

**Note:** To get Part A and/or Part B, you must be a U.S. citizen or lawfully present in the U.S.

### Where can I get more information?

Call Social Security at 1-800-772-1213 for more information about your Medicare eligibility and to sign up for Part A and/or Part B. If you worked for a railroad or get RRB benefits, call the RRB at 1-877-772-5772. TTY users should call 1-312-751-4701.

Definitions of **blue** words are on pages 145–148.

Visit [Medicare.gov](https://www.Medicare.gov) for general information about enrolling. You can also get personalized health insurance counseling at no cost to you from your State Health Insurance Assistance Program (SHIP). See pages 141–144 for the phone number.

## If I'm not automatically enrolled, when can I sign up?

If you want Part A and/or Part B, you can sign up during these times:

### Initial Enrollment Period



You can sign up for Part A and/or Part B during the 7-month period that begins 3 months before the month you turn 65, includes the month you turn 65, and ends 3 months after the month you turn 65.

If you sign up for Part A and/or Part B during the first 3 months of your Initial Enrollment Period, in most cases, your coverage starts the first day of your birthday month. However, if your birthday is on the first day of the month, your coverage will start the first day of the prior month.

If you enroll in Part A and/or Part B the month you turn 65 or during the last 3 months of your Initial Enrollment Period, the start date for your Medicare coverage will be delayed.

### General Enrollment Period

If you didn't sign up for Part A and/or Part B (for which you must pay [premiums](#)) when you were first eligible, you can sign up between January 1–March 31 each year. Your coverage will begin July 1 of that year. You may have to pay a higher Part A and/or Part B premium for late enrollment. See pages 26 and 28.

### Special Enrollment Period

If you didn't sign up for Part A and/or Part B when you were first eligible because you're covered under a group health plan based on current employment (your own, a spouse's, or a family member's if you're disabled), you can sign up for Part A and/or Part B:

- Anytime you're still covered by the group health plan
- During the 8-month period that begins the month after the employment ends or the coverage ends, whichever happens first

Remember, if you live in Puerto Rico, you don't automatically get Part B. You must call Social Security at 1-800-772-1213 to sign up for it. [TTY](#) users should call 1-800-325-0778.

Usually, you don't pay a late enrollment penalty if you sign up during a Special Enrollment Period. This Special Enrollment Period doesn't apply to people with End-Stage Renal Disease (ESRD). See page 20. You may also qualify for a Special Enrollment Period if you're a volunteer serving in a foreign country.

**Important!**

COBRA coverage and retiree health plans aren't considered coverage based on current employment. You're not eligible for a Special Enrollment Period when that coverage ends. To avoid paying a higher **premium**, make sure you sign up for Medicare when you're first eligible. See page 100 for more information about COBRA coverage.

To learn more details about enrollment periods, visit [Medicare.gov/publications](https://www.Medicare.gov/publications) to view the fact sheet "Enrolling in Medicare Part A & Part B." You can also call 1-800-MEDICARE (1-800-633-4227) to find out if a copy can be mailed to you. **TTY** users should call 1-877-486-2048.

## Should I get Part B?

The following information can help you decide.

**Employer or union coverage**—If you or your spouse (or family member if you're disabled) is still working and you have health coverage through that employer or union, contact your employer or union benefits administrator to find out how your coverage works with Medicare.

This includes federal or state employment, but not military service (unless on active duty). It may be to your advantage to delay Part B enrollment. You can sign up for Part B without paying a penalty any time you have health coverage based on current employment. COBRA and retiree health coverage don't count as current employer coverage. See page 24 to find out how your other insurance will work with Medicare.

Once the employment or coverage ends (whichever happens first), 3 things happen:

1. You have 8 months to sign up for Part B without a penalty. This period will run whether or not you choose COBRA. **If you choose COBRA, don't wait until your COBRA ends to enroll in Part B.** If you don't enroll in Part B during the 8 months after the employment ends, you may have to pay a penalty after you enroll for as long as you have Part B. You won't be able to enroll until the next General Enrollment Period, and you'll have to wait until July 1 of that year before your coverage begins. This may cause a gap in your health care coverage.

Definitions of **blue** words are on pages 145–148.

2. You may be able to get COBRA coverage, which continues your health insurance through the employer’s plan (in most cases for only 18 months) and probably at a higher cost to you.
  - If you already have COBRA coverage when you enroll in Medicare, your COBRA will probably end.
  - If you become eligible for COBRA coverage after you’re already enrolled in Medicare, you must be allowed to take the COBRA coverage. It will always be secondary to Medicare, unless you have End-Stage Renal Disease (ESRD).
3. When you sign up for Part B, your Medigap Open Enrollment Period begins. See below.

**TRICARE**—If you have Part A and TRICARE (insurance for active-duty military, military retirees, and their families), **you must have Part B to keep your TRICARE coverage.** However, if you’re an active-duty service member, or the spouse or dependent child of an active-duty service member:

- You don’t have to enroll in Part B to keep your TRICARE coverage while the service member is on active duty.
- Before the active-duty service member retires, you must enroll in Part B to keep TRICARE without a break in coverage.
- You can get Part B during a Special Enrollment Period if you have Medicare because you’re 65 or older, or you’re disabled.
- You should enroll in Part A and Part B when you’re first eligible based on ESRD.

### **When can I get a Medicare Supplement Insurance (Medigap) Policy?**

Medicare Supplement Insurance (Medigap) policies, sold by private insurance companies, help pay some of the health care costs that Medicare doesn’t cover. You have a one-time, 6-month Medigap Open Enrollment Period that starts the first month you’re 65 **and** enrolled in Part B. This period gives you a guaranteed right to buy any Medigap policy sold in your state regardless of your health status. In most cases, once this period starts, it can’t be delayed or restarted. See pages 67–71 for more information about Medigap.

## How does my other insurance work with Medicare?

When you have other insurance (like employer group health coverage), there are rules that decide whether Medicare or your other insurance pays first. Use this chart to see who pays first.

If you have <b>retiree</b> insurance (insurance from your or your spouse's former employment)...	Medicare pays first.
If you're 65 or older, have group health plan coverage based on your or your spouse's <b>current</b> employment, and the employer has <b>20 or more employees</b> ...	Your group health plan pays first.
If you're 65 or older, have group health plan coverage based on your or your spouse's <b>current</b> employment, and the employer has <b>less than 20 employees</b> ...	Medicare pays first.
If you're under 65 and disabled, have group health plan coverage based on your or a family member's <b>current</b> employment, and the employer has <b>100 or more employees</b> ...	Your group health plan pays first.
If you're under 65 and disabled, have group health plan coverage based on your or a family member's <b>current</b> employment, and the employer has <b>less than 100 employees</b> ...	Medicare pays first.
If you have Medicare because of End-Stage Renal Disease (ESRD)...	Your group health plan will pay first for the first 30 months after you become eligible to enroll in Medicare. Medicare will pay first after this 30-month period.

Definitions of blue words are on pages 145–148.

**Note:** In some cases, your employer may join with other employers or unions to form a multiple-employer plan. If this happens, the size of the largest employer/union determines whether Medicare pays first or second.



**Here are some important facts to remember:**

- The insurance that pays first (primary payer) pays up to the limits of its coverage.
- The insurance that pays second (secondary payer) only pays if there are costs the primary insurer didn't cover.
- The secondary payer (which may be Medicare) may not pay all of the uncovered costs.
- If your employer insurance is the secondary payer, you may need to enroll in Part B before your insurance will pay.

Medicare may pay second if you're in an accident or have a workers' compensation case in which other insurance covers your injury or you're suing another individual or entity for medical expenses. In these situations, you or your lawyer should tell Medicare as soon as possible. These types of insurance usually pay first:

- No-fault insurance (including automobile insurance)
- Liability insurance (including automobile and self-insurance)
- Black lung benefits
- Workers' compensation

**Note:** Medicare may pay conditionally if the no-fault, liability, or workers' compensation insurance hasn't settled on the claim.

**Medicaid and TRICARE never pay first for services that are covered by Medicare.** They only pay after Medicare, employer group health plans, and/or Medicare Supplement Insurance have paid.

For more information, visit [Medicare.gov/publications](https://www.Medicare.gov/publications) to view the booklet "Medicare and Other Health Benefits: Your Guide to Who Pays First." You can also call 1-800-MEDICARE (1-800-633-4227) to find out if a copy can be mailed to you. TTY users should call 1-877-486-2048.

**Important!**

If you have other insurance, be sure to tell your health care provider, hospital, and pharmacy. If you have questions about who pays first, or you need to update your other insurance information, call Medicare's Coordination of Benefits Contractor at 1-800-999-1118. TTY users should call 1-800-318-8782. You can also contact your employer or union benefits administrator. You may need to give your Medicare number to your other insurers so your bills are paid correctly and on time.

## How much does Part A coverage cost?

You usually don't pay a monthly **premium** for Part A coverage if you or your spouse paid Medicare taxes while working. This is sometimes called premium-free Part A.

If you aren't eligible for premium-free Part A, you may be able to buy Part A if:

- You're 65 or older, and you have (or are enrolling in) Part B and meet the citizenship and residency requirements.
- You're under 65, disabled, and your premium-free Part A coverage ended because you returned to work. (If you're under 65 and disabled, you can continue to get premium-free Part A for up to 8 1/2 years after you return to work.)



**Note:** In 2013, people who had to buy Part A paid up to \$441 each month. Visit [Medicare.gov](http://Medicare.gov), or call 1-800-MEDICARE (1-800-633-4227) to find out the amount for 2014. **TTY** users should call 1-877-486-2048. In most cases, if you choose to **buy** Part A, you must also have Part B and pay monthly premiums for both. If you have limited income and resources, your state may help you pay for Part A and/or Part B. See pages 108–109. Call Social Security at 1-800-772-1213 for more information about the Part A premium. **TTY** users should call 1-800-325-0778.

## What's the Part A late enrollment penalty?

If you aren't eligible for premium-free Part A, and you don't buy it when you're first eligible, your monthly premium may go up 10%. You'll have to pay the higher premium for twice the number of years you could have had Part A, but didn't sign up.

Definitions of **blue** words are on pages 145–148.

**Example:** If you were eligible for Part A for 2 years but didn't sign up, you'll have to pay the higher premium for 4 years. Usually, you don't have to pay a penalty if you meet certain conditions that allow you to sign up for Part A during a Special Enrollment Period. See pages 21–22.

## How much does Part B coverage cost?

You pay the Part B **premium** each month. Most people will pay the standard premium amount, which was \$104.90 in 2013.

### Some people may pay a higher Part B premium

If your modified adjusted gross income as reported on your IRS tax return from 2 years ago (the most recent tax return information provided to Social Security by the IRS) is above a certain amount, you may pay more. This doesn't affect everyone, so most people won't have to pay a higher amount.

Your modified adjusted gross income is your adjusted gross income plus your tax exempt interest income. Each year, Social Security will notify you if you have to pay more than the standard premium. The amount you pay can change each year depending on your income. If you have to pay a higher amount for your Part B premium and you disagree (for example, if your income goes down), call Social Security at 1-800-772-1213. **TTY** users should call 1-800-325-0778. If you get benefits from RRB, you should also contact Social Security. RRB doesn't make income determinations.

For more information, visit [socialsecurity.gov/pubs/10536.pdf](http://socialsecurity.gov/pubs/10536.pdf) to view the fact sheet “Medicare Premiums: Rules for Higher-Income Beneficiaries.”

Visit [Medicare.gov](http://Medicare.gov), or call 1-800-MEDICARE (1-800-633-4227) to find out the Part B premium amounts for 2014. **TTY** users should call 1-877-486-2048.

### What's the Part B late enrollment penalty?

If you don't sign up for Part B when you're first eligible, you may have to pay a late enrollment penalty for as long as you have Part B. Your monthly **premium** for Part B may go up 10% for each full 12-month period that you could have had Part B, but didn't sign up for it. Usually, you don't pay a late enrollment penalty if you meet certain conditions that allow you to sign up for Part B during a Special Enrollment Period. See pages 21–22.

**Example:** Mr. Smith's Initial Enrollment Period ended September 30, 2010. He waited to sign up for Part B until March 2013 during the General Enrollment Period. His Part B premium penalty is 20%. (While Mr. Smith waited a total of 30 months to sign up, this included only 2 full 12-month periods.)

**If you have limited income and resources, see pages 108–109 for information about help paying your Medicare premiums.**

### How can I pay my Part B premium?

If you get Social Security, RRB, or Office of Personnel Management (OPM) benefits, your Part B premium will be automatically deducted from your benefit payment. If you don't get these benefit payments and choose to sign up for Part B, you'll get a bill. If you choose to buy Part A, you'll always get a bill for your premium.

You can mail your premium payments to:

Medicare Premium Collection Center  
P.O. Box 790355  
St. Louis, Missouri 63179-0355

If you get a bill from the RRB, mail your premium payments to:

RRB  
Medicare Premium Payments  
P.O. Box 979024  
St. Louis, Missouri 63197-9000

If you have questions about your premiums, call Social Security at 1-800-772-1213. **TTY** users should call 1-800-325-0778.

Definitions  
of **blue** words  
are on pages  
145–148.

## Section 3—

# Find Out if Medicare Covers Your Test, Service, or Item

### What services does Medicare cover?

Medicare covers certain medical services and supplies in hospitals, doctors' offices, and other health care settings. Services are either covered under Part A or Part B.

If you have both Part A and Part B, you can get all of the Medicare-covered services listed in this section, whether you have Original Medicare or a [Medicare health plan](#).

#### Important!

To get Medicare-covered Part A and/or Part B services, you must be a U.S. citizen or be lawfully present in the U.S.

### What does Part A cover?

Part A (Hospital Insurance) helps cover:

- Inpatient care in hospitals
- Inpatient care in a skilled nursing facility (not [custodial](#) or [long-term care](#))
- Hospice care services
- Home health care services
- Inpatient care in a religious nonmedical health care [institution](#)

You can find out if you have Part A by looking at your Medicare card. If you have Original Medicare, you'll use this card to get your Medicare-covered services. If you join a Medicare health plan, in most cases, you must use the card from the plan to get your Medicare-covered services.

## What do I pay for Part A-covered services?

Copayments, coinsurance, or deductibles may apply for each service listed in the following chart. Visit Medicare.gov, or call 1-800-MEDICARE (1-800-633-4227) to get specific cost information. TTY users should call 1-877-486-2048.

If you're in a Medicare health plan or have other insurance (like a Medicare Supplement Insurance (Medigap) policy, or employer or union coverage), your costs may be different. Contact the plans you're interested in to find out about the costs, or visit the Medicare Plan Finder at Medicare.gov/find-a-plan.

## Part A-covered services

### Blood

If the hospital gets blood from a blood bank at no charge, you won't have to pay for it or replace it. If the hospital has to buy blood for you, you must either pay the hospital costs for the first 3 units of blood you get in a calendar year or have the blood donated by you or someone else.

### Home health services

Medicare covers medically necessary part-time or intermittent skilled nursing care, and/or physical therapy, speech-language pathology services, and/or services for people with a continuing need for occupational therapy. A doctor, or certain health care providers who work with a doctor, must see you face-to-face before a doctor can certify that you need home health services. A doctor must order your care and a Medicare-certified home health agency must provide it. Home health services may also include medical social services, part-time or intermittent home health aide services, and medical supplies for use at home. You must be homebound, which means both of these are true:

1. You're normally unable to leave home and doing so requires a considerable and taxing effort.
2. Because of an illness or injury, leaving home isn't medically advisable or isn't possible without the aid of supportive devices, use of special transportation, or the assistance of another person.

Definitions of blue words are on pages 145–148.

You pay nothing for covered home health care services and 20% of the Medicare-approved amount for durable medical equipment. See pages 41–42.

## Hospice care

To qualify for hospice care, a hospice doctor and your doctor must certify that you're terminally ill and expected to live 6 months or less. If you're already getting hospice care, a hospice doctor or nurse practitioner will need to see you about 6 months after you enter hospice to certify that you're still terminally ill. Coverage includes:

- All items and services needed for pain relief and symptom management
- Medical, nursing, and social services
- Drugs
- Certain durable medical equipment
- Other covered services, as well as services Medicare usually doesn't cover, like spiritual and grief counseling

A Medicare-approved hospice usually gives hospice care in your home or other facility where you live, like a nursing home.

Hospice care doesn't pay for your stay in a facility (room and board) unless the hospice medical team determines that you need short-term inpatient stays for pain and symptom management that can't be addressed at home. These stays must be in a Medicare-approved facility, like a hospice facility, hospital, or skilled nursing facility that contracts with the hospice. Medicare also covers inpatient respite care which is care you get in a Medicare-approved facility so that your usual caregiver can rest. You can stay up to 5 days each time you get respite care. Medicare will pay for covered services for health problems that aren't related to your terminal illness. You can continue to get hospice care as long as the hospice medical director or hospice doctor recertifies that you're terminally ill.

- You pay nothing for hospice care.
- You pay a [copayment](#) of up to \$5 per prescription for outpatient prescription drugs for pain and symptom management.
- You pay 5% of the [Medicare-approved amount](#) for inpatient respite care.

## Hospital care (inpatient)

Medicare covers semi-private rooms, meals, general nursing, and drugs as part of your inpatient treatment, and other hospital services and supplies. This includes care you get in acute care hospitals, [critical access hospitals](#), [inpatient rehabilitation facilities](#), [long-term care hospitals](#), inpatient care as part of a qualifying clinical research study, and mental health care. This doesn't include private-duty nursing, a television or phone in your room (if there's a separate charge for these items), or personal care items, like razors or slipper socks. It also doesn't include a private room, unless [medically necessary](#). If you have Part B, it covers the doctor's services you get while you're in a hospital.

- You pay a [deductible](#) and no [coinsurance](#) for days 1–60 of each [benefit period](#).
- You pay coinsurance for days 61–90 of each benefit period.
- You pay coinsurance per “[lifetime reserve day](#)” after day 90 of each benefit period (up to 60 days over your lifetime).
- You pay all costs for each day after you use all of your lifetime reserve days.
- Inpatient psychiatric care in a freestanding psychiatric hospital is limited to 190 days in a lifetime.

### Important!

Staying overnight in a hospital doesn't always mean you're an inpatient. You only become an inpatient when a hospital formally admits you as an inpatient, after a doctor orders it. You're still an outpatient if you've not been formally admitted as an inpatient, even if you're getting emergency department services, observation services, outpatient surgery, lab tests, or X-rays. You or a family member should always ask if you're an inpatient or an outpatient each day during your stay, since it affects what you pay and whether you'll qualify for Part A coverage in a skilled nursing facility.

For more information, visit [Medicare.gov/publications](https://www.medicare.gov/publications) to view the fact sheet “Are You a Hospital Inpatient or Outpatient? If You Have Medicare—Ask!” You can also call 1-800-MEDICARE (1-800-633-4227) to find out if a copy can be mailed to you. [TTY](#) users should call 1-877-486-2048.

Definitions of [blue](#) words are on pages 145–148.



## Religious non-medical health care institution (inpatient care)

In these facilities, religious beliefs prohibit conventional and unconventional medical care. If you qualify for hospital or [skilled nursing facility care](#), Medicare will only cover the inpatient, non-religious, non-medical items and services. An example is room and board, or any items and services that don't require a doctor's order or prescription, like unmedicated wound dressings or use of a simple walker.

## Skilled nursing facility care

Medicare covers semi-private rooms, meals, skilled nursing and rehabilitative services, and other [medically necessary](#) services



and supplies after a 3-day minimum medically necessary inpatient hospital stay for a related illness or injury. An inpatient hospital stay begins the day you're formally admitted with a doctor's order and doesn't include the day you're discharged. To qualify for care in a skilled nursing facility, your doctor must certify that

you need daily skilled care like intravenous injections or physical therapy. Medicare doesn't cover [long-term care](#) or [custodial care](#).

- You pay nothing for the first 20 days of each [benefit period](#).
- You pay a [coinsurance](#) per day for days 21–100 of each benefit period.
- You pay all costs for each day after day 100 in a benefit period.

**Note:** Visit [Medicare.gov](http://Medicare.gov), or call 1-800-MEDICARE (1-800-633-4227) to find out what you pay for inpatient hospital stays and skilled nursing facility care in 2014. [TTY](#) users should call 1-877-486-2048.

## What does Part B cover?

Medicare Part B (Medical Insurance) helps cover **medically necessary** doctors' services, outpatient care, home health services, durable medical equipment, and other medical services. Part B also covers many **preventive services**. You can find out if you have Part B by looking at your Medicare card. See pages 35–54 for a list of common Part B-covered services and general descriptions. Medicare may cover some services and tests more often than the timeframes listed if needed to diagnose a condition. To find out if Medicare covers a service not on this list, visit [Medicare.gov/coverage](https://www.Medicare.gov/coverage), or call 1-800-MEDICARE (1-800-633-4227). **TTY** users should call 1-877-486-2048. For more details about Medicare-covered services, visit [Medicare.gov/publications](https://www.Medicare.gov/publications) to view the booklet “Your Medicare Benefits.” Call 1-800-MEDICARE to find out if a copy can be mailed to you.

## What do I pay for Part B-covered services?

The alphabetical list on the following pages gives general information about what you pay if you have Original Medicare and see doctors or other health care providers who accept **assignment**. You'll pay more if you see doctors or providers who don't accept assignment. **If you're in a Medicare Advantage Plan (like an HMO or PPO) or have other insurance, your costs may be different. Contact your plan or benefits administrator directly to find out about the costs.**

Definitions of **blue** words are on pages 145–148.

Under Original Medicare, if the Part B **deductible** applies, you must pay all costs (up to the **Medicare-approved amount**) until you meet the yearly Part B deductible before Medicare begins to pay its share. Then, after your deductible is met, you typically pay 20% of the Medicare-approved amount of the service, if the doctor or other health care provider accepts assignment. There's no yearly limit for what you pay out-of-pocket. Visit [Medicare.gov](https://www.Medicare.gov), or call 1-800-MEDICARE to get specific cost information.

You pay nothing for most covered preventive services if you get the services from a doctor or other qualified health care provider who accepts assignment. However, for some preventive services, you may have to pay a deductible, **coinsurance**, or both.

### Important!

See pages 64–67 for more information about assignment.

## Part B-covered services



You'll see this apple next to the [preventive services](#) on pages 35–54. Use the preventive services checklist on page 55 to ask your doctor or other health care provider which preventive services you should get.



### **Abdominal aortic aneurysm screening**

Medicare covers a one-time screening abdominal aortic aneurysm ultrasound for people at risk. You must get a [referral](#) for it as part of your one-time “Welcome to Medicare” preventive visit. See page 53. You pay nothing for the screening if the doctor or other qualified health care provider accepts [assignment](#).

**Note:** If you have a family history of abdominal aortic aneurysms, or you're a man 65 to 75 and you have smoked at least 100 cigarettes in your lifetime, you're considered at risk.



### **Alcohol misuse screening and counseling**

Medicare covers one alcohol misuse screening per year for adults with Medicare (including pregnant women) who use alcohol, but don't meet the medical criteria for alcohol dependency. If your [primary care doctor](#) or other [primary care practitioner](#) determines you're misusing alcohol, you can get up to 4 brief face-to-face counseling sessions per year (if you're competent and alert during counseling). A qualified primary care doctor or other primary care practitioner must provide the counseling in a primary care setting (like a doctor's office). You pay nothing if the qualified primary care doctor or other primary care practitioner accepts assignment.



= Preventive service

### Ambulance services

Medicare covers ground ambulance transportation when you need to be transported to a hospital, [critical access hospital](#), or skilled nursing facility for [medically necessary](#) services, and transportation in any other vehicle could endanger your health. Medicare may pay for emergency ambulance transportation in an airplane or helicopter to a hospital if you need immediate and rapid ambulance transportation that ground transportation can't provide. In some cases, Medicare may pay for limited non-emergency ambulance transportation if you have a written order from your doctor stating that ambulance transportation is necessary due to your medical condition. Medicare will only cover ambulance services to the nearest appropriate medical facility that's able to give you the care you need. You pay 20% of the [Medicare-approved amount](#), and the Part B [deductible](#) applies.

### Ambulatory surgical centers

Medicare covers the facility services fees related to approved surgical procedures in an ambulatory surgical center (facility where surgical procedures are performed, and the patient is expected to be released within 24 hours). Except for certain [preventive services](#) (for which you pay nothing), you pay 20% of the Medicare-approved amount to both the ambulatory surgical center and the doctor who treats you, and the Part B deductible applies. You pay for all of the facility service fees for procedures Medicare doesn't cover in ambulatory surgical centers.

### Blood

If the provider gets blood from a blood bank at no charge, you won't have to pay for it or replace it. However, you'll pay a [copayment](#) for the blood processing and handling services for each unit of blood you get, and the Part B deductible applies. If the provider has to buy blood for you, you must either pay the provider costs for the first 3 units of blood you get in a calendar year or have the blood donated by you or someone else.

Definitions  
of [blue](#) words  
are on pages  
145–148.



### **Bone mass measurement (bone density)**

This test helps to see if you're at risk for broken bones. It's covered once every 24 months (more often if **medically necessary**) for people who have certain medical conditions or meet certain criteria. You pay nothing for this test if the doctor or other qualified health care provider accepts **assignment**.



### **Breast cancer screening (mammograms)**

Medicare covers screening mammograms to check for breast cancer once every 12 months for all women with Medicare who are 40 and older. Medicare covers one baseline mammogram for women between 35–39. You pay nothing for the test if the doctor or other qualified health care provider accepts assignment.

### **Cardiac rehabilitation**

Medicare covers comprehensive programs that include exercise, education, and counseling for patients who meet certain conditions. Medicare also covers intensive cardiac rehabilitation programs that are typically more rigorous or more intense than regular cardiac rehabilitation programs. Services are covered in a doctor's office or hospital outpatient setting. You pay 20% of the **Medicare-approved amount** if you get the services in a doctor's office. In a hospital outpatient setting, you also pay the hospital a **copayment**. The Part B **deductible** applies.



### **Cardiovascular disease (behavioral therapy)**

Medicare will cover one visit per year with a **primary care doctor** in a primary care setting (like a doctor's office) to help lower your risk for cardiovascular disease. During this visit, the doctor may discuss aspirin use (if appropriate), check your blood pressure, and give you tips to make sure you're eating well. You pay nothing if the doctor or other qualified health care provider accepts assignment.



= Preventive service



### Cardiovascular disease screenings

These screenings include blood tests that help detect conditions that may lead to a heart attack or stroke. Medicare covers these screening tests once every 5 years to test your cholesterol, lipid, lipoprotein, and triglyceride levels. You pay nothing for the tests, but you generally have to pay 20% of the Medicare-approved amount for the doctor's visit and the Part B deductible may apply.



### Cervical and vaginal cancer screening

Medicare covers Pap tests and pelvic exams to check for cervical and vaginal cancers. As part of the exam, Medicare also covers a clinical breast exam to check for breast cancer. Medicare covers these screening tests once every 24 months. Medicare covers these screening tests once every 12 months if you're at high risk for cervical or vaginal cancer or if you're of child-bearing age and had an abnormal Pap test in the past 36 months. You pay nothing if the doctor or other qualified health care provider accepts assignment.

### Chemotherapy

Medicare covers chemotherapy in a doctor's office, freestanding clinic, or hospital outpatient setting for people with cancer. For chemotherapy given in a doctor's office or freestanding clinic, you pay 20% of the Medicare-approved amount. If you get chemotherapy in a hospital outpatient setting, you pay a copayment for the treatment. For chemotherapy in a hospital inpatient setting covered under Part A, see Hospital care (inpatient) on page 32.

### Chiropractic services (limited coverage)

Medicare covers these services to help correct a subluxation (when one or more of the bones of your spine move out of position) using manipulation of the spine. You pay 20% of the Medicare-approved amount, and the Part B deductible applies.

**Note:** You pay all costs for any other services or tests ordered by a chiropractor (including X-rays and massage therapy).

Definitions of blue words are on pages 145–148.



= Preventive service

## Clinical research studies

Clinical research studies test how well different types of medical care work and if they're safe. Medicare covers some costs, like office visits and tests, in qualifying clinical research studies. You may pay 20% of the [Medicare-approved amount](#), and the Part B [deductible](#) may apply.

**Note:** If you're in a Medicare Advantage Plan (like an HMO or PPO), some costs may be covered by Medicare and some may be covered by your plan.



## Colorectal cancer screenings

Medicare covers these screenings to help find precancerous growths or find cancer early, when treatment is most effective.

One or more of these tests may be covered:

- **Screening fecal occult blood test**—This test is covered once every 12 months if you're 50 or older. You pay nothing for the test if the doctor or other qualified health care provider accepts [assignment](#).
- **Screening flexible sigmoidoscopy**—This test is generally covered once every 48 months if you're 50 or older, or 120 months after a previous screening colonoscopy for those not at high risk. You pay nothing for the test if the doctor or other qualified health care provider accepts assignment.
- **Screening colonoscopy**—This test is generally covered once every 120 months (high risk every 24 months) or 48 months after a previous flexible sigmoidoscopy. There's no minimum age. You pay nothing for the test if the doctor or other qualified health care provider accepts assignment.

**Note:** If a polyp or other tissue is found and removed during the colonoscopy, you may have to pay 20% of the Medicare-approved amount for the doctor's services and a [copayment](#) in a hospital outpatient setting.

- **Screening barium enema**—This test is generally covered once every 48 months if you're 50 or older (high risk every 24 months) when used instead of a sigmoidoscopy or colonoscopy. You pay 20% of the Medicare-approved amount for the doctor services. In a hospital outpatient setting, you also pay the hospital a copayment.



= Preventive service

### Defibrillator (implantable automatic)

Medicare covers these devices for some people diagnosed with heart failure. If the surgery takes place in an outpatient setting, you pay 20% of the **Medicare-approved amount** for the doctor's services. If you get the device as a hospital outpatient, you also pay the hospital a **copayment**. In most cases, the copayment amount can't be more than the Part A hospital stay deductible. The Part B **deductible** applies. Surgeries to implant defibrillators in a hospital inpatient setting are covered under Part A. See Hospital care (inpatient) on page 32.



### Depression screening

Medicare covers one depression screening per year. The screening must be done in a primary care setting (like a doctor's office) that can provide follow-up treatment and **referrals**. You pay nothing for this test if the doctor or other qualified health care provider accepts **assignment**. If you get the depression screening and another service, you may need to pay 20% of the Medicare-approved amount for the other service and the Part B deductible may apply.



### Diabetes screenings

Medicare covers these screenings if your doctor determines you're at risk for diabetes. You may be eligible for up to 2 diabetes screenings each year. You pay nothing for the test if your doctor or other qualified health care provider accepts assignment.



### Diabetes self-management training

Medicare covers diabetes outpatient self-management training to teach you to cope with and manage your diabetes. The program may include tips for eating healthy, being active, monitoring blood sugar, taking medication, and reducing risks. You must have diabetes and a written order from your doctor or other health care provider. You pay 20% of the Medicare-approved amount, and the Part B deductible applies.

Definitions  
of **blue** words  
are on pages  
145–148.



= Preventive service



## Diabetes supplies

Medicare covers blood sugar testing monitors, blood sugar test strips, lancet devices and lancets, blood sugar control solutions, and therapeutic shoes (in some cases). Medicare only covers insulin if it's **medically necessary** to use with an external insulin pump to administer the insulin. You pay 20% of the **Medicare-approved amount**, and the Part B **deductible** applies.

**Note:** Medicare prescription drug coverage (Part D) may cover insulin, certain medical supplies used to inject insulin (like syringes), and some oral diabetic drugs. Check with your plan for more information.

### Important!

If you get your diabetic testing supplies by mail, you'll need to use a national mail-order program Medicare contract supplier for Medicare to pay. You can also get your supplies at a store, but you should check if your payment will be more. Visit [Medicare.gov/supplier](https://www.Medicare.gov/supplier) to find a contract supplier.

## Doctor and other health care provider services

Medicare covers medically necessary doctor services (including outpatient services and some doctor services you get when you're a hospital inpatient) and covered **preventive services**. Medicare also covers services provided by other health care providers, like physician assistants, nurse practitioners, social workers, physical therapists, and psychologists. Except for certain preventive services (for which you may pay nothing), you pay 20% of the Medicare-approved amount, and the Part B deductible applies.

## Durable medical equipment (like walkers)

Medicare covers items like oxygen equipment and supplies, wheelchairs, walkers, and hospital beds ordered by a doctor or other health care provider enrolled in Medicare for use in the home. Some items must be rented. You pay 20% of the Medicare-approved amount, and the Part B deductible applies. **In all areas of the country, you must get your covered equipment or supplies and replacement or repair services from a Medicare-approved supplier for Medicare to pay.**

For more information, visit [Medicare.gov/publications](https://www.Medicare.gov/publications) to view the booklet "Medicare Coverage of Durable Medical Equipment and Other Devices." You can also call 1-800-MEDICARE (1-800-633-4227) to find out if a copy can be mailed to you. **TTY** users should call 1-877-486-2048.

**Durable Medical Equipment, Prosthetics, Orthotics, and Supplies (DMEPOS) Competitive Bidding Program:** To get certain items in some areas of the country, you generally must use specific suppliers called “contract suppliers,” or Medicare won’t pay for the item and you likely will pay full price. Visit [Medicare.gov/supplier](https://www.medicare.gov/supplier) to find Medicare-approved suppliers in your area. If your ZIP code is in a competitive bidding area, the items included in the program are marked with an orange star. You can also call 1-800-MEDICARE (1-800-633-4227). **TTY** users should call 1-877-486-2048.

### **EKG (electrocardiogram) screening**

Medicare covers a one-time screening EKG if referred by your doctor or other health care provider as part of your one-time “Welcome to Medicare” preventive visit. See page 53. You pay 20% of the [Medicare-approved amount](#), and the Part B [deductible](#) applies. An EKG is also covered as a diagnostic test. See page 51. If you have the test at a hospital or a hospital-owned clinic, you also pay the hospital a [copayment](#).

### **Emergency department services**

These services are covered when you have an injury, a sudden illness, or an illness that quickly gets much worse. You pay a specified copayment for the hospital emergency department visit, and you pay 20% of the Medicare-approved amount for the doctor’s or other health care provider’s services. The Part B deductible applies. However, your costs may be different if you’re admitted to the hospital.

### **Eyeglasses (limited)**

Medicare covers one pair of eyeglasses with standard frames (or one set of contact lenses) after cataract surgery that implants an intraocular lens. You pay 20% of the Medicare-approved amount, and the Part B deductible applies. **Note:** Medicare will only pay for contact lenses or eyeglasses from a supplier enrolled in Medicare.

## Federally-qualified health center services

Medicare covers many outpatient primary care and [preventive services](#) you get through certain community health centers. Generally, you're responsible for paying a federally-qualified health center 20% of its reasonable costs, but these health centers must offer you a discounted rate if your income is under a certain amount (this amount changes, so check with the health center). The Part B [deductible](#) doesn't apply. You pay nothing for most preventive services. To find a Medicare participating, federally-qualified health center near you, visit [hrsa.gov](https://www.hrsa.gov).



### Flu shots

Medicare generally covers one flu shot per flu season. You pay nothing for the flu shot if the doctor or other qualified health care provider accepts [assignment](#) for giving the shot.

### Foot exams and treatment

Medicare covers foot exams and treatment if you have diabetes-related nerve damage and/or meet certain conditions. You pay 20% of the [Medicare-approved amount](#), and the Part B deductible applies. In a hospital outpatient setting, you also pay the hospital a [copayment](#).



### Glaucoma tests

These tests are covered once every 12 months for people at high risk for the eye disease glaucoma. You're at high risk if you have diabetes, a family history of glaucoma, are African-American and 50 or older, or are Hispanic and 65 or older. An eye doctor who is legally allowed by the state must do the tests. You pay 20% of the Medicare-approved amount, and the Part B deductible applies. In a hospital outpatient setting, you also pay the hospital a copayment.

### Hearing and balance exams

Medicare covers these exams if your doctor or other health care provider orders them to see if you need medical treatment. You pay 20% of the Medicare-approved amount, and the Part B deductible applies. In a hospital outpatient setting, you also pay the hospital a copayment.

**Note:** Original Medicare doesn't cover hearing aids or exams for fitting hearing aids.



= Preventive service



### Hepatitis B shots

Medicare covers these shots for people at medium or high risk for Hepatitis B. Some risk factors include hemophilia, End-Stage Renal Disease (ESRD), diabetes, if you live with someone who has Hepatitis B, or if you're a health care worker and have frequent contact with blood or body fluids. Check with your doctor to see if you're at medium or high risk for Hepatitis B. You pay nothing for getting the shot if the doctor or other qualified health care provider accepts [assignment](#).



### HIV screening

Medicare covers HIV (Human Immunodeficiency Virus) screenings once per year for people at increased risk for HIV, including anyone who asks for the test. Medicare also covers HIV screenings for pregnant women up to 3 times during a pregnancy. You pay nothing for the HIV screening if the doctor or other qualified health care provider accepts assignment.

### Home health services

Medicare covers [medically necessary](#) part-time or intermittent skilled nursing care, and/or physical therapy, speech-language pathology services, and/or services for people with a continuing need for occupational therapy. A doctor, or certain health care providers who work with a doctor, must see you face-to-face before a doctor can certify that you need home health services. A doctor must order your care, and a Medicare-certified home health agency must provide it.

Home health services may also include medical social services, part-time or intermittent home health aide services, durable medical equipment, and medical supplies for use at home. You must be homebound, which means both of these are true:

1. You're normally unable to leave home and doing so requires a considerable and taxing effort.
2. Because of an illness or injury, leaving home isn't medically advisable or isn't possible without the aid of supportive devices, use of special transportation, or the assistance of another person.

You pay nothing for covered home health services. For Medicare-covered durable medical equipment information, see pages 41–42.

Definitions of [blue](#) words are on pages 145–148.



= Preventive service

### **Kidney dialysis services and supplies**

Generally, Medicare covers 3 dialysis treatments per week if you have End-Stage Renal Disease (ESRD). This includes all ESRD-related drugs and biologicals, laboratory tests, home dialysis training, support services, equipment, and supplies. The dialysis facility is responsible for coordinating your dialysis services (at home or in a facility). You pay 20% of the [Medicare-approved amount](#), and the Part B [deductible](#) applies.

### **Kidney disease education services**

Medicare covers up to 6 sessions of kidney disease education services if you have Stage IV chronic kidney disease, and your doctor or other health care provider refers you for the service. You pay 20% of the Medicare-approved amount, and the Part B deductible applies.

### **Laboratory services**

Medicare covers laboratory services including certain blood tests, urinalysis, and some screening tests. You generally pay nothing for these services.



### **Medical nutrition therapy services**

Medicare may cover medical nutrition therapy and certain related services if you have diabetes or kidney disease, or you have had a kidney transplant in the last 36 months, and your doctor or other health care provider refers you for the service. You pay nothing for these services if the doctor or other qualified health care provider accepts [assignment](#).

### Mental health care (outpatient)

Medicare covers mental health care services to help with conditions like depression or anxiety. Coverage includes services generally provided in an outpatient setting (like a doctor's or other health care provider's office or hospital outpatient department), including visits with a psychiatrist or other doctor, clinical psychologist, nurse practitioner, physician assistant, clinical nurse specialist, or clinical social worker. Lab tests are also covered. Certain limits and conditions apply.

Generally, you pay 20% of the [Medicare-approved amount](#) and the Part B [deductible](#) applies for:

- Visits to a doctor or other health care provider to diagnose your condition or monitor or change your prescriptions
- Outpatient treatment of your condition (like counseling or psychotherapy)

**Note:** Inpatient mental health care is covered under Part A. See Hospital care (inpatient) on page 32.



### Obesity screening and counseling

If you have a body mass index (BMI) of 30 or more, Medicare may cover up to 22 face-to-face intensive counseling sessions over a 12-month period to help you lose weight. This counseling is covered when provided in a primary care setting (like a doctor's office). Talk to your [primary care doctor](#) or [primary care practitioner](#) to find out more. You pay nothing for this service if the primary care doctor or other qualified primary care practitioner accepts [assignment](#).

## Occupational therapy

Medicare covers evaluation and treatment to help you perform activities of daily living (like dressing or bathing) after an illness or accident when your doctor or other health care provider certifies you need it. There may be a limit on the amount Medicare will pay for these services in a single year and there may be certain exceptions to these limits. You pay 20% of the [Medicare-approved amount](#), and the Part B [deductible](#) applies.

## Outpatient hospital services

Medicare covers many diagnostic and treatment services in participating hospital outpatient departments. Generally, you pay 20% of the Medicare-approved amount for the doctor's or other health care provider's services. You may pay more for services you get in a hospital outpatient setting than you'll pay for the same care in a doctor's office. In addition to the amount you pay the doctor, you'll usually pay the hospital a [copayment](#) for each service you get in a hospital outpatient setting, except for certain [preventive services](#) that don't have a copayment. In most cases the copayment can't be more than the Part A hospital stay deductible for each service. The Part B deductible applies, except for certain preventive services.

## Outpatient medical and surgical services and supplies

Medicare covers approved procedures like X-rays, casts, or stitches. You pay 20% of the Medicare-approved amount for the doctor's or other health care provider's services. You generally pay the hospital a copayment for each service you get in a hospital outpatient setting. In most cases, for each service provided, the copayment can't be more than the Part A hospital stay deductible. The Part B deductible applies, and you pay all charges for items or services that Medicare doesn't cover.

Definitions  
of [blue](#) words  
are on pages  
145–148.

## Physical therapy

Medicare covers evaluation and treatment for injuries and diseases that change your ability to function when your doctor or other health care provider certifies your need for it. There may be a limit on the amount Medicare will pay for these services in a single year and there may be certain exceptions to these limits. You pay 20% of the Medicare-approved amount, and the Part B deductible applies.



## Pneumococcal shot

Medicare covers pneumococcal shots to help prevent pneumococcal infections (like certain types of pneumonia). Most people only need this shot once in their lifetime. Talk with your doctor or other health care provider to see if you should get this shot. You pay nothing for getting the shot if the doctor or other qualified health care provider accepts assignment for giving the shot.

## Prescription drugs (limited)

Medicare covers a limited number of drugs like injections you get in a doctor's office, certain oral anti-cancer drugs, drugs used with some types of durable medical equipment (like a nebulizer or external infusion pump), and under very limited circumstances, certain drugs you get in a hospital outpatient setting. You pay 20% of the Medicare-approved amount for these covered drugs, and the Part B deductible applies.

If the covered drugs you get in a hospital outpatient setting are part of your outpatient services, you pay the copayment for the services. However, other types of drugs in a hospital outpatient setting (sometimes called “self-administered drugs” or drugs you would normally take on your own), aren't covered by Part B. What you pay depends on whether you have Part D or other prescription drug coverage, whether your drug plan covers the drug, and whether the hospital's pharmacy is in your drug plan's network. Contact your prescription drug plan to find out what you pay for drugs you get in a hospital outpatient setting that aren't covered under Part B. See page 97 for more information.

Definitions of blue words are on pages 145–148.

Other than the examples above, you pay 100% for most prescription drugs, unless you have Part D or other drug coverage.



= Preventive service





### Prostate cancer screenings

Medicare covers a Prostate Specific Antigen (PSA) test and a digital rectal exam once every 12 months for men over 50 (beginning the day after your 50th birthday). You pay nothing for the PSA test. You pay 20% of the [Medicare-approved amount](#), and the Part B [deductible](#) applies for the digital rectal exam. In a hospital outpatient setting, you also pay the hospital a [copayment](#).

### Prosthetic/orthotic items

Medicare covers arm, leg, back, and neck braces; artificial eyes; artificial limbs (and their replacement parts); some types of breast prostheses (after mastectomy); and prosthetic devices needed to replace an internal body part or function (including ostomy supplies, and parenteral and enteral nutrition therapy) when ordered by a doctor or other health care provider enrolled in Medicare. For Medicare to cover your prosthetic or orthotic, you must go to a supplier that's enrolled in Medicare. You pay 20% of the Medicare-approved amount, and the Part B deductible applies.

#### Important!

**DMEPOS Competitive Bidding Program:** To get enteral nutrition therapy in some areas of the country, you generally must use specific suppliers called “contract suppliers,” or Medicare won't pay and you'll likely pay full price. See page 42 for more information.

### Pulmonary rehabilitation

Medicare covers a comprehensive pulmonary rehabilitation program if you have moderate to very severe chronic obstructive pulmonary disease (COPD) and have a [referral](#) from the doctor treating this chronic respiratory disease. You pay 20% of the Medicare-approved amount if you get the service in a doctor's office. You also pay the hospital a copayment per session if you get the service in a hospital outpatient setting. The Part B deductible applies.

### Rural health clinic services

Medicare covers many outpatient primary care and [preventive services](#) in rural health clinics. Generally, you pay 20% of the charges, and the Part B deductible applies. However, you pay nothing for most preventive services.



= Preventive service

## Second surgical opinions

Medicare covers second surgical opinions in some cases for surgery that isn't an emergency. In some cases, Medicare covers third surgical opinions. You pay 20% of the **Medicare-approved amount**, and the Part B deductible applies.



## Sexually transmitted infections screening and counseling

Medicare covers sexually transmitted infection (STI) screenings for chlamydia, gonorrhea, syphilis, and Hepatitis B. These screenings are covered for people with Medicare who are pregnant and for certain people who are at increased risk for an STI when the tests are ordered by a **primary care doctor** or other **primary care practitioner**. Medicare covers these tests once every 12 months or at certain times during pregnancy.

Medicare also covers up to 2 individual 20–30 minute, face-to-face, high-intensity behavioral counseling sessions each year for sexually active adults at increased risk for STIs. Medicare will only cover these counseling sessions if they're provided by a primary care doctor or other primary care practitioner and take place in a primary care setting (like a doctor's office). Counseling conducted in an inpatient setting, like a skilled nursing facility, won't be covered as a **preventive service**.

You pay nothing for these services if the primary care doctor or other qualified primary care practitioner accepts **assignment**.

## Speech-language pathology services

Medicare covers evaluation and treatment given to regain and strengthen speech and language skills, including cognitive and swallowing skills, when your doctor or other health care provider certifies you need it. There may be a limit on the amount Medicare will pay for these services in a single year, and there may be certain exceptions to these limits. You pay 20% of the Medicare-approved amount, and the Part B deductible applies.

## Surgical dressing services

Medicare covers these services for treatment of a surgical or surgically treated wound. You pay 20% of the Medicare-approved amount for the doctor's or other health care provider's services. You pay a fixed **copayment** for these services when you get them in a hospital outpatient setting. You pay nothing for the supplies and the Part B deductible applies.

Definitions of blue words are on pages 145–148.



= Preventive service

## Telehealth

Medicare covers limited medical or other health services, like office visits and consultations provided using an interactive, two-way telecommunications system (like real-time audio and video) by an eligible provider who isn't at your location. These services are available in some rural areas, under certain conditions, and only if you're located at one of these: a doctor's office, hospital, rural health clinic, federally-qualified health center, hospital-based dialysis facility, skilled nursing facility, or community mental health center. For most of these services, you pay 20% of the [Medicare-approved amount](#), and the Part B [deductible](#) applies.

## Tests (other than lab tests)

Medicare covers X-rays, MRIs, CT scans, EKGs, and some other diagnostic tests. You pay 20% of the Medicare-approved amount, and the Part B deductible applies. If you get the test at a hospital as an outpatient, you also pay the hospital a [copayment](#) that may be more than 20% of the Medicare-approved amount, but in most cases, this amount can't be more than the Part A hospital stay deductible. See Laboratory services on page 45 for other Part B-covered tests.

## Tobacco-use cessation counseling

**If you use tobacco and you're diagnosed with an illness caused or complicated by tobacco use, or you take a medicine that's affected by tobacco,** Medicare covers up to 8 face-to-face visits in a 12-month period. You pay 20% of the Medicare-approved amount, and the Part B deductible applies. In a hospital outpatient setting, you also pay the hospital a copayment.



**If you haven't been diagnosed with an illness caused or complicated by tobacco use,** Medicare coverage of tobacco use cessation counseling is considered a covered preventive service. Medicare covers up to 8 face-to-face visits in a 12-month period. You pay nothing for the counseling sessions if the doctor or other qualified health care provider accepts [assignment](#).

## Transplants and immunosuppressive drugs

Medicare covers doctor services for heart, lung, kidney, pancreas, intestine, and liver transplants under certain conditions and only in a Medicare-certified facility. Medicare covers bone marrow and cornea transplants under certain conditions.

Medicare covers immunosuppressive drugs if the transplant was eligible for Medicare payment or an employer or union group health plan was required to pay before Medicare paid for the transplant. You must have Part A at the time of the transplant, and you must have Part B at the time you get immunosuppressive drugs. You pay 20% of the [Medicare-approved amount](#) for the drugs, and the Part B [deductible](#) applies.

If you're thinking about joining a Medicare Advantage Plan (like an HMO or PPO) and are on a transplant waiting list or believe you need a transplant, check with the plan before you join to make sure your doctors, other health care providers, and hospitals are in the plan's network. Also, check the plan's coverage rules for prior authorization.

**Note:** Medicare drug plans (Part D) may cover immunosuppressive drugs, even if Medicare or an employer or union group health plan didn't pay for the transplant.

## Travel (health care needed when traveling outside the U.S.)

Medicare generally doesn't cover health care while you're traveling outside the U.S. (The "U.S." includes the 50 states, the District of Columbia, Puerto Rico, the U.S. Virgin Islands, Guam, the Northern Mariana Islands, and American Samoa.) There are some exceptions, including cases where Medicare may pay for services that you get while on board a ship within the territorial waters adjoining the land areas of the U.S. Medicare may pay for inpatient hospital, doctor, or ambulance services you get in a foreign country in these rare cases:

1. You're in the U.S. when an emergency occurs, and the foreign hospital is closer than the nearest U.S. hospital that can treat your medical condition.

Definitions of [blue](#) words are on pages 145–148.

2. You're traveling through Canada without unreasonable delay by the most direct route between Alaska and another state when a medical emergency occurs, and the Canadian hospital is closer than the nearest U.S. hospital that can treat the emergency.
3. You live in the U.S. and the foreign hospital is closer to your home than the nearest U.S. hospital that can treat your medical condition, regardless of whether an emergency exists.

Medicare may cover **medically necessary** ambulance transportation to a foreign hospital only with admission for medically necessary covered inpatient hospital services. You pay 20% of the **Medicare-approved amount**, and the Part B **deductible** applies.

### Urgently needed care

Medicare covers urgently needed care to treat a sudden illness or injury that isn't a medical emergency. You pay 20% of the Medicare-approved amount for the doctor's or other health care provider's services, and the Part B deductible applies. In a hospital outpatient setting, you also pay the hospital a **copayment**.



### “Welcome to Medicare” preventive visit

During the first 12 months that you have Part B, you can get a “Welcome to Medicare” preventive visit. This visit includes a review of your medical and social history related to your health, and education and counseling about **preventive services**, including certain screenings, shots, and **referrals** for other care if needed. When you make your appointment, let your doctor's office know that you would like to schedule your “Welcome to Medicare” preventive visit.

You pay nothing for the “Welcome to Medicare” preventive visit if the doctor or other qualified health care provider accepts **assignment**.

#### Important!

If your doctor or other health care provider performs additional tests or services during the same visit that aren't covered under this preventive benefit, you may have to pay coinsurance, and the Part B deductible may apply.



= Preventive service



### Yearly “Wellness” visit

If you’ve had Part B for longer than 12 months, you can get a yearly “Wellness” visit to develop or update a personalized plan to prevent disease or disability based on your current health and risk factors. This visit is covered once every 12 months.

Your provider will ask you to fill out a short questionnaire, called a Health Risk Assessment, as part of this visit. Answering these questions can help you and your provider develop a personalized prevention plan to help you stay healthy and get the most out of your visit. The questions are based on years of medical research and advice from the Centers for Disease Control and Prevention (CDC).

When you make your appointment, let your doctor’s office know that you would like to schedule your yearly “Wellness” visit.

**Note:** Your first yearly “Wellness” visit **can’t** take place within 12 months of your enrollment in Part B or your “Welcome to Medicare” preventive visit. However, you don’t need to have a “Welcome to Medicare” preventive visit before your yearly “Wellness” visit.

You pay nothing for the yearly “Wellness” visit if the doctor or other qualified health care provider accepts [assignment](#).

#### Important!

If your doctor or other health care provider performs additional tests or services during the same visit that aren’t covered under this preventive benefit, you may have to pay [coinsurance](#), and the Part B [deductible](#) may apply.

Definitions  
of [blue](#) words  
are on pages  
145–148.



= Preventive service



## Want to keep track of your preventive services?

Medicare covers many [preventive services](#) to help you stay healthy. Talk with your health care provider about which of these services are right for you. You can also use Medicare’s Blue Button to download your claim information. This will help you track the services you had and understand the services you might need. See page 133 for more information about the Blue Button.

Page	Medicare-covered preventive service	I need (yes/no)
53	“Welcome to Medicare” preventive visit (one-time)	
54	Yearly “Wellness” visit	
35	Abdominal aortic aneurysm screening	
35	Alcohol misuse screening and counseling	
37	Bone mass measurement	
37	Breast cancer screening (mammogram)	
37	Cardiovascular disease (behavioral therapy)	
38	Cardiovascular disease screenings	
38	Cervical and vaginal cancer screening	
39	Colorectal cancer screenings	
	Screening fecal occult blood test	
	Screening flexible sigmoidoscopy	
	Screening colonoscopy	
	Screening barium enema	

Page	Medicare-covered preventive service	I need (yes/no)
40	Depression screening	
40	Diabetes screenings	
40	Diabetes self-management training	
43	Flu shots	
43	Glaucoma tests	
44	Hepatitis B shots	
44	HIV screening	
45	Medical nutrition therapy services	
46	Obesity screening and counseling	
48	Pneumococcal shot	
49	Prostate cancer screenings	
50	Sexually transmitted infections screening and counseling	
51	Tobacco use cessation counseling (counseling for people with no sign of tobacco-related disease)	

## What's NOT covered by Part A and Part B?

Medicare doesn't cover everything. If you need certain services that aren't covered under Medicare Part A or Part B, you'll have to pay for them yourself unless:

- You have other insurance (or Medicaid) to cover the costs.
- You're in a [Medicare health plan](#) that covers these services.

Even if Medicare covers a service or item, you generally have to pay [deductibles](#), [coinsurance](#), and [copayments](#).

Some of the items and services that Medicare doesn't cover include:

- [Long-term care](#) (also called [custodial care](#)). See pages 127–129.
- Routine dental or eye care.
- Dentures.
- Cosmetic surgery.
- Acupuncture.
- Hearing aids and exams for fitting them.



If you have Original Medicare, visit [Medicare.gov/coverage](https://www.medicare.gov/coverage), or call 1-800-MEDICARE (1-800-633-4227) to find out if Medicare covers a service you need. [TTY](#) users should call 1-877-486-2048. If you're in a Medicare health plan, contact your plan.

If you have a question or complaint about the quality of a Medicare-covered service, call your local [Quality Improvement Organization \(QIO\)](#). Visit [Medicare.gov/contacts](https://www.medicare.gov/contacts) to get your QIO's phone number. You can also call 1-800-MEDICARE.

Definitions  
of [blue](#) words  
are on pages  
145–148.



## Section 4—

# Choose Your Health & Prescription Drug Coverage

This handbook has basic information. You'll need more detailed information than this handbook provides to make an informed choice. Before making any decisions, learn as much as you can about the types of coverage available to you.

### How can I get my Medicare coverage?

You can choose different ways to get your Medicare coverage.

1. You can choose Original Medicare. If you want prescription drug coverage, you must join a Medicare Prescription Drug Plan (Part D).
2. You can choose to join a [Medicare health plan](#), and the plan may include Medicare prescription drug coverage. In most cases, you must take the drug coverage that comes with the Medicare health plan.

If you don't join a Medicare health plan, you'll have Original Medicare. See the next page for more information about your coverage choices and the decisions you need to make.



Each fall, you should review your health and prescription needs because your health, finances, or plan's coverage may have changed. If you decide other coverage will better meet your needs, **you can switch plans between October 15–December 7**. See pages 80–82 and 88–89. If you're satisfied with your current plan's coverage for the following year, you don't need to do anything.

## What if I need help deciding how to get my Medicare?

1. Visit the Medicare Plan Finder at [Medicare.gov/find-a-plan](https://www.Medicare.gov/find-a-plan). The Medicare Plan Finder lets you compare plans by plan type and find out what the coverage, benefits, and estimated costs would be in each plan. It also shows you how Medicare has rated the plans' quality and performance. Here's an example of what you may see when using this tool:

The screenshot shows the Medicare.gov website interface. At the top, there is a search bar and navigation links for Email, Print, Bookmark & Share, RSS, and Español (Spanish). Below the search bar, there are tabs for Original Medicare, Prescription Drug Plans, and Medicare Health Plans with Drug Coverage. The results section shows 10 plans in 21244 that match preferences, sorted by Lowest Estimated Annual Health and Drug Cost. Two plans are highlighted:

Organization:	Estimated Annual Drug Costs:[?]	Monthly Premium: [?]	Deductibles [?] and Drug Copay [?] / Coinsurance:[?]	Health Benefits: [?]	Drug Coverage [?], Drug Restrictions[?] and Other Programs:	Estimated Annual Health and Drug Costs:[?]	Overall Star Rating:[?]	Enroll
<b>ABC Medicare Plan</b>	Retail Annual: \$0.00 Rest of 2013: \$0.00*	\$0.00 Drug: \$0.00 Health: \$0.00	Annual Drug Deductible: \$0 Health Plan Deductible: \$0 Drug Copay/Coinsurance: \$0 - \$80, 25%	Doctor Choice: Plan Doctors Only Out of Pocket Spending Limit: \$3,400 In-Network D V	All Your Drugs on Formulary: N/A Drug Restrictions: N/A No Gap Coverage MTM Program [?]: Yes	\$2,100	★★★★★ 4.5 out of 5 stars	Enroll
<b>XYZ Medicare Plan</b>	Retail Annual: \$0.00 Rest of 2013: \$0.00	\$0.00 Drug: \$0.00 Health: \$0.00	Annual Drug Deductible: \$50 Health Plan	Doctor Choice: Plan Doctors Only Out of Pocket	All Your Drugs on Formulary: N/A Drug Restrictions:	\$2,900	⚠️ Caution - This plan got	Enroll

2. Get personalized counseling about choosing coverage. See pages 141–144 for the phone number of your State Health Insurance Assistance Program (SHIP).
3. Call 1-800-MEDICARE (1-800-633-4227), and say “Agent.” TTY users should call 1-877-486-2048. If you need help in a language other than English or Spanish, let the customer service representative know.

Definitions of blue words are on pages 145–148.

## What are my Medicare coverage choices?

There are 2 main choices for how you get your Medicare coverage. Use these steps to help you decide.

### Step 1

#### Decide if you want Original Medicare or a Medicare Advantage Plan

##### Original Medicare includes Part A (Hospital Insurance) and/or Part B (Medical Insurance)

- Medicare provides this coverage directly.
- You have your choice of doctors, hospitals, and other providers that accept Medicare.
- Generally, you or your supplemental coverage pay **deductibles** and **coinsurance**.
- You usually pay a monthly **premium** for Part B.

See pages 61–67.

### Step 2

#### Decide if you want prescription drug coverage (Part D)

- If you want drug coverage, **you must join a Medicare Prescription Drug Plan**. You usually pay a monthly premium.
- These plans are run by private companies approved by Medicare.

See pages 87–102.

### Step 3

#### Decide if you want supplemental coverage

- You may want to get coverage that fills gaps in Original Medicare coverage. You can choose to buy a Medicare Supplement Insurance (Medigap) policy from a private company.
- Costs vary by policy and company.
- Employers/unions may offer similar coverage.

See pages 67–71.

##### Medicare Advantage Plan

(like an HMO or PPO)

##### Part C includes BOTH Part A (Hospital Insurance) and Part B (Medical Insurance)

- Private insurance companies approved by Medicare provide this coverage.
- In most plans, you need to use plan doctors, hospitals, and other providers or you may pay more or all of the costs.
- You may pay a monthly premium (in addition to your Part B premium) and a **copayment** or **coinsurance** for covered services.
- Costs, extra coverage, and rules vary by plan.

See pages 72–83.

### Step 2

#### Decide if you want prescription drug coverage (Part D)

- If you want drug coverage, and it's offered by your Medicare Advantage Plan, **in most cases you must get it through your plan**.
- In some types of plans that don't offer drug coverage, you can join a Medicare Prescription Drug Plan.

See page 75.

**Note:** If you join a Medicare Advantage Plan, you can't use Medicare Supplement Insurance (Medigap) to pay for out-of-pocket costs you have in the Medicare Advantage Plan. If you already have a Medicare Advantage Plan, you can't be sold a Medigap policy. You can only use a Medigap policy if you disenroll from your Medicare Advantage Plan and return to Original Medicare. See pages 70–71.

In addition to the options listed above, you may be able to join other types of **Medicare health plans**. See pages 83–86. Some people may have other coverage like employer or union, Medicaid, military, or Veterans' benefits. See pages 100–102 and 110–112.

## What should I consider when choosing or changing my coverage?

Coverage	Does the plan cover the services you need?
Your other coverage	Do you have, or are you eligible for, other types of health or prescription drug coverage (like from a former or current employer or union)? If so, read the materials from your insurer or plan, or call them to find out how the coverage works with, or is affected by, Medicare. If you have coverage through a former or current employer or union or other source, talk to your benefits administrator, insurer, or plan before making any changes to your coverage. If you drop your coverage, you may not be able to get it back.
Cost	How much are your <a href="#">premiums</a> , <a href="#">deductibles</a> , and other costs? How much do you pay for services like hospital stays or doctor visits? Is there a yearly limit on what you pay out-of-pocket? Your costs vary and may be different if you don't follow the coverage rules.
Doctor and hospital choice	Do your doctors and other health care providers accept the coverage? Are the doctors you want to see accepting new patients? Do you have to choose your hospital and health care providers from a network? Do you need to get <a href="#">referrals</a> ?
Prescription drugs	Do you need to join a Medicare drug plan? Are your drugs covered under the plan's <a href="#">formulary</a> ? Are there any coverage rules that apply to your prescriptions?
Quality of care	Are you satisfied with your medical care? The quality of care and services given by plans and other health care providers can vary. Medicare has information to help you compare how well plans and providers work to give you the best care possible. See page 134.
Convenience	Where are the doctors' offices? What are their hours? Do the doctors use electronic health records or prescribe electronically? Can you get an electronic copy of your information by email or to store in a personal health record? See pages 135–138. Which pharmacies can you use? Is the pharmacy you use in the plan's network? If it's in the network and your plan has preferred pharmacies, is your pharmacy preferred? You may pay more at non-preferred pharmacies. Can you get your prescriptions by mail?
Travel	Will you have coverage in another state or outside the U.S.?

# Section 5—

# Get Information about Your Medicare Health Coverage Choices

## How does Original Medicare work?



Original Medicare is one of your health coverage choices as part of Medicare. You'll have Original Medicare unless you choose a [Medicare health plan](#).

Original Medicare is coverage managed by the federal government. Generally, there's a cost for each service. See the next page for the general rules for how it works.

Definitions of [blue](#) words are on pages 145–148.

	Original Medicare
Can I get my health care from any doctor, other health care provider, or hospital?	In most cases, yes. You can go to any doctor, other health care provider, hospital, or other facility that's enrolled in Medicare and accepting new Medicare patients.
Are prescription drugs covered?	With a few exceptions (see pages 32 and 48), most prescriptions aren't covered. You can add drug coverage by joining a Medicare Prescription Drug Plan (Part D).
Do I need to choose a primary care doctor?	No.
Do I have to get a referral to see a specialist?	In most cases, no, but the specialist must be enrolled in Medicare.
Should I get a supplemental policy?	You may already have employer or union coverage that may pay costs that Original Medicare doesn't. If not, you may want to buy a Medicare Supplement Insurance (Medigap) policy. See pages 67–71.
What else do I need to know about Original Medicare?	<ul style="list-style-type: none"> <li>▪ You generally pay a set amount for your health care (<b>deductible</b>) before Medicare pays its share. Then, Medicare pays its share, and you pay your share (<b>coinsurance/copayment</b>) for covered services and supplies. There's no yearly limit for what you pay out-of-pocket.</li> <li>▪ You usually pay a monthly <b>premium</b> for Part B. See pages 108–109 for information about help paying your Part B premium.</li> <li>▪ You generally don't need to file Medicare claims. The law requires providers (like doctors, hospitals, skilled nursing facilities, and home health agencies) and suppliers to file your claims for the covered services and supplies you get.</li> </ul>

## What do I pay?

Your out-of-pocket costs in Original Medicare depend on:

- Whether you have Part A and/or Part B. Most people have both.
- Whether your doctor, other health care provider, or supplier accepts “assignment.”
- The type of health care you need and how often you need it.
- Whether you choose to get services or supplies Medicare doesn’t cover. If you do, you pay all costs unless you have other insurance that covers it.
- Whether you have other health insurance that works with Medicare.
- Whether you have Medicaid or get help from your state paying your Medicare costs.
- Whether you have a Medicare Supplement Insurance (Medigap) policy.
- Whether you and your doctor or other health care provider sign a private contract. See page 66.

For more information on how other insurance works with Medicare, see pages 24–25. For more information about help to cover the costs that Original Medicare doesn’t cover, see pages 108–109.

## What are Medicare Summary Notices?

If you have Original Medicare, you’ll get a “Medicare Summary Notice” (MSN) in the mail every 3 months that lists all the services billed to Medicare. The notice shows what Medicare paid and what you may owe the provider. **This notice isn’t a bill.** Read it carefully and do the following:

- If you have other insurance, check to see if it covers anything that Medicare didn’t.
- Keep your receipts and bills, and compare them to your notice to be sure you got all the services, supplies, or equipment listed. See pages 122–125 for information on Medicare fraud.
- If you paid a bill before you got your notice, compare your notice with the bill to make sure you paid the right amount for your services.
- If an item or service is denied, call your doctor’s or other health care provider’s office to make sure they submitted the correct information. If not, the office may resubmit the claim.

**If you disagree with any decision made, you can file an appeal.**

See pages 114–118.

Definitions  
of blue words  
are on pages  
145–148.

If you need to change your address on your notice, call Social Security at 1-800-772-1213. TTY users should call 1-800-325-0778. If you get Railroad Retirement Board (RRB) benefits, call the RRB at 1-877-772-5772. TTY users should call 1-312-751-4701.

### Important!

#### Check your MSN on MyMedicare.gov

You don't have to wait for your MSN to come in the mail to view your Medicare claims or file an appeal. Visit MyMedicare.gov to look at your Medicare claims or view electronic MSNs. Your claims generally will be available for viewing within 24 hours after processing. You can also download your claims information by using Medicare's Blue Button. See page 133.

#### What's assignment?

**Assignment** means that your doctor, provider, or supplier agrees (or is required by law) to accept the **Medicare-approved amount** as full payment for covered services.

#### Make sure your doctor, provider, or supplier accepts assignment



Most doctors, providers, and suppliers accept assignment, but you should always check to make sure. Participating providers have signed an agreement to accept assignment for all Medicare-covered services. Here's what happens if your doctor, provider, or supplier accepts assignment:

- Your out-of-pocket costs may be less.
- They agree to charge you only the Medicare **deductible** and **coinsurance** amount and usually wait for Medicare to pay its share before asking you to pay your share.
- They have to submit your claim directly to Medicare and can't charge you for submitting the claim.

Definitions of blue words are on pages 145–148.



### If your doctor, provider, or supplier doesn't accept assignment

Non-participating providers haven't signed an agreement to accept **assignment** for all Medicare-covered services, but they can still choose to accept assignment for individual services. These providers are called “non-participating.” Here's what happens if your doctor, provider, or supplier doesn't accept assignment:

- **You might have to pay the entire charge at the time of service.**

Your doctor, provider, or supplier is supposed to submit a claim to Medicare for any Medicare-covered services they provide to you. They can't charge you for submitting a claim. If they don't submit the Medicare claim once you ask them to, call 1-800-MEDICARE (1-800-633-4227). **TTY** users should call 1-877-486-2048.

**Note:** In some cases, you might have to submit your own claim to Medicare using form CMS-1490S to get paid back. Visit [Medicare.gov/medicareonlineforms](https://www.medicare.gov/medicareonlineforms), or call 1-800-MEDICARE for the form and instructions.

- **They can charge you more than the **Medicare-approved amount**, but there's a limit called “the limiting charge.”**

The limiting charge applies only to certain Medicare-covered services and doesn't apply to some supplies and durable medical equipment. Call 1-800-MEDICARE to find out if you were charged the right amount.

#### Important!

To find out if your doctors and other health care providers accept assignment or participate in Medicare, visit [Medicare.gov/physician](https://www.Medicare.gov/physician) or [Medicare.gov/supplier](https://www.Medicare.gov/supplier). You can also call 1-800-MEDICARE, or ask your doctor, provider, or supplier if they accept assignment.

### What are private contracts?

A “private contract” is a written agreement between you and a doctor or other health care provider who has decided **not** to provide services to anyone through Medicare. The private contract only applies to the services provided by the doctor or other provider who asked you to sign it.

### Rules for private contracts

**You don't have to sign a private contract.** You can always go to another provider who gives services through Medicare. If you sign a private contract with your doctor or other provider:

- **Medicare won't pay any amount for the services you get from this doctor or provider, even if it's a Medicare-covered service.**
- You'll have to pay the full amount of whatever this provider charges you for the services you get.
- If you have a Medicare Supplement Insurance (Medigap) policy, it won't pay anything for the services you get. Call your insurance company before you get the service if you have questions.
- Your provider must tell you if Medicare would pay for the service if you get it from another provider who accepts Medicare.
- Your provider must tell you if he or she has been excluded from Medicare.
- You can always get services not covered by Medicare if you choose to pay for them yourself.

**Note:** You can't be asked to sign a private contract for emergency or urgent care.

You should contact your State Health Insurance Assistance Program (SHIP) to get help before signing a private contract with any doctor or other health care provider. See pages 141–144 for the phone number.

### Can I add drug coverage (Part D) to Original Medicare?

In Original Medicare, **if you don't already have [creditable prescription drug coverage](#)** (for example, from a current or former employer or union) and you would like Medicare prescription drug coverage, you must join a Medicare Prescription Drug Plan. These plans are available through private companies under contract with Medicare. If you don't currently have [creditable prescription drug coverage](#), you should think about joining a Medicare Prescription Drug Plan as soon as you're eligible. **If you don't join a Medicare Prescription Drug Plan when you're first eligible and you decide to join later, you may have to pay a late enrollment penalty.** See pages 94–95 for more information.

Definitions of [blue](#) words are on pages 145–148.

If you have **creditable prescription drug coverage** from an employer or union, call your employer or union's benefits administrator before you make any changes to your coverage.



Your employer or union plan will tell you each year if your prescription drug coverage is creditable. If you drop your employer or union coverage, you may not be able to get it back. You also may not be able to drop your employer or union **drug** coverage without also dropping your employer or union **health** (doctor and hospital) coverage. If you drop coverage for yourself, you may also have to drop coverage for your spouse and dependents.

## What are Medicare Supplement Insurance (Medigap) policies?

Original Medicare pays for many, but not all, health care services and supplies. Medicare Supplement Insurance policies, sold by private companies, can help pay some of the health care costs that Original Medicare doesn't cover, like **copayments**, **coinsurance**, and **deductibles**. **Medicare Supplement Insurance policies are also called Medigap policies.**



Some Medigap policies also offer coverage for services that Original Medicare doesn't cover, like medical care when you travel outside the U.S. If you have Original Medicare and you buy a Medigap policy, Medicare will pay its share of the **Medicare-approved amount** for covered health care costs. Then, your Medigap policy pays its share. You have to pay the **premiums** for a Medigap policy.

## Medigap policies are standardized

Every Medigap policy must follow federal and state laws designed to protect you and it must be clearly identified as “Medicare Supplement Insurance.” Insurance companies can sell you only a “standardized” policy identified in most states by letters A–N. All policies offer the same basic benefits, but some offer additional benefits so you can choose which one meets your needs. In Massachusetts, Minnesota, and Wisconsin, Medigap policies are standardized in a different way.

**Note:** Plans E, H, I, and J are no longer available to buy, but if you already have one of those policies, you can keep it. Contact your insurance company for more information.

## How do I compare Medigap policies?

**Different insurance companies may charge different premiums for the same exact policy.** As you shop for a policy, be sure you’re comparing the same policy (for example, compare Plan A from one company with Plan A from another company.)



In some states, you may be able to buy a type of Medigap policy called Medicare SELECT (a policy that requires you to use specific hospitals and, in some cases, specific doctors or other health care providers to get full coverage). If you buy a Medicare SELECT policy, you have the right to change your mind within 12 months and switch to a standard Medigap policy.

Definitions  
of **blue** words  
are on pages  
145–148.

The chart below shows basic information about the different benefits that Medigap policies cover. If a percentage appears, the Medigap plan covers that percentage of the benefit and you're responsible to pay the rest.

**Note:** You'll need more details than this chart provides to compare and choose a policy. See page 71 to find out where to get more information.

Benefits	Medicare Supplement Insurance (Medigap) plans									
	A	B	C	D	F*	G	K	L	M	N
Medicare Part A coinsurance and hospital costs (up to an additional 365 days after Medicare benefits are used)	100%	100%	100%	100%	100%	100%	100%	100%	100%	100%
Medicare Part B coinsurance or copayment	100%	100%	100%	100%	100%	100%	50%	75%	100%	100%**
Blood (first 3 pints)	100%	100%	100%	100%	100%	100%	50%	75%	100%	100%
Part A hospice care coinsurance or copayment	100%	100%	100%	100%	100%	100%	50%	75%	100%	100%
Skilled nursing facility care coinsurance			100%	100%	100%	100%	50%	75%	100%	100%
Medicare Part A deductible		100%	100%	100%	100%	100%	50%	75%	50%	100%
Medicare Part B deductible			100%		100%					
Medicare Part B excess charges					100%	100%				
Foreign travel emergency (up to plan limits)			100%	100%	100%	100%			100%	100%
							Out-of-pocket limit in 2013			
							\$4,800	\$2,400		

\* Plan F also offers a high-deductible plan in some states. If you choose this option, this means you must pay for Medicare-covered costs (coinsurance, copayments, deductibles) up to the deductible amount of \$2,110 in 2013 before your policy pays anything.

\*\* Plan N pays 100% of the Part B coinsurance, except for a copayment of up to \$20 for some office visits and up to a \$50 copayment for emergency room visits that don't result in an inpatient admission.

## What else should I know about Medicare Supplement Insurance (Medigap)?

### Important facts

- You must have Part A and Part B.
- You pay a monthly **premium** for your Medigap policy in addition to your monthly Part B and Part D premiums.
- A Medigap policy only covers one person. Spouses must buy separate policies.
- You can't have prescription drug coverage in both your Medigap policy and a Medicare drug plan. See page 100.
- It's important to compare Medigap policies since the costs can vary and may go up as you get older. Some states limit Medigap premium costs.

### When to buy

- The best time to buy a Medigap policy is during your Medigap Open Enrollment Period. This 6-month period begins on the first day of the month in which you're 65 or older **and** enrolled in Part B. (Some states have additional open enrollment periods.) After this enrollment period, your option to buy a Medigap policy may be limited and it may cost more.
- If you delay enrolling in Part B because you have group health coverage based on your (or your spouse's) current employment, your Medigap Open Enrollment Period won't start until you sign up for Part B.
- Federal law doesn't require insurance companies to sell Medigap policies to people under 65. If you're under 65, you might not be able to buy the Medigap policy you want, or any Medigap policy, until you turn 65. However, some states require Medigap insurance companies to sell Medigap policies to people under 65.

## How does Medigap work with Medicare Advantage Plans?

- If you have a Medigap policy and join a Medicare Advantage Plan (like an HMO or PPO), you may want to drop your Medigap policy. Your Medigap policy **can't** be used to pay your Medicare Advantage Plan **copayments**, **deductibles**, and premiums. If you want to cancel your Medigap policy, contact your insurance company. In most cases, if you drop your Medigap policy to join a Medicare Advantage Plan, you won't be able to get it back.

Definitions of **blue** words are on pages 145–148.

- If you have a Medicare Advantage Plan, it's illegal for anyone to sell you a Medigap policy unless you're switching back to Original Medicare. If you want to switch to Original Medicare and buy a Medigap policy, find out what policies are available to you and contact your Medicare Advantage Plan to see if you're able to disenroll. You'll need to let the Medigap insurer know the date your plan coverage will end. If you don't intend to leave your Medicare Advantage Plan, and someone tries to sell you a Medigap policy, report it to your State Insurance Department.
- If you join a Medicare Advantage Plan for the first time, and you aren't happy with the plan, you'll have special rights to buy a Medigap policy if you return to Original Medicare within 12 months of joining.
  - If you had a Medigap policy before you joined, you may be able to get the same policy back if the company still sells it. If it isn't available, you can buy another Medigap policy.
  - If you joined a Medicare Advantage Plan when you were first eligible for Medicare, you can choose from any Medigap policy.
  - The Medigap policy can no longer have prescription drug coverage even if you had it before, but you may be able to join a Medicare Prescription Drug Plan.

### **Where can I get more information about Medicare Supplement Insurance (Medigap)?**

- Visit [Medicare.gov/medigap](https://www.Medicare.gov/medigap) to find policies in your area.
- Visit [Medicare.gov/publications](https://www.Medicare.gov/publications) to view the booklet “Choosing a Medigap Policy: A Guide to Health Insurance for People with Medicare.” You can also call 1-800-MEDICARE (1-800-633-4227) to find out if a copy can be mailed to you. **TTY** users should call 1-877-486-2048.
- Call your State Insurance Department. Visit [Medicare.gov/contacts](https://www.Medicare.gov/contacts), or call 1-800-MEDICARE to get the phone number.
- Call your State Health Insurance Assistance Program (SHIP). See pages 141–144 for the phone number.

## What are Medicare Advantage Plans (Part C)?

A Medicare Advantage Plan (like an HMO or PPO) is another way to get your Medicare coverage. If you join a Medicare Advantage Plan, you still have Medicare. You'll get your Medicare Part A (Hospital Insurance) and Medicare Part B (Medical Insurance) coverage from the Medicare Advantage Plan, not Original Medicare. Medicare Advantage Plans, sometimes called “Part C” or “MA Plans,” are offered by private companies approved by Medicare.

### Medicare Advantage Plans cover all Medicare services

In all types of Medicare Advantage Plans, you're always covered for emergency and urgent care. Medicare Advantage Plans must cover all of the services that Original Medicare covers except hospice care and some care in qualifying clinical research studies. Original Medicare covers hospice care and some costs for clinical research studies even if you're in a Medicare Advantage Plan.

Medicare Advantage Plans may offer extra coverage, like vision, hearing, dental, and health and wellness programs. Most include Medicare prescription drug coverage (Part D). In addition to your Part B [premium](#), you may pay a monthly premium for the Medicare Advantage Plan.

### Medicare Advantage Plans must follow Medicare's rules

Medicare pays a fixed amount for your care each month to the companies offering Medicare Advantage Plans. These companies must follow rules set by Medicare. However, each Medicare Advantage Plan can charge different out-of-pocket costs and have different rules for how you get services (like whether you need a [referral](#) to see a specialist or if you have to go to doctors, facilities, or suppliers that belong to the plan for non-emergency or non-urgent care). These rules can change each year. The plan must notify you about any changes before the start of the next enrollment year.

#### Important!

### Read the information you get from your plan

If you're in a [Medicare plan](#), review the “Evidence of Coverage” (EOC) and “Annual Notice of Change” (ANOC) your plan sends you each year. The EOC gives you details about what the plan covers, how much you pay, and more. The ANOC includes any changes in coverage, costs, or [service area](#) that will be effective in January. If you don't get these important documents, contact your plan.



### There are different types of Medicare Advantage Plans:

- **Health Maintenance Organization (HMO) plans**—In most HMOs, you can only go to doctors, other health care providers, or hospitals in the plan’s network except in an emergency. You may also need to get a [referral](#) from your [primary care doctor](#). See page 78.
- **Preferred Provider Organization (PPO) plans**—In a PPO, you pay less if you use doctors, hospitals, and other health care providers that belong to the plan’s network. You usually pay more if you use doctors, hospitals, and providers outside of the network. See page 78.
- **Private Fee-for-Service (PFFS) plans**—PFFS plans are similar to Original Medicare in that you can generally go to any doctor, other health care provider, or hospital as long as they agree to treat you. The plan determines how much it will pay doctors, other health care providers, and hospitals, and how much you must pay when you get care. See page 79.
- **Special Needs Plans (SNPs)**—SNPs provide focused and specialized health care for specific groups of people, like those who have both Medicare and Medicaid, live in a nursing home, or have certain chronic medical conditions. See page 79.
- **HMO Point-of-Service (HMOPOS) plans**—These are HMO plans that may allow you to get some services out-of-network for a higher [copayment](#) or [coinsurance](#).
- **Medical Savings Account (MSA) plans**—This is a plan that combines a high-[deductible](#) health plan with a bank account. Medicare deposits money into the account (usually less than the deductible). You can use the money to pay for your health care services during the year. MSA plans don’t offer Medicare drug coverage. If you want drug coverage, you have to join a Medicare Prescription Drug Plan. For more information about MSAs, visit [Medicare.gov/publications](https://www.Medicare.gov/publications) to view the booklet “Your Guide to Medicare Medical Savings Account Plans.” You can also call 1-800-MEDICARE (1-800-633-4227) to find out if a copy can be mailed to you. [TTY](#) users should call 1-877-486-2048.

Definitions of [blue](#) words are on pages 145–148.

#### Important!

Make sure you understand how a plan works before you join. See pages 78–79 for more information about Medicare Advantage Plan types. If you want more information about a Medicare Advantage Plan, you can call any plan and request a “Summary of Benefits” (SB) document. Contact your State Health Insurance Assistance Program (SHIP) for help comparing plans. See pages 141–144 for the phone number.

## What else should I know about Medicare Advantage Plans?

### Important facts

- You have Medicare rights and protections, including the right to appeal. See pages 114–118.
- You can check with the plan before you get a service to find out if it's covered and what your costs may be.
- You must follow plan rules. It's important to check with the plan for information about your rights and responsibilities.
- If you go to a doctor, other health care provider, facility, or supplier that doesn't belong to the plan, your services may not be covered, or your costs could be higher. In most cases, this applies to Medicare Advantage HMOs and PPOs.
- If you join a clinical research study, some costs may be covered by Original Medicare and some may be covered by your Medicare Advantage Plan.
- Medicare Advantage Plans can't charge more than Original Medicare for certain services, like chemotherapy, dialysis, and [skilled nursing facility care](#).
- Medicare Advantage Plans have a yearly cap on how much you pay for Part A and Part B services during the year. This yearly maximum out-of-pocket amount can be different between Medicare Advantage Plans and can change each year. You should consider this when you choose a plan.

### Joining and leaving

- You can join a Medicare Advantage Plan even if you have a pre-existing condition, except for End-Stage Renal Disease (ESRD). See page 76.
- You can only join or leave a plan at certain times during the year. See pages 80–82.
- Each year, Medicare Advantage Plans can choose to leave Medicare or make changes to the services they cover and what you pay. If the plan decides to stop participating in Medicare, you'll have to join another [Medicare health plan](#) or return to Original Medicare. See page 114.
- Medicare Advantage Plans must follow certain rules when giving you information about how to join their plan. See page 124 for more information about these rules and how to protect your personal information.

Definitions of [blue](#) words are on pages 145–148.

### Prescription drug coverage



You usually get prescription drug coverage (Part D) through the Medicare Advantage Plan. In some types of plans that don't offer drug coverage, you can join a Medicare Prescription Drug Plan. **If your Medicare Advantage Plan includes prescription drug coverage and you join a Medicare Prescription Drug Plan, you'll be disenrolled from your Medicare Advantage Plan and returned to Original Medicare.**

### Who can join?

You must meet these conditions to join a Medicare Advantage Plan:

- You have Part A and Part B.
- You live in the plan's [service area](#).
- You don't have End-Stage Renal Disease (ESRD), except as explained on page 76.

### What if I have other coverage?

Talk to your employer, union, or other benefits administrator about their rules before you join a Medicare Advantage Plan. In some



cases, joining a Medicare Advantage Plan might cause you to lose your employer or union coverage. If you lose coverage for yourself, you may also lose coverage for your spouse and dependents. In other cases, if you join a Medicare Advantage Plan, you may still be able to use your employer or union coverage along with the plan you join. **Remember, if you drop your employer or union coverage, you may not be able to get it back.**

**What if I have a Medicare Supplement Insurance Policy?**

You can't use (and can't be sold) a Medicare Supplement Insurance (Medigap) policy while you're in a Medicare Advantage Plan. You can't use it to pay for any expenses ([copayments](#), [deductibles](#), and [premiums](#)) you have under a Medicare Advantage Plan. If you already have a Medigap policy and join a Medicare Advantage Plan, you'll probably want to drop your Medigap policy. **If you drop your Medigap policy, you may not be able to get it back.** See pages 67–71.

**What if I have End-Stage Renal Disease (ESRD)?**

If you have End-Stage Renal Disease (ESRD), you can only join a Medicare Advantage Plan in certain situations:

- If you're already in a Medicare Advantage Plan when you develop ESRD, you may be able to stay in your plan or join another plan offered by the same company.
- If you're in a Medicare Advantage Plan, and the plan leaves Medicare or no longer provides coverage in your area, you have a one-time right to join another plan.
- If you have an employer or union health plan or other health coverage through a company that offers Medicare Advantage Plans, you may be able to join one of their Medicare Advantage Plans.
- If you've had a successful kidney transplant, you may be able to join a Medicare Advantage Plan.
- You may be able to join a Medicare Special Needs Plan (SNP) for people with ESRD if one is available in your area.

For more information visit [Medicare.gov/publications](https://www.Medicare.gov/publications) to view the booklet “Medicare Coverage of Kidney Dialysis and Kidney Transplant Services.” You can also call 1-800-MEDICARE (1-800-633-4227) to find out if a copy can be mailed to you. [TTY](#) users should call 1-877-486-2048.

**Note:** If you have ESRD and Original Medicare, you may join a Medicare Prescription Drug Plan.

Definitions  
of [blue](#) words  
are on pages  
145–148.

## What do I pay?

Your out-of-pocket costs in a Medicare Advantage Plan depend on:

- Whether the plan charges a monthly **premium**.
- Whether the plan pays any of your monthly Part B premium.
- Whether the plan has a yearly **deductible** or any additional deductibles for certain services.
- How much you pay for each visit or service (**copayments** or **coinsurance**).
- The type of health care services you need and how often you get them.
- Whether you go to a doctor or supplier who accepts **assignment** (if you're in a Preferred Provider Organization, Private Fee-for-Service Plan, or Medical Savings Account Plan and you go out-of-network). See pages 64–66 for more information about assignment.
- Whether you follow the plan's rules, like using network providers.
- Whether you need extra benefits and if the plan charges for it.
- The plan's yearly limit on your out-of-pocket costs for all medical services. Once you reach this limit, you'll pay nothing for covered services.
- Whether you have Medicaid or get help from your state.



To learn more about your costs in specific Medicare Advantage Plans, visit [Medicare.gov/find-a-plan](https://www.Medicare.gov/find-a-plan). You can also call 1-800-MEDICARE (1-800-633-4227). **TTY** users should call 1-877-486-2048.

## How do Medicare Advantage Plans work?

	Health Maintenance Organization (HMO) plan	Preferred Provider Organization (PPO) plan
<b>Can I get my health care from any doctor, other health care provider, or hospital?</b>	No. You generally must get your care and services from doctors, other health care providers, or hospitals in the plan's network (except emergency care, out-of-area urgent care, or out-of-area dialysis). In some plans, you may be able to go out-of-network for certain services, usually for a higher cost. This is called an HMO with a point-of-service (POS) option.	In most cases, yes. PPOs have network doctors, other health care providers, and hospitals, but you can also use out-of-network providers for covered services, usually for a higher cost.
<b>Are prescription drugs covered?</b>	In most cases, yes. Ask the plan. If you want Medicare drug coverage, you must join an HMO Plan that offers prescription drug coverage.	In most cases, yes. Ask the plan. If you want Medicare drug coverage, you must join a PPO plan that offers prescription drug coverage.
<b>Do I need to choose a primary care doctor?</b>	In most cases, yes.	No.
<b>Do I have to get a referral to see a specialist?</b>	In most cases, yes. Certain services, like yearly screening mammograms, don't require a referral.	In most cases, no.
<b>What else do I need to know about this type of plan?</b>	<ul style="list-style-type: none"> <li>▪ If your doctor or other health care provider leaves the plan, your plan will notify you. You can choose another doctor in the plan.</li> <li>▪ If you get health care outside the plan's network, you may have to pay the full cost.</li> <li>▪ It's important that you follow the plan's rules, like getting prior approval for a certain service when needed.</li> </ul>	<ul style="list-style-type: none"> <li>▪ PPO plans aren't the same as Original Medicare or Medigap.</li> <li>▪ Medicare PPO plans usually offer more benefits than Original Medicare, but you may have to pay extra for these benefits.</li> </ul>

**There may be several private companies that offer different types of Medicare Advantage Plans in your area. Each plan can vary.** Read individual plan materials carefully to make sure you understand the plan's rules. You may want to contact the plan to find out if the service you need is covered and how much it costs. Visit the Medicare Plan Finder at [Medicare.gov/find-a-plan](https://www.medicare.gov/find-a-plan) to find plans in your area. You can also call 1-800-MEDICARE (1-800-633-4227). TTY users should call 1-877-486-2048.

Private Fee-for-Service (PFFS) plan	Special Needs Plan (SNP)
<p>In some cases, yes. You can go to any Medicare-approved doctor, other health care provider, or hospital that accepts the plan's payment terms and agrees to treat you. Not all providers will. If you join a PFFS plan that has a network, you can also see any of the network providers who have agreed to always treat plan members. You can also choose an out-of-network doctor, hospital, or other provider, who accepts the plan's terms, but you may pay more.</p>	<p>You generally must get your care and services from doctors, other health care providers, or hospitals in the plan's network (except emergency care, out-of-area urgent care, or out-of-area dialysis).</p>
<p>Sometimes. If your PFFS plan doesn't offer drug coverage, you can join a Medicare Prescription Drug Plan (Part D) to get coverage.</p>	<p>Yes. All SNPs must provide Medicare prescription drug coverage (Part D).</p>
<p>No.</p>	<p>Generally, yes.</p>
<p>No.</p>	<p>In most cases, yes. Certain services, like yearly screening mammograms, don't require a <a href="#">referral</a>.</p>
<ul style="list-style-type: none"> <li>▪ PFFS plans aren't the same as Original Medicare or Medigap.</li> <li>▪ The plan decides how much you must pay for services.</li> <li>▪ Some PFFS plans contract with a network of providers who agree to always treat you even if you've never seen them before.</li> <li>▪ Out-of-network doctors, hospitals, and other providers may decide not to treat you even if you've seen them before.</li> <li>▪ For each service you get, make sure your doctors, hospitals, and other providers agree to treat you under the plan, and accept the plan's payment terms.</li> <li>▪ In an emergency, doctors, hospitals, and other providers must treat you.</li> </ul>	<ul style="list-style-type: none"> <li>▪ A plan must limit membership to these groups: 1) people who live in certain <a href="#">institutions</a> (like a nursing home) or who require nursing care at home, or 2) people who are eligible for both Medicare and Medicaid, or 3) people who have specific chronic or disabling conditions (like diabetes, ESRD, HIV/AIDS, chronic heart failure, or dementia). Plans may further limit membership.</li> <li>▪ Plans should coordinate the services and providers you need to help you stay healthy and follow doctor's or other health care provider's orders.</li> <li>▪ For more information about SNPs, visit <a href="https://www.Medicare.gov/publications">Medicare.gov/publications</a> to view the booklet "Your Guide to Medicare Special Needs Plans (SNPs)."</li> </ul>

## When can I join, switch, or drop a Medicare Advantage Plan?

- **When you first become eligible for Medicare**, you can join during the 7-month period that begins 3 months before the month you turn 65, includes the month you turn 65, and ends 3 months after the month you turn 65.
- **If you get Medicare due to a disability**, you can join during the 7-month period that begins 3 months before your 25th month of disability and ends 3 months after your 25th month of disability.
- **Between October 15–December 7** anyone can join, switch, or drop a Medicare Advantage Plan. Your coverage will begin on January 1, as long as the plan gets your request by December 7.

## Can I make changes to my coverage after December 7?

Between January 1–February 14, if you're in a Medicare Advantage Plan, you can leave your plan and switch to Original Medicare. If you switch to Original Medicare during this period, you'll have until February 14 to also join a Medicare Prescription Drug Plan to add drug coverage. Your coverage will begin the first day of the month after the plan gets your enrollment request. During this period, you **can't**:

- Switch from Original Medicare to a Medicare Advantage Plan.
- Switch from one Medicare Advantage Plan to another.
- Switch from one Medicare Prescription Drug Plan to another.
- Join, switch, or drop a Medicare Medical Savings Account Plan.

## Special Enrollment Periods

In most cases, you must stay enrolled for the calendar year starting the date your coverage begins. However, in certain situations, you may be able to join, switch, or drop a Medicare Advantage Plan during a Special Enrollment Period. Contact your plan if:

- You move out of your plan's [service area](#).
- You have Medicaid.
- You qualify for [Extra Help](#). See pages 103–107.
- You live in an [institution](#) (like a nursing home).

Definitions of blue words are on pages 145–148.



### 5-Star Special Enrollment Period

Medicare uses information from member satisfaction surveys, plans, and health care providers to rate the overall performance of plans. A plan can get an overall rating between 1 and 5 stars. A 5-star rating is considered excellent. These ratings help you compare plans based on quality and performance. These ratings are updated each fall and can change each year.

You can switch to a Medicare Advantage Plan or Medicare Cost Plan (see page 83) that has **5 stars for its overall star rating** from December 8, 2013–November 30, 2014.

- The overall star ratings are available at [Medicare.gov/find-a-plan](http://Medicare.gov/find-a-plan).
- You can only join a 5-star Medicare Advantage Plan or Medicare Cost Plan if one is available in your area.
- You can only use this Special Enrollment Period once during the above timeframe.

For more information about overall star ratings, visit [Medicare.gov](http://Medicare.gov).

#### Important!

You may lose your prescription drug coverage if you move from a Medicare Advantage Plan that has drug coverage to a 5-star Medicare Advantage Plan that doesn't. You'll have to wait until the next Open Enrollment Period to get drug coverage, and you may have to pay a late enrollment penalty. See pages 94–95.

**Important!****Don't give out personal information**

In most cases, Medicare Advantage Plans can't:

- Call you to enroll you in a plan, unless you specifically ask to be called.
- Ask you for financial information, including credit card or bank account numbers, over the phone. Don't give your personal information to anyone who calls you to enroll in a plan.
- Call you without your permission or come to your home uninvited to sell Medicare products.

See pages 122–125 for more information about how to protect yourself from identity theft and fraud. If you believe a plan has misled you, call 1-800-MEDICARE (1-800-633-4227). TTY users should call 1-877-486-2048.

**How do I switch?**

Follow these steps if you're already in a Medicare Advantage Plan and want to switch:

- **To switch to a new Medicare Advantage Plan**, simply join the plan you choose during one of the enrollment periods explained on pages 80–82. You'll be disenrolled automatically from your old plan when your new plan's coverage begins.
- **To switch to Original Medicare**, contact your current plan, or call 1-800-MEDICARE. If you don't have drug coverage, you should carefully consider Medicare prescription drug coverage (Part D). You may also want to consider a Medicare Supplement Insurance (Medigap) policy if you're eligible. See pages 67–71 for more information about buying a Medigap policy.

For more information on joining, dropping, and switching plans, visit [Medicare.gov/publications](https://www.Medicare.gov/publications) to view the fact sheet “Understanding Medicare Part C & D Enrollment Periods.” You can also call 1-800-MEDICARE to find out if a copy can be mailed to you.

Definitions  
of blue words  
are on pages  
145–148.

## Are there other types of Medicare health plans?

Some types of [Medicare health plans](#) that provide health care coverage aren't Medicare Advantage Plans but are still part of Medicare. Some of these plans provide Medicare Part A (Hospital Insurance) and Medicare Part B (Medical Insurance) coverage, while most others provide only Part B coverage. In addition, some also provide Part D prescription drug coverage. These plans have some of the same rules as Medicare Advantage Plans. However, each type of plan has special rules and exceptions, so you should contact any plans you're interested in to get more details.

### Medicare Cost Plans

Medicare Cost Plans are a type of Medicare health plan available in certain areas of the country. Here's what you should know about Medicare Cost Plans:

- You can join even if you only have Part B.
- If you have Part A and Part B and go to a non-network provider, the services are covered under Original Medicare. You would pay the Part A and Part B [coinsurance](#) and [deductibles](#).
- You can join anytime the plan is accepting new members.
- You can leave anytime and return to Original Medicare.
- You can either get your Medicare prescription drug coverage from the plan (if offered), or you can join a Medicare Prescription Drug Plan.

**Note:** You can add or drop Medicare prescription drug coverage only at certain times. See pages 88–89.

There's another type of Medicare Cost Plan that only provides coverage for Part B services. These plans are either sponsored by employer or union group health plans or offered by companies that don't provide Part A services. Part A services are covered through Original Medicare. These plans never include Part D.

For more information about Medicare Cost Plans, contact the plans you're interested in. You can also visit the Medicare Plan Finder at [Medicare.gov/find-a-plan](https://www.medicare.gov/find-a-plan). Your State Health Insurance Assistance Program (SHIP) can also give you more information. See pages 141–144 for the phone number.

### Programs of All-inclusive Care for the Elderly (PACE)

PACE is a Medicare and Medicaid program offered in many states that allows people who otherwise need a nursing home-level of care to remain in the community. To qualify for PACE, you must meet these conditions:

- You're 55 or older.
- You live in the [service area](#) of a PACE organization.
- You're certified by your state as needing a nursing home-level of care.
- At the time you join, you're able to live safely in the community with the help of PACE services.



PACE provides coverage for prescription drugs, doctor or other health care provider visits, transportation, home care, hospital visits, and even nursing home stays whenever necessary. If you have Medicaid, you won't have to pay a monthly [premium](#) for the [long-term care](#) portion of the PACE benefit. If you have Medicare but not Medicaid, you'll be charged a monthly premium to cover the long-term care portion of the PACE benefit and a premium for Medicare Part D drugs. However, in PACE there's never a [deductible](#) or [copayment](#) for any drug, service, or care approved by the PACE team of health care professionals.

Visit [pace4you.org](https://pace4you.org) or call your State Medical Assistance (Medicaid) office to find out if you're eligible and if there's a PACE site near you.

Definitions of [blue](#) words are on pages 145–148.

## Medicare Innovation Projects

Medicare develops innovative models, **demonstrations**, and pilot projects to test and measure the effect of potential changes in Medicare. These projects help to find new ways to improve health care quality and reduce costs. Usually, they operate only for a limited time for a specific group of people and/or are offered only in specific areas. Some examples that are explained in this handbook include certain Accountable Care Organizations (see



page 136), the Comprehensive Primary Care Initiative (see page 137), and demonstration plans for people who have both Medicare and Medicaid (see page 111). Check with the model, demonstration, or pilot project (or with your health care provider) for more information about how they work. To learn more about the current Medicare models, demonstrations, and pilot projects, visit [innovation.cms.gov](https://innovation.cms.gov). You can also call 1-800-MEDICARE (1-800-633-4227). **TTY** users should call 1-877-486-2048.

Notes

Lined area for taking notes, consisting of 20 horizontal lines.

## Section 6—

# Get Information about Prescription Drug Coverage

### How does Medicare prescription drug coverage (Part D) work?

Medicare offers prescription drug coverage to everyone with Medicare. Even if you don't take many prescriptions now, you should consider joining a Medicare drug plan. If you decide not to join a Medicare drug plan when you're first eligible, and you don't have other [creditable prescription drug coverage](#), or you don't get [Extra Help](#), you'll likely pay a late enrollment penalty if you join a plan later. See pages 94–95. To get Medicare prescription drug coverage, you must join a plan run by an insurance company or other private company approved by Medicare. Each plan can vary in cost and specific drugs covered.

There are 2 ways to get Medicare prescription drug coverage:

1. **Medicare Prescription Drug Plans.** These plans (sometimes called “PDPs”) add drug coverage to Original Medicare, some Medicare Cost Plans, some Medicare Private Fee-for-Service (PFFS) plans, and Medicare Medical Savings Account (MSA) plans.
2. **Medicare Advantage Plans (like an HMO or PPO) or other [Medicare health plans](#) that offer Medicare prescription drug coverage.** You get all of your Part A, Part B, and prescription drug coverage (Part D), through these plans. Medicare Advantage Plans with prescription drug coverage are sometimes called “MA-PDs.” You must have Part A and Part B to join a Medicare Advantage Plan.

In either case, you must live in the [service area](#) of the Medicare drug plan you want to join. **Both types of plans are called “Medicare drug plans” in this handbook.**

**Important!****If you have employer or union coverage**

**Call your benefits administrator before you make any changes, or before you sign up for any other coverage.** If you drop your employer or union coverage, you may not be able to get it back. You also may not be able to drop your employer or union **drug** coverage without also dropping your employer or union **health** (doctor and hospital) coverage. If you drop coverage for yourself, you may also have to drop coverage for your spouse and dependents. If you want to know how Medicare prescription drug coverage works with other drug coverage you may have, see pages 100–102.

### When can I join, switch, or drop a Medicare drug plan?

- **When you're first eligible for Medicare**, you can join during the 7-month period that begins 3 months before the month you turn 65, includes the month you turn 65, and ends 3 months after the month you turn 65.
- **If you get Medicare due to a disability**, you can join during the 7-month period that begins 3 months before your 25th month of disability benefits and ends 3 months after your 25th month of disability. You'll have another chance to join during the 7-month period that begins 3 months before the month you turn 65 and ends 3 months after the month you turn 65.
- **Between October 15–December 7, anyone can join, switch, or drop a Medicare drug plan.** The change will take effect on January 1 as long as the plan gets your request by December 7.
- **Anytime, if you qualify for [Extra Help](#).** See page 103.

### Special Enrollment Periods

You generally must stay enrolled for the calendar year. However, in certain situations like these, you may be able to join, switch, or drop Medicare drug plans at other times if you:

- Move out of your plan's [service area](#)
- Lose other [creditable prescription drug coverage](#)
- Live in an [institution](#) (like a nursing home)
- Have Medicaid
- Qualify for Extra Help. See pages 103–107.

Definitions of [blue](#) words are on pages 145–148.





### 5-Star Special Enrollment Period

You can switch to a Medicare Prescription Drug Plan that has **5 stars for its overall star rating** from December 8, 2013 through November 30, 2014. The overall star ratings are available at [Medicare.gov/find-a-plan](http://Medicare.gov/find-a-plan). These ratings are updated each fall and can change each year. See page 81 for more information.

- You can only switch to a 5-star Medicare Prescription Drug Plan if one is available in your area.
- You can only use this Special Enrollment Period once during the time noted above.

For more information about overall star ratings, visit [Medicare.gov](http://Medicare.gov).

#### Important!

### If you have a Medicare Advantage Plan

If your Medicare Advantage Plan includes prescription drug coverage and you join a Medicare Prescription Drug Plan, you'll be disenrolled from your Medicare Advantage Plan and returned to Original Medicare.

### Don't give out personal information

**In most cases, Medicare drug plans aren't allowed to call you to enroll you in a plan.** If this happens, call 1-800-MEDICARE (1-800-633-4227) to report a plan that does this. **TTY** users should call 1-877-486-2048. Don't give your personal information to anyone who calls you to enroll in a plan.

### How do I switch?

You can switch to a new Medicare drug plan simply by joining another drug plan during one of the times listed on page 88.

**You don't need to cancel your old Medicare drug plan.** Your old Medicare drug plan coverage will end when your new drug plan begins. You should get a letter from your new Medicare drug plan telling you when your coverage with the new plan begins.

## How do I drop a Medicare drug plan?



If you want to drop your Medicare drug plan and you don't want to join a new plan, you can do so during one of the times listed on pages 88–89. You can disenroll by calling 1-800-MEDICARE (1-800-633-4227).

**TTY** users should call 1-877-486-2048.

You can also send a letter to the plan to tell them you want to disenroll. If you drop your plan and want to join another Medicare drug plan later, you have to wait for an enrollment period. You may have to pay a late enrollment penalty. See pages 94–95.

## What do I pay?

Below and continued on the next page are descriptions of what you pay in your Medicare drug plan. **Your actual drug plan costs will vary depending on:**

- Your prescriptions and whether they're on your plan's **formulary** (drug list).
- The plan you choose.
- Which pharmacy you use (preferred, non-preferred, out-of-network, or mail order).
- Whether you get **Extra Help** paying your Part D costs. See pages 103–107.

### Monthly premium

Most drug plans charge a monthly fee that varies by plan. You pay this in addition to the Part B premium. If you're in a Medicare Advantage Plan (like an HMO or PPO) or a Medicare Cost Plan that includes Medicare prescription drug coverage, the monthly premium may include an amount for prescription drug coverage.

**Note:** Contact your drug plan (not Social Security or the Railroad Retirement Board (RRB)) if you want your premium deducted from your monthly Social Security or RRB payment. If you want to stop premium deductions and get billed directly, contact your drug plan.

Definitions of **blue** words are on pages 145–148.

**Important!**

**If you have a higher income, you might pay more for your Part D coverage.** This includes Part D coverage you get from a Medicare Prescription Drug Plan, a Medicare Advantage Plan, a Medicare Cost Plan, an employer group Medicare Prescription Drug Plan, or an employer group Medicare Advantage Plan that includes Medicare prescription drug coverage. If your income is above a certain limit, you'll pay an extra amount in addition to your plan **premium**. This doesn't affect everyone, so most people won't have to pay a higher amount.

Usually, the extra amount will be deducted from your Social Security check or billed by the Railroad Retirement Board (RRB) if you get benefits from the RRB. **If you're billed the amount by Medicare or the RRB, you must pay the extra amount to Medicare or the RRB and not your plan.** If you have to pay an extra amount and you disagree (for example, you have a life event that lowers your income), call Social Security at 1-800-772-1213. **TTY** users should call 1-800-325-0778. For more information, visit [socialsecurity.gov/pubs/10536.pdf](https://www.socialsecurity.gov/pubs/10536.pdf) to view the fact sheet "Medicare Premiums: Rules for Higher-Income Beneficiaries."

**Yearly deductible**

This is the amount you must pay before your drug plan begins to pay its share of your covered drugs. Some drug plans don't have a deductible.

**Copayments or coinsurance**

These are the amounts you pay for your covered prescriptions after the deductible (if the plan has one). You pay your share and your drug plan pays its share for covered drugs. These amounts may vary.

**Coverage gap**

Most Medicare drug plans have a coverage gap (also called the "donut hole"). This means that there's a temporary limit on what the drug plan will cover for drugs. The coverage gap begins after you and your drug plan together have spent a certain amount for covered drugs. In 2014, once you enter the coverage gap, you pay 47.5% of the plan's cost for covered brand-name drugs and 72% of the plan's cost for covered generic drugs until you reach the end of the coverage gap. Not everyone will enter the coverage gap because their drug costs won't be high enough.

These items all **count** toward you getting out of the coverage gap:

- Your yearly **deductible**, **coinsurance**, and **copayments**
- The discount you get on covered brand-name drugs in the coverage gap
- What you pay in the coverage gap

The drug plan **premium** and what you pay for drugs that aren't covered **don't count** toward getting you out of the coverage gap.

Some plans offer additional coverage during the gap, like for generic drugs, but they may charge a higher monthly premium. Check with the plan first to see if your drugs would be covered during the gap.

In addition to the discount on covered brand-name prescription drugs, there will be increasing coverage for drugs in the coverage gap each year until the gap closes in 2020.

### Catastrophic coverage

Once you get out of the coverage gap, you automatically get “catastrophic coverage.” With catastrophic coverage, you only pay a small coinsurance amount or copayment for covered drugs for the rest of the year.

**Note:** If you get **Extra Help**, you won't have some of these costs. See pages 103–107.

#### NEW!

Usually, the amount you pay for a covered prescription is for a month's supply of a drug. However, starting in 2014, you can request less than a month's supply for most types of drugs. Some examples of when you might do this would be if you're trying a new medication that's known to have significant side effects or you want to synchronize the refills for all your medications. In these cases, the amount you pay is reduced based on the day's supply you actually get. Talk with your prescriber, because he or she will need to write you a prescription for this less than one month supply.

Definitions  
of **blue** words  
are on pages  
145–148.

**The example below shows costs for covered drugs in 2014 for a plan that has a coverage gap.**

Ms. Smith joins the ABC Prescription Drug Plan. Her coverage begins on January 1, 2014. She doesn't get [Extra Help](#) and uses her Medicare drug plan membership card when she buys prescriptions.

Monthly premium—Ms. Smith pays a monthly premium throughout the year			
1. Yearly deductible	2. Copayment or coinsurance (what you pay at the pharmacy)	3. Coverage gap	4. Catastrophic coverage
Ms. Smith pays the first \$310 of her drug costs before her plan starts to pay its share.	Ms. Smith pays a <a href="#">copayment</a> , and her plan pays its share for each covered drug until their combined amount (plus the <a href="#">deductible</a> ) reaches \$2,850.	Once Ms. Smith and her plan have spent \$2,850 for covered drugs, she's in the coverage gap. In 2014, she pays 47.5% of the plan's cost for her covered brand-name prescription drugs and 72% of the plan's cost for covered generic drugs. What she pays (and the discount paid by the drug company) counts as out-of-pocket spending, and helps her get out of the coverage gap.	Once Ms. Smith has spent \$4,550 out-of-pocket for the year, her coverage gap ends. Now she only pays a small <a href="#">coinsurance</a> or copayment for each covered drug until the end of the year.

### Important!

Visit the Medicare Plan Finder at [Medicare.gov/find-a-plan](https://www.medicare.gov/find-a-plan) to compare the cost of plans in your area. For help comparing plan costs, contact your State Health Insurance Assistance Program (SHIP). See pages 141–144 for the phone number. You can also call 1-800-MEDICARE (1-800-633-4227). [TTY](#) users should call 1-877-486-2048.

### What's the Part D enrollment penalty?

The late enrollment penalty is an amount that's added to your Part D [premium](#). You may owe a late enrollment penalty if at any time after your initial enrollment period is over, there's a period of 63 or more days in a row when you don't have Part D or other [creditable prescription drug coverage](#).

**Note:** If you get [Extra Help](#), you don't pay a late enrollment penalty.

#### 3 ways to avoid paying a penalty:

1. **Join a Medicare drug plan when you're first eligible.** You won't have to pay a penalty.
2. **Don't go 63 days or more in a row without a Medicare drug plan or other creditable coverage.** Creditable prescription drug coverage could include drug coverage from a current or former employer or union, TRICARE, Indian Health Service, the Department of Veterans Affairs, or health insurance coverage. Your plan must tell you each year if your drug coverage is creditable coverage. This information may be sent to you in a letter or included in a newsletter from the plan. Keep this information, because you may need it if you join a Medicare drug plan later.
3. **Tell your plan about any drug coverage you had if they ask about it.** When you join a Medicare drug plan, and the plan believes you went at least 63 days in a row without other creditable prescription drug coverage, the plan will send you a letter. The letter will include a form asking about any drug coverage you had. Complete the form, and return it to your drug plan. If you don't tell the plan about your creditable prescription drug coverage, you may have to pay a penalty.

### How much more will I pay?

The cost of the late enrollment penalty depends on how long you didn't have **creditable prescription drug coverage**. Currently, the late enrollment penalty is calculated by multiplying 1% of the "national base beneficiary **premium**" (\$31.17 in 2013) times the number of full, uncovered months that you were eligible but didn't join a Medicare drug plan and went without other creditable prescription drug coverage. The final amount is rounded to the nearest \$.10 and added to your monthly premium. Since the "national base beneficiary **premium**" may increase each year, the penalty amount may also increase each year. You may have to pay this penalty for as long as you have a Medicare drug plan.

**Example:** Mrs. Jones didn't join when she was first eligible—by May 1, 2009. She joined a Medicare drug plan with an effective date of January 1, 2013. Since Mrs. Jones didn't join when she was first eligible and went without other creditable drug coverage for 43 months (June 2009–December 2012), she'll be charged a monthly penalty of \$13.40 in 2013 ( $\$31.17 \times .01 = \$.3117 \times 43 = \$13.40$ ) in addition to her plan's monthly premium.

After you join a Medicare drug plan, the plan will tell you if you owe a penalty and what your premium will be.

### What if I don't agree with the penalty?

If you don't agree with your late enrollment penalty, you can ask for a review or reconsideration. You'll need to fill out a reconsideration request form (that your Medicare drug plan will send you), and you'll have the chance to provide proof that supports your case, like information about previous creditable prescription drug coverage. If you need help, call your plan. You can also contact your State Health Insurance Assistance Program (SHIP). See pages 141–144 for the phone number.

Definitions  
of **blue** words  
are on pages  
145–148.

## What drugs are covered?

Information about a plan’s list of covered drugs (called a **formulary**) isn’t included in this handbook because each plan has its own formulary. Many Medicare drug plans place drugs into different “tiers” on their formularies. Drugs in each tier have a different cost. For example, a drug in a lower tier will generally cost you less than a drug in a higher tier. In some cases, if your drug is in a higher tier and your prescriber (your doctor or other health care provider who is legally allowed to write prescriptions) thinks you need that drug instead of a similar drug in a lower tier, you or your prescriber can ask your plan for an exception to get a lower **copayment**.



Contact the plan for its current formulary, or visit the plan’s website. You can also visit the Medicare Plan Finder at [Medicare.gov/find-a-plan](https://www.medicare.gov/find-a-plan), or call 1-800-MEDICARE (1-800-633-4227). **TTY** users should call 1-877-486-2048. Your plan will notify you of any formulary changes.

**Note:** Medicare drug plans must cover all **medically necessary**, commercially available vaccines not already covered under Part B (like the shingles vaccine).

### Important!

Each month that you fill a prescription, your drug plan mails you an “Explanation of Benefits” (EOB) notice. This notice gives you a summary of your prescription drug claims and your costs. Review your notice and check it for mistakes. Contact your plan if you have questions or find mistakes. If you suspect fraud, call the Medicare Drug Integrity Contractor (MEDIC) at 1-877-7SAFERX (1-877-772-3379). See page 124 for more information about the MEDIC.

Definitions of **blue** words are on pages 145–148.



**Plans may have these coverage rules:**

- **Prior authorization**—You and/or your prescriber must contact the drug plan before you can fill certain prescriptions. Your prescriber may need to show that the drug is **medically necessary** for the plan to cover it.
- **Quantity limits**—Limits on how much medication you can get at a time.
- **Step therapy**—You must try one or more similar, lower cost drugs before the plan will cover the prescribed drug.

**If you or your prescriber believe that one of these coverage rules should be waived, you can ask for an exception.** See page 116.

**Note:** In most cases, the prescription drugs (sometimes called “self-administered drugs” or drugs you would usually take on your own) you get in an outpatient setting, like an emergency department, or during observation services, aren’t covered by Part B. Your Medicare drug plan may cover these drugs under certain circumstances. You’ll likely need to pay out-of-pocket for these drugs and submit a claim to your drug plan for a refund. Or, if you get a bill for self-administered drugs you got in a doctor’s office, call your Medicare drug plan (Part D) for more information.

Visit [Medicare.gov/publications](https://www.Medicare.gov/publications) to view the fact sheet, “How Medicare Covers Self-Administered Drugs Given in Hospital Outpatient Settings.” You can also call 1-800-MEDICARE (1-800-633-4227) to find out if a copy can be mailed to you. **TTY** users should call 1-877-486-2048.

**NEW!****Do you get automatic refills of your prescriptions by mail?**

Some people with Medicare get their prescription drugs by using an “automatic refill” service that automatically delivers prescription drugs when you’re about to run out. However, in the past, some prescription drug plans weren’t checking to see if customers still wanted or needed a prescription drug. Since pharmacies can’t restock the prescription drug if it’s sent through the mail and generally won’t cancel the order, you can’t return unwanted refills or get a refund.

This means some automatic delivery services were creating waste and unnecessary costs for people with Medicare and the Part D program.

By January 2014, to make sure you still need a prescription before they send you a refill, prescription drug plans should get your approval to deliver a prescription, new or refill, before each delivery, except when you ask for the refill or request a new prescription. This may be a change for you if you’ve always used mail-order and haven’t had the opportunity to confirm your need for refills. Be sure to give your drug plan the best way to reach you so you don’t miss the refill confirmation call or other communication. The plan won’t automatically ship your refills unless you confirm you still want to get the order. This new policy won’t affect refill reminder programs where you go in person to pick-up the prescription and it won’t apply to long-term care pharmacies that give out and deliver prescription drugs.

**Medication Therapy Management Program (MTM)**

If you’re in a Medicare drug plan and take medications for different medical conditions, you may be eligible to get services, at no cost to you, through a MTM program. This program helps you and your doctor make sure that your medications are working to improve your health. A pharmacist or other health professional will give you a comprehensive review of all your medications and talk with you about:

- How to get the most benefit from the drugs you take
- Any concerns you have, like medication costs and drug reactions
- How best to take your medications
- Any questions or problems you have about your prescription and over-the-counter medication

Definitions  
of blue words  
are on pages  
145–148.

You'll get a written summary of this discussion. The summary has a medication action plan that recommends what you can do to make the best use of your medications, with space for you to take notes or write down any follow-up questions. You'll also get a personal medication list that will include all the medications you're taking and why you take them. Have this summary available when you talk with your health care providers.



It's a good idea to schedule your medication review before your yearly "Wellness" visit, so you can talk to your doctor about your action plan and medication list. Bring your action plan and medication list with you to your visit or anytime you talk with your doctors, pharmacists, and other health care providers. Also, take your medication list with you if you go to the hospital or emergency room.

**Your drug plan may enroll you in this program if you meet all of these conditions:**

1. You have more than one chronic health condition.
2. You take several different medications.
3. Your medications have a combined cost of more than \$3,017 per year. This dollar amount (which can change each year) is estimated based on your out-of-pocket costs and the costs your plan pays for the medications each calendar year. Your plan can help you find out if you may reach this dollar limit.

Visit [Medicare.gov/find-a-plan](https://www.Medicare.gov/find-a-plan) to get general information about program eligibility for your Medicare drug plan or for other plans that interest you. Contact each drug plan for specific details.

## How do other insurance and programs work with Part D?

The charts on the next 2 pages provide information about how other insurance you have works with, or is affected by, Medicare prescription drug coverage (Part D).

**Employer or union health coverage**—Health coverage from your, your spouse's, or other family member's current or former employer or union. If you have prescription drug coverage based on your current or previous employment, your employer or union will notify you each year to let you know if your prescription drug coverage is creditable. **Keep the information you get.** Call your benefits administrator for more information before making any changes to your coverage. **Note:** If you join a Medicare drug plan, you, your spouse, or your dependents may lose your employer or union health coverage.

**COBRA**—A federal law that may allow you to temporarily keep employer or union health coverage after the employment ends or after you lose coverage as a dependent of the covered employee. As explained on pages 22–23, there may be reasons why you should take Part B instead of, or in addition to, COBRA coverage. However, if you take COBRA and it includes **creditable prescription drug coverage**, you'll have a Special Enrollment Period to join a Medicare drug plan without paying a penalty when the COBRA coverage ends. Talk with your State Health Insurance Assistance Program (SHIP) to see if COBRA is a good choice for you. See pages 141–144 for the phone number.

**Medicare Supplement Insurance (Medigap) policy with prescription drug coverage**—You may choose to join a Medicare drug plan because most Medigap drug coverage isn't creditable, and you may pay more if you join a drug plan later. See pages 94–95. Medigap policies can no longer be sold with prescription drug coverage, but if you have drug coverage under a current Medigap policy, you can keep it. If you join a Medicare drug plan, tell your Medigap insurance company so they can remove the prescription drug coverage under your Medigap policy and adjust your **premiums**. Call your Medigap insurance company for more information.

**Note:** Keep any creditable prescription drug coverage information you get from your plan. You may need it if you decide to join a Medicare drug plan later. Don't send creditable coverage letters or certificates to Medicare.

## How does other government insurance work with Part D?

The types of insurance listed on this page are all considered [creditable prescription drug coverage](#). If you have one of these types of insurance, in most cases, it will be to your advantage to keep your current coverage.

**Federal Employee Health Benefits (FEHB) Program**—Health coverage for current and retired federal employees and covered family members. FEHB plans usually include prescription drug coverage, so you don't need to join a Medicare drug plan. However, if you decide to join a Medicare drug plan, you can keep your FEHB plan, and in most cases the [Medicare plan](#) will pay first. For more information, visit [opm.gov/insure](http://opm.gov/insure) or contact the Office of Personnel Management at 1-888-767-6738. TTY users should call 1-800-878-5707. You can also call your plan if you have questions.

**Veterans' benefits**—Health coverage for veterans and people who have served in the U.S. military. You may be able to get prescription drug coverage through the U.S. Department of Veterans Affairs (VA) program. You may join a Medicare drug plan, but if you do, you can't use both types of coverage for the same prescription at the same time. For more information, visit [va.gov](http://va.gov), or call the VA at 1-800-827-1000. TTY users should call 1-800-829-4833.

**TRICARE (military health benefits)**—Health care plan for active-duty service members, military retirees, and their families. **Most people with TRICARE who are entitled to Part A must have Part B to keep TRICARE prescription drug benefits.** If you have TRICARE, you don't need to join a Medicare Prescription Drug Plan. However, if you do, your Medicare drug plan pays first and TRICARE pays second. If you join a Medicare Advantage Plan (like an HMO or PPO) with prescription drug coverage, your Medicare Advantage Plan and TRICARE may coordinate their benefits if your Medicare Advantage Plan network pharmacy is also a TRICARE network pharmacy. Otherwise, you can file your own claim to get paid back for your out-of-pocket expenses. For more information, visit [tricare.mil](http://tricare.mil), or call the TRICARE Pharmacy Program at 1-877-363-1303. TTY users should call 1-877-540-6261.

**Indian Health Services (IHS)**—Health care services for American Indians and Alaska Natives. Many Indian health facilities participate in the Medicare prescription drug program. If you get prescription drugs through an Indian health facility, you'll continue to get drugs at no cost to you and your coverage won't be interrupted. Joining a Medicare drug plan may help your Indian health facility because the drug plan pays the Indian health facility for the cost of your prescriptions. Talk to your local Indian health benefits coordinator who can help you choose a plan that meets your needs and tell you how Medicare works with the Indian health care system.



**Note:** If you're getting care through an IHS or tribal health facility or program without being charged, you can continue to do so for some or all of your care. Getting Medicare doesn't affect your ability to get services through the IHS and tribal health facilities.

## Section 7—

# Get Help Paying Your Health & Prescription Drug Costs

### What if I need help paying my Medicare prescription drug costs?

If you have limited income and resources, you may qualify for help to pay for some health care and prescription drug costs.

**Note:** [Extra Help](#) isn't available in Puerto Rico, the U.S. Virgin Islands, Guam, the Northern Mariana Islands, and American Samoa. See page 112 for information about programs that are available in those areas.

**Extra Help is a Medicare program to help people with limited income and resources pay Medicare prescription drug costs.** You may qualify for Extra Help, also called the low-income subsidy (LIS), if your yearly income and resources are below these limits in 2013:

- Single person—Income less than \$17,235 and resources less than \$13,300 per year
- Married person living with a spouse and no other dependents—Income less than \$23,265 and resources less than \$26,580 per year

These amounts may change in 2014. You may qualify even if you have a higher income (like if you still work, live in Alaska or Hawaii, or have dependents living with you). Resources include money in a checking or savings account, stocks, bonds, mutual funds, and Individual Retirement Accounts (IRAs). Resources **don't** include your home, car, household items, burial plot, up to \$1,500 for burial expenses (per person), or life insurance policies.

Definitions of [blue](#) words are on pages 145–148.

If you qualify for **Extra Help** and join a Medicare drug plan, you'll:

- Get help paying your Medicare drug plan's monthly **premium**, yearly **deductible**, **coinsurance**, and **copayments**.
- Have no coverage gap.
- Have no late enrollment penalty.
- Be able to switch plans at any time.

**You automatically qualify for Extra Help if you have Medicare and meet any of these conditions:**

- You have full Medicaid coverage.
- You get help from your state Medicaid program paying your Part B premiums (in a Medicare Savings Program). See pages 108–109.
- You get Supplemental Security Income (SSI) benefits.

To let you know you automatically qualify for Extra Help, Medicare will mail you a purple letter that you should keep for your records. You don't need to apply for Extra Help if you get this letter.

- If you aren't already in a Medicare drug plan, you must join one to use this Extra Help.
- If you don't join a Medicare drug plan, Medicare may enroll you in one so that you'll be able to use the Extra Help. If Medicare enrolls you in a plan, you'll get a yellow or green letter letting you know when your coverage begins.
- Different plans cover different drugs. Check to see if the plan you're enrolled in covers the drugs you use and if you can go to the pharmacies you want. Visit [Medicare.gov/find-a-plan](https://www.Medicare.gov/find-a-plan), or call 1-800-MEDICARE (1-800-633-4227) to compare with other plans in your area. **TTY** users should call 1-877-486-2048.
- If you're getting Extra Help, you can switch to another Medicare drug plan anytime. Your new coverage will be effective the first day of the next month.
- If you have Medicaid and live in certain **institutions** (like a nursing home) or get home- and community-based services, you pay nothing for your covered prescription drugs.

Definitions of **blue** words are on pages 145–148.



**If you don't want to join a Medicare drug plan** (for example, because you want only your employer or union coverage), call the plan listed in your letter, or call 1-800-MEDICARE (1-800-633-4227). TTY users should call 1-877-486-2048. Tell them you don't want to be in a Medicare drug plan (you want to “opt out”). If you continue to qualify for **Extra Help** or if your employer or union coverage is **creditable prescription drug coverage**, you won't have to pay a penalty if you join later.

**Important!**

If you have employer or union coverage and you join a Medicare drug plan, you may lose your employer or union coverage even if you qualify for Extra Help. Call your employer's benefits administrator before you join.

**If you didn't automatically qualify for Extra Help, you can apply at anytime:**

- Visit [socialsecurity.gov/i1020](http://socialsecurity.gov/i1020) to apply online.
- Call Social Security at 1-800-772-1213 to apply for Extra Help by phone or to get a paper application. TTY users should call 1-800-325-0778.
- Visit your State Medical Assistance (Medicaid) office. Visit [Medicare.gov/contacts](http://Medicare.gov/contacts), or call 1-800-MEDICARE to get the phone number.

**Note:** With your consent, Social Security will forward information to the Medicaid office in your state to start an application for a Medicare Savings Program. See pages 108–109.



Drug costs in 2014 for most people who qualify will be no more than \$2.55 for each generic drug and \$6.35 for each brand-name drug. Look on the Extra Help letters you get, or contact your plan to find out your exact costs.

To get answers to your questions about Extra Help and help choosing a drug plan, call your State Health Insurance Assistance Program (SHIP). See pages 141–144 for the phone number. You can also call 1-800-MEDICARE.

## Paying the right amount

Medicare gets information from your state or Social Security that tells whether you qualify for [Extra Help](#). If Medicare doesn't have the right information, you may be paying the wrong amount for your prescription drug coverage.

If you automatically qualify for Extra Help, you can show your drug plan the colored letter you got from Medicare as proof that you qualify. If you applied for Extra Help, you can show your “Notice of Award” from Social Security as proof that you qualify.

You can also give your plan any of the documents listed in the chart below (also called “Best Available Evidence”) as proof that you qualify for Extra Help. **Your plan must accept these documents.** Each item must show that you were eligible for Medicaid during a month after June of 2013.

Proof you have Medicaid and live in an institution or get home and community-based services	Other proof you have Medicaid
<ul style="list-style-type: none"> <li>▪ A bill from the <a href="#">institution</a> (like a nursing home) or a copy of a state document showing Medicaid payment to the institution for at least a month</li> <li>▪ A print-out from your state's Medicaid system showing that you lived in the institution for at least a month</li> <li>▪ A document from your state that shows you have Medicaid and are getting home and community-based services</li> </ul>	<ul style="list-style-type: none"> <li>▪ A copy of your Medicaid card (if you have one)</li> <li>▪ A copy of a state document that shows you have Medicaid</li> <li>▪ A print-out from a state electronic enrollment file or from your state's Medicaid system that shows you have Medicaid</li> <li>▪ Any other document from your state that shows you have Medicaid</li> </ul>

Definitions of [blue](#) words are on pages 145–148.

If you aren't already enrolled in a Medicare drug plan and paid for prescriptions since you qualified for [Extra Help](#), you may be able to get back part of what you paid. **Keep your receipts**, and call Medicare's Limited Income Newly Eligible Transition (NET) Program at 1-800-783-1307 for more information. [TTY](#) users should call 711.



For more information, visit [Medicare.gov/publications](https://www.medicare.gov/publications) to view the fact sheet “If You Get Extra Help, Make Sure You’re Paying the Right Amount.” You can also call 1-800-MEDICARE (1-800-633-4227) to find out if a copy can be mailed to you. [TTY](#) users should call 1-877-486-2048.

**Note:** Keep all information you get from Medicare, Social Security, the Railroad Retirement Board (RRB), your [Medicare plan](#), Medicare Supplement Insurer, employer, or union. This may include notices of award or denial, “Annual Notices of Change,” notices of [creditable prescription drug coverage](#), or “Medicare Summary Notices.” You may need these documents to apply for the programs explained in this section. Also keep copies of all applications you submit.

## What if I need help paying my Medicare health care costs?

### Medicare Savings Programs

If you have limited income and resources, you may be able to get help from your state to pay your Medicare costs if you meet certain conditions.

There are 4 kinds of Medicare Savings Programs:

1. **Qualified Medicare Beneficiary (QMB) Program**—Helps pay for Part A and/or Part B premiums, deductibles, coinsurance, and copayments.
2. **Specified Low-Income Medicare Beneficiary (SLMB) Program**—Helps pay Part B premiums only.
3. **Qualifying Individual (QI) Program**—Helps pay Part B premiums only. You must apply each year for QI benefits and the applications are granted on a first-come first-served basis.
4. **Qualified Disabled and Working Individuals (QDWI) Program**—Helps pay Part A premiums only. You may qualify for this program if you have a disability and are working.

#### Important!

The names of these programs and how they work may vary by state. Medicare Savings Programs aren't available in Puerto Rico and the U.S. Virgin Islands.

### How do I qualify?

In most cases, to qualify for a Medicare Savings Program, you must have:

- Part A
- Monthly income less than \$1,313 and resources less than \$7,080—one person
- Monthly income less than \$1,765 and resources less than \$10,620—married and living together

Definitions of blue words are on pages 145–148.

**Note:** The amounts on page 108 are for 2013 and may change each year. Many states figure your income and resources differently, so you may qualify in your state even if your income or resources are higher than the amounts listed on page 108. If you have income from working, you may qualify for benefits even if your income is higher than the limits above. Resources include money in a checking or savings account, stocks, bonds, mutual funds, and Individual Retirement Accounts (IRAs). Resources **don't** include your home, car, burial plot, burial expenses up to your state's limit, furniture, or other household items. Some states don't have any limits on resources.

### **For more information**

- Call or visit your State Medical Assistance (Medicaid) office, and ask for information on Medicare Savings Programs. Call if you think you qualify for any of these programs, even if you aren't sure. To get the phone number for your state, visit [Medicare.gov/contacts](http://Medicare.gov/contacts). You can also call 1-800-MEDICARE (1-800-633-4227), and say "Medicaid." **TTY** users should call 1-877-486-2048.
- Visit [Medicare.gov/publications](http://Medicare.gov/publications) to view the brochure "Get Help With Your Medicare Costs: Getting Started." You can also call 1-800-MEDICARE to find out if a copy can be mailed to you.
- Contact your State Health Insurance Assistance Program (SHIP). See pages 141–144 for the phone number.

## Medicaid

Medicaid is a joint federal and state program that helps pay medical costs if you have limited income and resources and meet other requirements. Some people qualify for both Medicare and Medicaid and are called “dual eligibles.”

### What does Medicaid cover?

- If you have Medicare and full Medicaid coverage, most of your health care costs are covered. You can get your Medicare coverage through Original Medicare or a Medicare Advantage Plan (like an HMO or PPO).
- If you have Medicare and full Medicaid coverage, Medicare covers your Part D prescription drugs. Medicaid may still cover some drugs and other care that Medicare doesn't cover.
- People with Medicaid may get coverage for services that Medicare may not or may partially cover, like nursing home care, personal care, and home- and community-based services.

### How do I qualify?

- Medicaid programs vary from state to state. They may also have different names, like “Medical Assistance” or “Medi-Cal.”
- Each state has different income and resource requirements.
- In some states, you may need Medicare to be eligible for Medicaid.
- Call your State Medical Assistance (Medicaid) office for more information and to see if you qualify. Visit [Medicare.gov/contacts](https://www.Medicare.gov/contacts) or call 1-800-MEDICARE (1-800-633-4227), and say “Medicaid” to get the phone number. TTY users should call 1-877-486-2048.

### **Demonstration plans for people who have both Medicare and Medicaid**

Medicare is working with several states and health plans to create **demonstration** plans for certain people who have both Medicare and Medicaid, called Medicare-Medicaid Plans. These plans include all your Medicare and Medicaid benefits, prescription drug coverage. They're designed to help better coordinate your benefits. If you're interested in joining a Medicare-Medicaid Plan, visit [Medicare.gov/find-a-plan](https://www.Medicare.gov/find-a-plan) to see if one is available in your area and if you qualify. Call your State Medical Assistance (Medicaid) office for more information. Visit [Medicare.gov/contacts](https://www.Medicare.gov/contacts), or call 1-800-MEDICARE (1-800-633-4227), and say "Medicaid" to get the phone number. **TTY** users should call 1-877-486-2048.

### **State Pharmacy Assistance Programs (SPAPs)**



Many states have SPAPs that help certain people pay for prescription drugs based on financial need, age, or medical condition. Each SPAP makes its own rules on how to provide drug coverage to its members. To find out if there's an SPAP in your state and how it works, call your State Health Insurance Assistance Program (SHIP). See pages 141–144 for the phone number.

### **Pharmaceutical Assistance Programs (also called Patient Assistance Programs)**

Many major drug manufacturers offer assistance programs for people with Medicare drug coverage who meet certain requirements. Visit [Medicare.gov/pap/index.asp](https://www.Medicare.gov/pap/index.asp) to learn more about Pharmaceutical Assistance Programs.

### **Programs of All-inclusive Care for the Elderly (PACE)**

PACE is a Medicare and Medicaid program offered in many states that allows people who need a nursing home-level of care to remain in the community. See page 84 for more information.

## Supplemental Security Income (SSI) benefits

SSI is a cash benefit paid by Social Security to people with limited income and resources who are disabled, blind, or 65 or older. SSI benefits help people meet basic needs for food, clothing, and shelter. SSI benefits aren't the same as Social Security benefits.

You can visit [socialsecurity.gov](https://www.socialsecurity.gov), and use the “Benefit Eligibility Screening Tool” to find out if you're eligible for SSI or other benefits. Call Social Security at 1-800-772-1213 or contact your local Social Security office for more information. TTY users should call 1-800-325-0778.

**Note:** People who live in Puerto Rico, the U.S. Virgin Islands, Guam, or American Samoa can't get SSI.

## Programs for people who live in the U.S. territories

There are programs in Puerto Rico, the U.S. Virgin Islands, Guam, the Northern Mariana Islands, and American Samoa to help people with limited income and resources pay their Medicare costs. Programs vary in these areas. Call your local Medical Assistance (Medicaid) office to learn more, or call 1-800-MEDICARE (1-800-633-4227) and say “Medicaid” for more information. TTY users should call 1-877-486-2048.

## Children's Health Insurance Program (CHIP)

Do you have children or grandchildren who need health insurance? CHIP provides low-cost health insurance coverage to children in families who earn too much income to qualify for Medicaid, but not enough to buy private health



insurance. Each state has its own program, with its own eligibility rules. Visit [insurekidsnow.gov](https://insurekidsnow.gov) or call 1-877-KIDS-NOW (1-877-543-7669) for more information about CHIP in your state.

Definitions  
of blue words  
are on pages  
145–148.



## Section 8—

# Know Your Rights & How to Protect Yourself from Fraud

### What are my Medicare rights?

No matter how you get your Medicare, you have certain rights and protections. All people with Medicare have the right to:

- Be treated with dignity and respect at all times
- Be protected from discrimination
- Have your personal and health information kept private
- Get information in a way you understand from Medicare, health care providers, and Medicare contractors
- Have questions about Medicare answered
- Have access to doctors, other health care providers, specialists, and hospitals
- Learn about your treatment choices in clear language that you can understand, and participate in treatment decisions
- Get emergency care when and where you need it
- Get a decision about health care payment, coverage of services, or prescription drug coverage
- Request a review (appeal) of certain decisions about health care payment, coverage of services, or prescription drug coverage
- File complaints (sometimes called grievances), including complaints about the quality of your care

### What if my plan stops participating in Medicare?

Medicare health and prescription drug plans can decide not to participate in Medicare for the coming year. Plans that choose to leave Medicare entirely or in certain areas are “non-renewing.” In these cases, your coverage under the plan will end after December 31. The plan will send you a letter about your options before Open Enrollment. You can always choose another plan between October 15–December 7. Your coverage will begin January 1. If your plan is non-renewing for the next year, you’ll also have a special right to join another [Medicare plan](#) until February 28, 2014.

If you want to continue to have Medicare prescription drug coverage (Part D) or a Medicare Advantage Plan (like an HMO or PPO), without any interruption in coverage, you’ll need to join a new plan by December 31. If you **don’t** join a new Medicare Advantage Plan by December 31, you’ll continue to have Medicare coverage through Original Medicare on January 1, but if you don’t join a Medicare drug plan by that date, you won’t have Medicare drug coverage.

- Generally, if you’re in a [Medicare health plan](#), you’ll automatically return to Original Medicare if you don’t choose to join another Medicare health plan. You’ll also have the right to buy certain Medigap policies within 63 days after your plan coverage ends. If you return to Original Medicare, you can also join a Medicare Prescription Drug Plan.
- If you’re in a Medicare drug plan, you’ll have the right to join another Medicare drug plan or a Medicare health plan with drug coverage. If you don’t join a new plan, you won’t have Medicare drug coverage.

### What’s an appeal?

An appeal is the action you can take if you disagree with a coverage or payment decision by Medicare or your Medicare plan. For example, you can appeal if Medicare or your plan denies:

- A request for a health care service, supply, item, or prescription drug that you think you should be able to get.
- A request for payment of a health care service, supply, item, or prescription drug you already got.
- A request to change the amount you must pay for a health care service, supply, item, or prescription drug.

Definitions of [blue](#) words are on pages 145–148.



You can also appeal if Medicare or your plan stops providing or paying for all or part of an item or service you think you still need.

If you decide to file an appeal, you can ask your doctor or other health care provider or supplier for any information that may help your case. Keep a copy of everything you send to Medicare as part of your appeal.

### How do I file an appeal?

How you file an appeal depends on the type of Medicare coverage you have:

#### If you have Original Medicare

1. Get the “Medicare Summary Notice” (MSN) that shows the item or service you’re appealing. Your MSN is the notice you get every 3 months that lists all the services billed to Medicare and tells you if Medicare paid for the services. See pages 63–64.
2. Circle the item(s) you disagree with on the MSN, and write an explanation of why you disagree with the decision on the MSN or on a separate piece of paper and attach it to the MSN.
3. Include your name, phone number, and Medicare number on the MSN and sign it. Keep a copy for your records.
4. Send the MSN, or a copy, to the company that handles bills for Medicare listed on the MSN. You can include any other additional information you have about your appeal. Or you can use CMS Form 20027, and file it with the Medicare contractor at the address listed on the MSN. To view or print this form, visit [cms.gov/cmsforms/downloads/cms20027.pdf](https://www.cms.gov/cmsforms/downloads/cms20027.pdf), or call 1-800-MEDICARE (1-800-633-4227) to find out if a copy can be mailed to you. TTY users should call 1-877-486-2048.
5. You must file the appeal within 120 days of the date you get the MSN in the mail.

You’ll generally get a decision from the Medicare contractor within 60 days after they get your request. If Medicare will cover the item(s) or service(s), it will be listed on your next MSN.

**If you have a Medicare health plan**

Learn how to file an appeal by looking at the materials your plan sends you, calling your plan, or visiting [Medicare.gov/appeals](https://www.Medicare.gov/appeals).

In some cases, you can file a fast appeal. See materials from your plan and pages 117–118.

**If you have a Medicare Prescription Drug Plan**

You have the right to do all of the following (even before you buy a certain drug):

- Get a written explanation (called a “coverage determination”) from your Medicare drug plan. A coverage determination is the first decision made by your Medicare drug plan (not the pharmacy) about your benefits, including whether a certain drug is covered, whether you’ve met the requirements to get a requested drug, how much you pay for a drug, and whether to make an exception to a plan rule when you request it.
- Ask for an exception if you or your prescriber (your doctor or other health care provider who is legally allowed to write prescriptions) believes you need a drug that isn’t on your plan’s [formulary](#).
- Ask for an exception if you or your prescriber believes that a coverage rule (like prior authorization) should be waived.
- Ask for an exception if you think you should pay less for a higher tier (more expensive) drug because you or your prescriber believes you can’t take any of the lower tier (less expensive) drugs for the same condition.

**How do I ask for a coverage determination?**

You or your prescriber must contact your plan to ask for a coverage determination or an exception. If your network pharmacy can’t fill a prescription, the pharmacist will give you a notice that explains how to contact your Medicare drug plan so you can make your request. If the pharmacist doesn’t give you this notice, ask for a copy.

Definitions  
of [blue](#) words  
are on pages  
145–148.

You or your prescriber may make a standard request by phone or in writing, if you're asking for prescription drug benefits you haven't gotten yet. If you're asking to get paid back for prescription drugs you already bought, your plan can require you or your prescriber to make the standard request in writing.

You or your prescriber can call or write your plan for an expedited (fast) request. Your request will be expedited if you haven't gotten the prescription and your plan determines, or your prescriber tells your plan, that your life or health may be at risk by waiting.

**Important!**

If you're requesting an exception, your prescriber must provide a statement explaining the medical reason why the exception should be approved.

**How can I get help filing an appeal?**

For more information about the different levels of appeals, visit [Medicare.gov/appeals](https://www.Medicare.gov/appeals). You can also get help filing an appeal from your State Health Insurance Assistance Program (SHIP). See pages 141–144 for the phone number.

**What are my rights if I think my services are ending too soon?**

If you're getting Medicare services from a hospital, skilled nursing facility, home health agency, comprehensive outpatient rehabilitation facility, or hospice, and you think your Medicare-covered services are ending too soon, you can ask for a fast appeal. Your provider will give you a notice before your services end that will tell you how to ask for a fast appeal. You should read this notice carefully. If you don't get this notice, ask your provider for it.

**How do I ask for a fast appeal?**

With a fast appeal, an independent reviewer, called a [Quality Improvement Organization \(QIO\)](#), will decide if your services should continue.

- It's important to call your QIO to request a fast appeal no later than the time shown on the notice you get from your provider. Use the phone number for your QIO listed on your notice to request your appeal.

- Ask your doctor or other health care provider to submit any information to the QIO that may help your case.
- If you miss the deadline, you may still have appeal rights:
  - If you have Original Medicare, call your QIO.
  - If you're in a [Medicare health plan](#), call your plan.

## What's an "Advance Beneficiary Notice of Noncoverage" (ABN)?

If you have Original Medicare, your doctor, other health care provider, or supplier may give you a notice called an "Advance Beneficiary Notice of Noncoverage" (ABN). This notice says Medicare probably (or certainly) won't pay for some services in certain situations.

### What happens if I get an ABN?

- You'll be asked to choose whether to get the items or services listed on the ABN.
- If you choose to get the items or services listed on the ABN, you're agreeing to pay if Medicare doesn't.
- You'll be asked to sign the ABN to say that you've read and understood it.
- Doctors, other health care providers, and suppliers don't have to (but still may) give you an ABN for services that Medicare never covers. See page 56.
- An ABN isn't an official denial of coverage by Medicare. You could choose to get the items listed on the ABN and still ask your health care provider or supplier to submit the claim to Medicare or another insurer. If Medicare denies payment, you can still file an appeal. However, you'll have to pay for the items or services if Medicare determines that the items or services aren't covered (and no other insurer is responsible for payment).

Definitions  
of [blue](#) words  
are on pages  
145–148.

### Can I get an ABN for other reasons?

- You may get a Home Health ABN for other reasons, like when your doctor or other health care provider makes changes to or reduces your home health care.
- You may get a Skilled Nursing Facility ABN when the facility believes Medicare will no longer cover your stay or other items and services.
- You may get an ABN if you're getting equipment or supplies that are in the DMEPOS Competitive Bidding Program and the supplier isn't a contract supplier.

### What if I didn't get an ABN?

If your provider was required to give you an ABN but didn't, in most cases your provider must pay you back what you paid for the item or service.

### Where can I get more information about appeals and ABNs?

- Visit [Medicare.gov/publications](https://www.medicare.gov/publications) to view the booklet "Medicare Appeals." You can also call 1-800-MEDICARE (1-800-633-4227) to find out if a copy can be mailed to you. TTY users should call 1-877-486-2048.
- If you're in a [Medicare plan](#), call your plan to find out if a service or item will be covered.

## How does Medicare use my personal information?

Medicare protects the privacy of your health information. The next 2 pages describe how your information may be used and given out by law and explain how you can get this information.

## Notice of Privacy Practices for Original Medicare

**This notice describes how medical information about you may be used and disclosed and how you can get access to this information. Please review it carefully.**

By law, Medicare is required to protect the privacy of your personal medical information. Medicare is also required to give you this notice to tell you how Medicare may use and give out (“disclose”) your personal medical information held by Medicare.

Medicare must use and give out your personal medical information to provide information:

- To you, someone you name (“designate”), or someone who has the legal right to act for you (your personal representative)
- To the Secretary of the Department of Health and Human Services, if necessary, to make sure your privacy is protected
- Where required by law

Medicare has the right to use and give out your personal medical information to pay for your health care and to operate the Medicare Program. Examples include:

- Companies that pay bills for Medicare use your personal medical information to pay or deny your claims, to collect your **premiums**, to share your payment information with your other insurer(s), or to prepare your “Medicare Summary Notice.”
- Medicare may use your personal medical information to make sure you and other people with Medicare get quality health care, to provide customer service to you, to resolve any complaints you have, or to contact you about research studies.

Medicare may use or give out your personal medical information for these purposes under limited circumstances:

- Where allowed by federal law to state and other federal agencies that need Medicare data for their program operations (like to make sure Medicare is making proper payments or to coordinate benefits between programs)
- To your health care providers so they know what other treatments you’ve gotten and to coordinate your care (for example, for programs to ensure the delivery of quality health care)
- For public health activities (like reporting disease outbreaks)
- For government health care oversight activities (like fraud and abuse investigations)
- For judicial and administrative proceedings (like in response to a court order)
- For law enforcement purposes (like providing limited information to locate a missing person)
- For research studies, including surveys, that meet all privacy law requirements (like research related to the prevention of disease or disability)
- To avoid a serious and imminent threat to health or safety
- To contact you about new or changed coverage under Medicare
- To create a collection of information that can no longer be traced back to you



By law, Medicare must have your written permission (an “authorization”) to use or give out your personal medical information for any purpose that isn’t set out in this notice. Medicare will not sell or market your personal medical information without your written permission. You may take back (“revoke”) your written permission anytime, except to the extent that Medicare has already acted based on your permission.

By law, you have the right to:

- See and get a copy of your personal medical information held by Medicare.
- Have your personal medical information amended if you believe that it is wrong or if information is missing, and Medicare agrees. If Medicare disagrees, you may have a statement of your disagreement added to your personal medical information.
- Get a listing of those getting your personal medical information from Medicare. The listing won’t cover your personal medical information that was given to you or your personal representative, that was given out to pay for your health care or for Medicare operations, or that was given out for law enforcement purposes if it would likely get in the way of these purposes.
- Ask Medicare to communicate with you in a different manner or at a different place (for example, by sending materials to a P.O. Box instead of your home address).
- Ask Medicare to limit how your personal medical information is used and given out to pay your claims and run the Medicare Program. Please note that Medicare may not be able to agree to your request.
- Be told about any breach of your personal medical information.
- Get a separate paper copy of this notice.

Visit [Medicare.gov](http://Medicare.gov) for more information on:

- Exercising your rights set out in this notice.
- Filing a complaint, if you believe Original Medicare has violated these privacy rights. Filing a complaint won’t affect your coverage under Medicare.

You can also call 1-800-MEDICARE (1-800-633-4227) to get this information. Ask to speak to a customer service representative about Medicare’s privacy notice. TTY users should call 1-877-486-2048.

You may file a complaint with the Secretary of the Department of Health and Human Services. Call the Office for Civil Rights at 1-800-368-1019. TTY users should call 1-800-537-7697. You can also visit [hhs.gov/ocr/privacy](http://hhs.gov/ocr/privacy).

By law, Medicare is required to follow the terms in this privacy notice. Medicare has the right to change the way your personal medical information is used and given out. If Medicare makes any changes to the way your personal medical information is used and given out, you’ll get a new notice by mail within 60 days of the change.

**The Notice of Privacy Practices for Original Medicare is effective September 23, 2013.**

## How can I protect myself from identity theft?

Identity theft happens when someone uses your personal information without your consent to commit fraud or other crimes. Personal information includes things like your name and your Social Security, Medicare, credit card, or bank account numbers. Guard your card. Protect your Medicare number. Keep this information safe.

**Only give personal information, like your Medicare number, to doctors, other health care providers, and plans approved by Medicare; any insurer who pays benefits on your behalf; and to trusted people in the community who work with Medicare, like your State Health Insurance Assistance Program (SHIP) or Social Security.** Call 1-800-MEDICARE (1-800-633-4227) if you aren't sure if a provider is approved by Medicare. TTY users should call 1-877-486-2048.

If you suspect identity theft, or feel like you gave your personal information to someone you shouldn't have, call your local police department and the Federal Trade Commission's ID Theft Hotline at 1-877-438-4338. TTY users should call 1-866-653-4261. Visit [ftc.gov/idtheft](https://ftc.gov/idtheft) to learn more about identity theft.

## How can I protect myself & Medicare from fraud?

Most doctors, pharmacists, plans, and other health care providers who work with Medicare are honest. Unfortunately, there may be some who are dishonest. One common form of Medicare fraud is when Medicare is billed for services you never got. Medicare fraud costs everyone a lot of money each year.

Definitions  
of blue words  
are on pages  
145–148.

## Check your statements for mistakes

When you get health care services, record the dates on a calendar and save the receipts and statements you get from providers to check for mistakes. If you think you see an error or are billed for services you didn't get, do the following to find out what was billed:

- Check your “Medicare Summary Notice” (MSN) if you have Original Medicare to see if the service was billed to Medicare. If you're in a [Medicare plan](#), check the statements you get from your plan.
- If you know the health care provider or supplier, call and ask for an itemized statement. They should give this to you within 30 days.
- Visit [MyMedicare.gov](#) to view your Medicare claims if you have Original Medicare. Your claims are generally available online within 24 hours after processing. You can also download your claims information by using Medicare's Blue Button. See page 133. The sooner you see and report errors, the sooner we can stop fraud. You can also call 1-800-MEDICARE (1-800-633-4227). [TTY](#) users should call 1-877-486-2048.

**If you've contacted the provider and you suspect that Medicare is being charged for a service or supply that you didn't get, or you don't know the provider on the claim, call 1-800-MEDICARE.**

For more information on protecting yourself from Medicare fraud and tips for spotting and reporting fraud, visit [stopmedicarefraud.gov](#), or contact your local Senior Medicare Patrol (SMP) Program. See page 124.

You can also visit [oig.hhs.gov](#) or call the fraud hotline of the Department of Health and Human Services Office of the Inspector General at 1-800-HHS-TIPS (1-800-447-8477). [TTY](#) users should call 1-800-377-4950.

## Plans must follow rules

**Medicare plans** must follow certain rules when marketing their plans and getting your enrollment information. They can't ask you for credit card or banking information over the phone or via email, unless you're already a member of that plan. Medicare plans can't enroll you into a plan over the phone unless you call them and ask to enroll, or you've given them permission to contact you.

### Important!

**Call 1-800-MEDICARE (1-800-633-4227) to report any plans that:**

- Ask for your personal information over the phone
- Call to enroll you in a plan
- Use false information to mislead you

You can also call the Medicare Drug Integrity Contractor (MEDIC) at 1-877-7SAFERX (1-877-772-3379). The MEDIC helps prevent inappropriate activity and fights fraud, waste, and abuse in Medicare Advantage (Part C) and Medicare Prescription Drug (Part D) Programs.

For more information on the rules that Medicare plans must follow, visit [Medicare.gov/publications](https://www.Medicare.gov/publications) to view the booklet “Protecting Medicare and You from Fraud.” You can also call 1-800-MEDICARE (1-800-633-4227) to find out if a copy can be mailed to you. **TTY** users should call 1-877-486-2048.

## Reporting suspected Medicaid fraud

You can report Medicaid fraud to your State Medical Assistance (Medicaid) office. Medicaid fraud can also be reported to the OIG National Fraud hotline at 1-800-HHS-TIPS (1-800-447-8477).

## What's the Senior Medicare Patrol (SMP) Program?

The SMP Program educates and empowers people with Medicare to take an active role in detecting and preventing health care fraud and abuse. The SMP Program not only protects people with Medicare, it also helps preserve Medicare. There's an SMP Program in every state, the District of Columbia, Guam, the U.S. Virgin Islands, and Puerto Rico. Contact your local SMP Program to get personalized counseling, find out about community events in your area, or volunteer. For more information or to find your local SMP Program, visit [smpresource.org](https://smpresource.org), or call 1-877-808-2468. You can also call 1-800-MEDICARE.

Definitions of **blue** words are on pages 145–148.

### **Fighting fraud can pay**

You may get a reward if you help us fight fraud and meet certain conditions. For more information, visit [stopmedicarefraud.gov](http://stopmedicarefraud.gov), [Medicare.gov](http://Medicare.gov), or call 1-800-MEDICARE (1-800-633-4227).

TTY users should call 1-877-486-2048.

### **Investigating fraud takes time**

Every tip counts. Medicare takes all reports of suspected fraud seriously. When you report fraud, you may not hear of an outcome right away. It takes time to investigate your report and build a case, but rest assured that your information is helping us protect Medicare.



### **Am I protected from discrimination?**

Every company or agency that works with Medicare must obey the law. You can't be treated unfairly because of your race, color, national origin, disability, age, religion, or sex. See the inside of the back cover to read the full nondiscrimination notice and find out what to do if you haven't been treated fairly.

### **Is my right to my own health information protected?**

In most cases, you have the right to request and receive copies of your personal health records in an electronic or paper format from any health care provider. Your health information rights include:

- Right to access your health information in a paper or electronic form
- Right to know who has seen your health information
- Right to correct or amend your health information
- Right to receive a notice of privacy practices (a privacy policy)
- Right to file a complaint

For more information, or if you think your rights have been violated, visit [hhs.gov/ocr](http://hhs.gov/ocr) or call the Department of Health and Human Services, Office for Civil Rights at 1-800-368-1019. TTY users should call 1-800-537-7697.

### What’s the Medicare Beneficiary Ombudsman?

An “ombudsman” is a person who reviews complaints and helps resolve them. The Medicare Beneficiary Ombudsman makes sure you have information about:

- Your Medicare coverage
- Making good health care decisions
- Your Medicare rights and protections
- Getting issues resolved

The Ombudsman reviews the concerns raised by people with Medicare through 1-800-MEDICARE and through your State Health Insurance Assistance Program (SHIP).

Visit [Medicare.gov](http://Medicare.gov) for information on inquiries and complaints, activities of the Ombudsman, and what people with Medicare need to know.

### What’s the Long-term Care Ombudsman?



Residents of **long-term care** facilities (like nursing homes, assisted living, and board and care homes) also have access to a long-term care ombudsman. These ombudsmen provide information about how to find a facility, how to get quality care and can help you with complaints.

The long-term care ombudsman is funded by the Older Americans Act and is available to any long-term care facility resident.

For more information, visit

[ltcombudsman.org](http://ltcombudsman.org). You can also call the Eldercare Locator at 1-800-677-1116 to get the phone number for your local ombudsman program office.

Definitions  
of **blue** words  
are on pages  
145–148.

## Section 9—

# Plan Ahead for Long-Term Care

### How do I plan for long-term care?

**Long-term care** includes non-medical care for people who have a chronic illness or disability. This includes non-skilled personal care assistance, like help with everyday activities, including dressing, bathing, and using the bathroom. At least 70% of people over 65 will need long-term care services and support at some point. **Medicare and most health insurance plans, including Medicare Supplement Insurance (Medigap) policies, don't pay for this type of care, sometimes called “custodial care.”** Long-term care can be provided at home, in the community, in an assisted living facility, or in a nursing home. It's important to start planning for long-term care now to maintain your independence and to make sure you get the care you may need, in the setting you want, in the future.

### How do I pay for long-term care?

**Long-term care insurance**—This type of private insurance can help pay for many types of long-term care, including both skilled and non-skilled (custodial) care. Long-term care insurance policies can vary widely. Some policies may cover only nursing home care. Others may include coverage for a range of services, like adult day care, assisted living, medical equipment, and informal home care.

**Note:** Long-term care insurance doesn't replace your Medicare coverage.

Your current or former employer or union may offer **long-term care** insurance. Current and retired federal employees, active and retired members of the uniformed services, and their qualified relatives can apply for coverage under the Federal Long-Term Care Insurance Program. If you have questions, visit [opm.gov/insure/ltc](http://opm.gov/insure/ltc), or call the Federal Long-Term Care Insurance Program at 1-800-582-3337. **TTY** users should call 1-800-843-3557.

**Personal resources**—You can use your own resources to pay for long-term care. Some insurance companies let you use your life insurance policy to pay for long-term care. Ask your insurance agent how this works.

**Other private options**—Besides long-term care insurance and personal resources, you may choose to pay for long-term care through a trust or annuity. The best option for you depends on your age, health status, risk of needing long-term care, and your personal financial situation. Visit [longtermcare.gov](http://longtermcare.gov) for more information about your options.

**Medicaid**—Medicaid is a joint federal and state program that helps pay for certain health services for people with limited income and resources. If you qualify, you may be able to get help to pay for nursing home care or other health care costs.



If you're eligible for Medicaid, you may be able to get Medicaid services that help you stay in your home instead of moving to a nursing home. For more information, contact your State Medical Assistance (Medicaid) office. Visit [Medicare.gov/contacts](http://Medicare.gov/contacts) or call 1-800-MEDICARE (1-800-633-4227), and say "Medicaid" to get the phone number. **TTY** users should call 1-877-486-2048. See page 110 for more information about Medicaid.

Definitions  
of **blue** words  
are on pages  
145–148.





**Veterans' benefits**—The Department of Veterans Affairs (VA) may provide [long-term care](#) for service-related disabilities or for certain eligible veterans. The VA also has a Housebound and Aid and Attendance Allowance Program that provides cash grants to eligible disabled veterans and surviving spouses. For more information, visit [va.gov](#), or call the VA at 1-800-827-1000. [TTY](#) users should call 1-800-829-4833.

**Programs of All-inclusive Care for the Elderly (PACE)**—PACE is a Medicare and Medicaid program offered in many states that allows people who otherwise need a nursing home-level of care to remain in the community. See page 84 for more information.

### Long-term care contacts

Use these resources to get more information about long-term care:

- Visit [longtermcare.gov](#) to learn more about planning for long-term care.
- Visit [Medicare.gov/nhcompare](#) to compare nursing homes or [Medicare.gov/hhcompare](#) to compare home health agencies in your area.
- Call 1-800-MEDICARE (1-800-633-4227). TTY users should call 1-877-486-2048.
- Call your State Insurance Department to get information about long-term care insurance. Call 1-800-MEDICARE to get the phone number.
- Call your State Health Insurance Assistance Program (SHIP). See pages 141–144 for the phone number.
- Call the National Association of Insurance Commissioners at 1-866-470-6242 to get a copy of “A Shopper’s Guide to Long-Term Care Insurance.”
- Visit the Eldercare Locator, a public service of the U.S. Administration on Aging, at [eldercare.gov](#) to find your local Aging and Disability Resource Center (ADRC). You can also call 1-800-677-1116. ADRCs offer a full range of long-term care services and support in a single, coordinated program.

## What are advance directives?

Advance directives are legal documents that allow you to put in writing what kind of health care you would want or name someone who can speak for you if you were too ill to speak for yourself.



These legal documents help ensure your wishes are followed, but it's important to talk to your family, friends, and health care providers about your wishes. You should also make sure that your family, friends, and health care providers have copies of your legal documents. It's better to think about these important decisions and have plans in place before you're ill or a crisis strikes.

### Advance directives most often include:

- **A health care proxy** (sometimes called a “durable power of attorney for health care”). This is used to name the person you want to make health care decisions for you if you aren't able to make them yourself.
- **A living will.** This is another way to make sure your voice is heard. It states which medical treatment you would accept or refuse if your life is threatened.
- **After-death wishes.** These may include choices like organ and tissue donation.

Each state has its own laws for creating advance directives. Some states may allow you to combine your advance directives in one document.

### What if I already have advance directives?

Take time now to review them to be sure you're still satisfied with your decisions and the person you identify in your health care proxy is still willing and able to carry out your plans. Find out how to cancel or update them in your state if they no longer reflect your wishes.

For more information, contact your health care provider, an attorney, your local Area Agency on Aging, your state health department, or visit [eldercare.gov](http://eldercare.gov).

Definitions of blue words are on pages 145–148.

# Section 10— Get More Information

## Where can I get personalized help?

**1-800-MEDICARE (1-800-633-4227)**

**TTY users call 1-877-486-2048**

**Get information 24 hours a day, including weekends**

- Speak clearly, have your Medicare card in front of you, and be ready to provide your Medicare number. This helps reduce the amount of time you may wait to speak to a customer service representative. It also allows us to play messages that may specifically impact your coverage and may help us get you to a representative more quickly.
- To enter your Medicare number, speak the numbers and letter(s) clearly one at a time. Or, enter your Medicare number on the phone keypad. Use the star key to indicate any place there may be a letter. For example, if your Medicare number is 000-00-0000A, you would enter 0-0-0-0-0-0- 0-0-0-0-\*. The voice system will then ask you for that letter.
- Use 1 or 2 words to briefly say what you're calling about.

**Tip: You can say “Agent” at anytime to talk to a customer service representative.**

If you need help in a language other than English or Spanish, let the customer service representative know.

**Important!**

If you want someone to be able to call 1-800-MEDICARE on your behalf, you need to let Medicare know in writing. You can fill out a “Medicare Authorization to Disclose Personal Health Information” form so Medicare can give your personal health information to someone other than you. You can do this by visiting



Medicare.gov/medicareonlineforms or by calling 1-800-MEDICARE (1-800-633-4227) to get a copy of the form. TTY users should call 1-877-486-2048. You may want to do this now in case you become unable to do it later.

People who get benefits from the Railroad Retirement Board (RRB) should call 1-800-833-4455 with questions about Part B services and bills.

### **Did your household get more than one copy of “Medicare & You?”**

If you want to get only one copy in the future, call 1-800-MEDICARE. If you get RRB benefits, call 1-877-772-5772. TTY users should call 1-312-751-4701. If you want to get the handbook electronically and not get any future copies in the mail, visit MyMedicare.gov.

### **What are State Health Insurance Assistance Programs (SHIPs)?**

SHIPs are state programs that get money from the federal government to give local health insurance counseling to people with Medicare. SHIPs aren’t connected to any insurance company or health plan. SHIP volunteers work hard to help you with the following Medicare questions or concerns:

- Your Medicare rights
- Billing problems
- Complaints about your medical care or treatment
- Plan choices
- How Medicare works with other insurance

Definitions of blue words are on pages 145–148.

**See pages 141–144 for the phone number of your local SHIP. If you would like to become a volunteer SHIP counselor, contact the SHIP in your state to learn more.**

## Where can I find Medicare information online?

### Need general information about Medicare?

#### Visit Medicare.gov

- Get detailed information about the Medicare health and prescription drug plans in your area, including what they cost and what services they provide.
- Find doctors or other health care providers and suppliers who participate in Medicare.
- See what Medicare covers, including [preventive services](#).
- Get Medicare appeals information and forms.
- Get information about the quality of care provided by plans, nursing homes, hospitals, home health agencies, and dialysis facilities.
- Look up helpful websites and phone numbers.

### Need personalized Medicare information?

#### Register at MyMedicare.gov

- Complete your “Initial Enrollment Questionnaire” so your claims can get paid correctly.
- Manage your personal information (like medical conditions, allergies, and implanted devices).
- Sign up to get this handbook electronically. You won’t get a printed copy if you choose to get it electronically.
- Manage your personal drug list and pharmacy information.
- Search for, add to, and manage a list of your favorite providers and access quality information about them.
- Track Original Medicare claims and your Part B [deductible](#) status.
- View and order copies of your “Medicare Summary Notices.”



Get access to your personal health information using Medicare’s Blue Button. This feature lets you download 12–36 months of claims information for Part A and Part B and 12 months of claims information for Part D. This information can help you make more informed decisions about your care and can give your health care providers a more complete view of your health history. Visit MyMedicare.gov to use the Blue Button today.

## Do you have family and friends who don't have health insurance?

Tell them to visit [HealthCare.gov](https://www.healthcare.gov) to:

- Take control of your health care with new information and resources that will help you access quality and affordable health coverage.
- Find public and private health coverage options tailored to your needs in a single easy-to-use tool.

## How do I compare the quality of plans and providers?



Medicare collects information about the quality and safety of medical care and services given by most [Medicare plans](#) and health care providers. Medicare also has information about the experiences of people with the care and services they get.

Compare the quality of care (how well plans and providers work to give you the best care possible) and services given by health and prescription drug plans or health care providers nationwide by visiting [Medicare.gov](https://www.Medicare.gov) or by calling your State Health Insurance Assistance Program (SHIP). See pages 141–144 for the phone number.

When you, a family member, friend, or SHIP counselor visit [Medicare.gov](https://www.Medicare.gov), select “Forms, Help, & Resources” to use these tools:

- “Hospital Compare”
- “Nursing Home Compare”
- “Home Health Compare”
- “Dialysis Facility Compare”
- “Physician Compare”
- “Medicare Plan Finder”

Definitions of [blue](#) words are on pages 145–148.

These search tools on Medicare.gov give you a “snapshot” of the quality of care and services some plans and providers give. Medicare Plan Finder and Nursing Home Compare both feature a star rating system to help you compare plans and quality of care measures that are important to you. Find out more about the quality of care and services by:

- Asking what your plan or provider does to ensure and improve the quality of care and services. Each plan and health care provider should have someone you can talk to about quality.
- Asking your doctor or other health care provider what he or she thinks about the quality of care or services the plan or other providers give. You can also talk to your doctor or other health care provider about Medicare’s information on quality of care and services.

## What’s Medicare doing to better coordinate my care?

Medicare continues to look for ways to better coordinate your care and to make sure that you get the best health care possible. Health information technology (also called Health IT) and improved ways to deliver your care can help manage your health information, improve how you communicate with your health care providers, and improve the quality and coordination of your health care. These tools also reduce paperwork, medical errors, and health care costs.

Here are examples of how your **health care providers** can better coordinate your care:

**Electronic Health Records (EHRs)**—A record that your doctor, other health care provider, medical office staff, or a hospital keeps on a computer about your health care or treatments.

- EHRs can help lower the chances of medical errors, eliminate duplicate tests, and may improve your overall quality of care.
- Your doctor’s EHR may be able to link to a hospital, lab, pharmacy, or other doctors, so the people who care for you can have a more complete picture of your health. You also have the right to get a copy of your health information for your own personal use and to make sure the information is complete and accurate.

**Electronic prescribing**—An electronic way for your prescribers (your doctor or other health care provider who is legally allowed to write prescriptions) to send your prescriptions directly to your pharmacy. Electronic prescribing can save you money, time, and help keep you safe.

- You don't have to drop off and wait for your prescription. Your prescription may be ready when you arrive.
- Prescribers can check which drugs your insurance covers and may be able to prescribe a drug that costs you less.
- Electronic prescriptions are easier for the pharmacist to read than handwritten prescriptions. This means there's less chance that you'll get the wrong drug or dose.
- Prescribers can be alerted to potential drug interactions, allergies, and other warnings.

**Accountable Care Organizations (ACOs)**—An ACO is a group of doctors and other health care providers who agree to work together with Medicare to give you more coordinated service and care. ACOs are designed to help your doctors or primary care providers communicate closely with your other health care providers, so they can deliver high-quality care that meets your individual needs and preferences.

If you have Original Medicare and your doctor has decided to participate in an ACO, you'll be notified (either in person or by letter) that your doctor is participating in an ACO.

The notice will also inform you that Medicare will share information about care you received from your doctors and other providers. With this information, the doctors and health care providers in the ACO will know more about care you got from other health care providers, giving them a more complete picture of your health. If you don't want Medicare to share this information, the notice will also give you instructions on how you can decline to have certain identifiable claims information shared with the ACO for purposes of care coordination.

Your Medicare benefits, services, and protections won't change if your doctor participates in an ACO. You still have the right to visit and receive care from any doctor or hospital that accepts Medicare at any time, the same way you do now.

Definitions of blue words are on pages 145–148.

For more information, visit [Medicare.gov/acos.html](https://www.medicare.gov/acos.html), or call 1-800-MEDICARE (1-800-633-4227). TTY users should call 1-877-486-2048.



**Comprehensive Primary Care Initiative**—The Comprehensive Primary Care Initiative is a partnership between Medicare and other insurance programs and organizations to help selected primary care providers and their practices provide additional resources to improve the quality of care. Primary care practices can use these resources to make improvements to their practice, like hiring new staff and updating technology to better coordinate their patients' care.



If your **primary care doctor** or practice is participating in this initiative, you'll get a notice in the mail. The notice will also tell you that Medicare will share some of your personal health information with your doctor's practice so they have the most up-to-date information about your health. This includes information about the care you get from other doctors or health care providers. If you don't want Medicare to share this information, the letter will tell you what to do.

The Comprehensive Primary Care Initiative is underway in about 500 primary care practices in 7 parts of the country:

- Arkansas (whole state)
- Colorado (whole state)
- New Jersey (whole state)
- New York (Capital District-Hudson Valley region)
- Ohio & Kentucky (Cincinnati-Dayton region)
- Oklahoma (Tulsa)
- Oregon (whole state)

For more information, visit [Medicare.gov](https://www.Medicare.gov), or call 1-800-MEDICARE (1-800-633-4227). TTY users should call 1-877-486-2048.

## Can I manage my health information online?

Here's what **you** can do to help manage your health information:

**Personal Health Records (PHRs)**—A record with information about your health that you or someone helping you keeps on a computer for easy reference.

- You can manage your health information from anywhere you have Internet access.
- You can keep track of health information, like the date of your last yearly “Wellness” visit, major illnesses, operations, allergies, or a list of your prescriptions.
- Health care providers and hospitals who use electronic health records (EHRs) sometimes offer patients a way to view their health records online and download the information so they can share it with others they trust. In many cases, you can add this information to a PHR or other application that you control and manage. That includes claims data downloaded with Medicare’s Blue Button on MyMedicare.gov.
- PHRs are often offered by providers, health plans, and private companies. Some are free, while others charge fees.
- When you use a PHR, make sure that it’s on a secure website. With a secure website, you usually have to create a unique user ID and password, and the information you type is encrypted (put in code) so other people can’t read it.
- Read the PHR’s notice of privacy practices. It should tell you how the PHR is protecting your information and how it may use or disclose your information.

Definitions  
of **blue** words  
are on pages  
145–148.

## Are there other ways to get Medicare information?

### Publications



Visit [Medicare.gov/publications](https://www.medicare.gov/publications) to view, print, or download copies of booklets, brochures, or fact sheets on different Medicare topics. You can search by keyword (like “rights” or “mental health”), or select “View All Publications.” If the publication you want has a check box after “Order Publication,” you can have a printed copy mailed to you. You can also call

1-800-MEDICARE (1-800-633-4227) and say “Publications” to find out if a printed copy can be mailed to you. TTY users should call 1-877-486-2048. Alternate formats are available at no cost. See the inside of the back cover for more information about auxiliary aids and services for people with disabilities.

### Videos



Visit [YouTube.com/cmshhsgov](https://www.youtube.com/cmshhsgov) to see videos covering different health care topics on Medicare’s YouTube channel.

### Messages/Tweets



Follow official Medicare information at [@MedicareGov](https://twitter.com/MedicareGov) and the Children’s Health Insurance Program at [@IKNGov](https://twitter.com/IKNGov).

### Blogs

Visit [blog.medicare.gov/](https://blog.medicare.gov/) for up-to-date news from our website.

## Are resources available for caregivers?

Yes, Medicare has resources to help you get the information you need. To find out more:

- Visit [Medicare.gov/caregivers](https://www.medicare.gov/caregivers) to help someone you care for choose a drug plan, compare nursing homes, get help with billing, and more.
- Visit the Eldercare Locator, a public service of the U.S. Administration on Aging, at [eldercare.gov](https://www.eldercare.gov), or call 1-800-677-1116 to find caregiver support services in your area.
- Visit the Patients & Families section of [HealthIT.gov](https://www.healthit.gov) for information about online resources and other eHealth tools designed to support caregivers.

## State Health Insurance Assistance Program (SHIPs)

For help with questions about appeals, buying other insurance, choosing a health plan, buying a Medigap policy, and Medicare rights and protections.

This page has been intentionally left blank. The printed version contains phone number information. For the most recent phone number information, please visit [Medicare.gov/contacts](https://www.Medicare.gov/contacts). Thank you.

This page has been intentionally left blank. The printed version contains phone number information. For the most recent phone number information, please visit [Medicare.gov/contacts](https://www.Medicare.gov/contacts). Thank you.

This page has been intentionally left blank. The printed version contains phone number information. For the most recent phone number information, please visit [Medicare.gov/contacts](https://www.Medicare.gov/contacts). Thank you.

This page has been intentionally left blank. The printed version contains phone number information. For the most recent phone number information, please visit [Medicare.gov/contacts](https://www.Medicare.gov/contacts). Thank you.



# Section 11—Definitions

**Assignment**—An agreement by your doctor, provider, or supplier to be paid directly by Medicare, to accept the payment amount Medicare approves for the service, and not to bill you for any more than the Medicare deductible and coinsurance.

**Benefit period**—The way that Original Medicare measures your use of hospital and skilled nursing facility (SNF) services. A benefit period begins the day you're admitted as an inpatient in a hospital or skilled nursing facility. The benefit period ends when you haven't received any inpatient hospital care (or skilled care in a SNF) for 60 days in a row. If you go into a hospital or a SNF after one benefit period has ended, a new benefit period begins. You must pay the inpatient hospital deductible for each benefit period. There's no limit to the number of benefit periods.

**Coinsurance**—An amount you may be required to pay as your share of the cost for services after you pay any deductibles. Coinsurance is usually a percentage (for example, 20%).

**Copayment**—An amount you may be required to pay as your share of the cost for a medical service or supply, like a doctor's visit, hospital outpatient visit, or prescription. A copayment is usually a set amount, rather than a percentage. For example, you might pay \$10 or \$20 for a doctor's visit or prescription.

**Creditable prescription drug coverage**—Prescription drug coverage (for example, from an employer or union) that's expected to pay, on average, at least as much as Medicare's standard prescription drug coverage. People who have this kind of coverage when they become eligible for Medicare can generally keep that coverage without paying a penalty if they decide to enroll in Medicare prescription drug coverage later.

**Critical access hospital**—A small facility that provides outpatient services, as well as inpatient services on a limited basis, to people in rural areas.

**Custodial care**—Nonskilled personal care, like help with activities of daily living like bathing, dressing, eating, getting in or out of a bed or chair, moving around, and using the bathroom. It may also include the kind of health-related care that most people do themselves, like using eye drops. In most cases, Medicare doesn't pay for custodial care.

**Deductible**—The amount you must pay for health care or prescriptions before Original Medicare, your prescription drug plan, or your other insurance begins to pay.

**Demonstrations**—Special projects, sometimes called “pilot programs” or “research studies,” that test improvements in Medicare coverage, payment, and quality of care. They usually only operate for a limited time, for a specific group of people, and in specific areas.

**Extra Help**—A Medicare program to help people with limited income and resources pay Medicare prescription drug plan costs, like premiums, deductibles, and coinsurance.

**Formulary**—A list of prescription drugs covered by a prescription drug plan or another insurance plan offering prescription drug benefits.

**Inpatient rehabilitation facility**—A hospital, or part of a hospital, that provides an intensive rehabilitation program to inpatients.

**Institution**—For the purposes of this publication, an institution is a facility that provides short-term or long-term care, such as a nursing home, skilled nursing facility (SNF), or rehabilitation hospital. Private residences, such as an assisted living facility or group home, aren't considered institutions for this purpose.

**Lifetime reserve days**—In Original Medicare, these are additional days that Medicare will pay for when you're in a hospital for more than 90 days. You have a total of 60 reserve days that can be used during your lifetime. For each lifetime reserve day, Medicare pays all covered costs except for a daily coinsurance.

**Long-term care**—Services that include medical and non-medical care provided to people who are unable to perform basic activities of daily living, like dressing or bathing. Long-term supports and services can be provided at home, in the community, in assisted living, or in nursing homes. Individuals may need long-term supports and services at any age. Medicare and most health insurance plans don't pay for long-term care.

**Long-term care hospital**—Acute care hospitals that provide treatment for patients who stay, on average, more than 25 days. Most patients are transferred from an intensive or critical care unit. Services provided include comprehensive rehabilitation, respiratory therapy, head trauma treatment, and pain management.

**Medically necessary**—Health care services or supplies needed to prevent, diagnose, or treat an illness, injury, condition, disease, or its symptoms and that meet accepted standards of medicine.

**Medicare-approved amount**—In Original Medicare, this is the amount a doctor or supplier that accepts assignment can be paid. It may be less than the actual amount a doctor or supplier charges. Medicare pays part of this amount and you're responsible for the difference.

**Medicare health plan**—A plan offered by a private company that contracts with Medicare to provide Part A and Part B benefits to people with Medicare who enroll in the plan. Medicare health plans include all Medicare Advantage Plans, Medicare Cost Plans, Demonstration/Pilot Programs and Programs of All-inclusive Care for the Elderly (PACE).

**Medicare plan**—Refers to any way other than Original Medicare that you can get your Medicare health or prescription drug coverage. This term includes all Medicare health plans and Medicare Prescription Drug Plans.

**Premium**—The periodic payment to Medicare, an insurance company, or a health care plan for health or prescription drug coverage.

**Preventive services**—Health care to prevent illness or detect illness at an early stage, when treatment is likely to work best (for example, preventive services include Pap tests, flu shots, and screening mammograms.)

**Primary care doctor**—The doctor you see first for most health problems. He or she makes sure you get the care you need to keep you healthy. He or she also may talk with other doctors and health care providers about your care and refer you to them. In many Medicare Advantage Plans, you must see your primary care doctor before you see any other health care provider.

**Primary care practitioner**—A doctor who has a primary specialty in family medicine, internal medicine, geriatric medicine, or pediatric medicine; or a nurse practitioner, clinical nurse specialist, or physician assistant.

**Quality Improvement Organization (QIO)**—A group of practicing doctors and other health care experts paid by the federal government to check and improve the care given to people with Medicare.

**Referral**—A written order from your primary care doctor for you to see a specialist or get certain medical services. In many Health Maintenance Organizations (HMOs), you need to get a referral before you can get medical care from anyone except your primary care doctor. If you don't get a referral first, the plan may not pay for the services.

**Service area**—A geographic area where a health insurance plan accepts members if it limits membership based on where people live. For plans that limit which doctors and hospitals you may use, it's also generally the area where you can get routine (non-emergency) services. The plan may disenroll you if you move out of the plan's service area.

**Skilled nursing facility (SNF) care**—Skilled nursing care and rehabilitation services provided on a continuous, daily basis, in a skilled nursing facility. Examples of skilled nursing facility care include physical therapy or intravenous injections that can only be given by a registered nurse or doctor.

**TTY**—A teletypewriter (TTY) is a communication device used by people who are deaf, hard-of-hearing, or have a severe speech impairment. People who don't have a TTY can communicate with a TTY user through a message relay center (MRC). An MRC has TTY operators available to send and interpret TTY messages.



## Part A and Part B costs

The 2014 [premium](#) and [deductible](#) amounts for Part A and Part B weren't available to include at the time of printing. To get the most up-to-date information on these costs, visit [Medicare.gov](http://Medicare.gov) or call 1-800-MEDICARE (1-800-633-4227). [TTY](#) users should call 1-877-486-2048.

## Part C and Part D (Medicare health & prescription drug plans) costs for covered services & supplies

Cost information for the [Medicare plans](#) in your area can be found by:

- Visiting [Medicare.gov](http://Medicare.gov).
- Contacting the plan.
- Calling 1-800-MEDICARE.
- Calling your State Health Insurance Assistance Program (SHIP). See the pages 141–144 for the phone number.

Medicare Advantage Plans (like an HMO or PPO) must cover all Part A and Part B-covered services and supplies. Check your plan's materials for actual amounts.

Definitions of [blue](#) words are on pages 145–148.

Medicare cares about what you think. If you have general comments about this handbook, email us at [medicareandyou@cms.hhs.gov](mailto:medicareandyou@cms.hhs.gov). We can't respond to every comment, but we'll consider your feedback when writing future versions.

## **Nondiscrimination Notice**

Every company or agency that works with Medicare must obey the law. Accordingly, you can't be treated unfairly because of your race, color, national origin, disability, age, religion, or sex. If you think that you've been discriminated against or treated unfairly for any of these reasons, call the Department of Health and Human Services, Office for Civil Rights at 1-800-368-1019. TTY users should call 1-800-537-7697. You can also visit [www.hhs.gov/ocr](http://www.hhs.gov/ocr) for more information.

## **Auxiliary aids and services for people with disabilities**

Medicare is committed to making its programs, benefits, services, facilities, information, and technology accessible to everyone, in accordance with Sections 504 and 508 of the Rehabilitation Act of 1973. Medicare will take appropriate steps to make sure that people with disabilities, including people who are deaf, hard of hearing, blind, low vision, or who have other sensory limitations, have an equal opportunity to participate in its services, activities, programs, and other benefits. Medicare provides these services or aids to better communicate with people with disabilities:

- **Relay service**

Medicare uses relay services for telephone communication with external TTY users. Medicare accepts and makes calls through a relay service. The relay service number is 1-877-486-2048.

- **Alternate formats**

This handbook is available in the following alternate formats: large print (industry standard 18-point font), Braille, and audio. You can get an alternate format handbook by calling 1-800-MEDICARE (1-800-633-4227). TTY users should call 1-877-486-2048. You can also get this handbook in podcast and digital version (e-book) by visiting [Medicare.gov/publications](http://Medicare.gov/publications).

**U.S. DEPARTMENT OF  
HEALTH AND HUMAN SERVICES**

Centers for Medicare & Medicaid Services  
7500 Security Boulevard  
Baltimore, Maryland 21244-1850

---

Official Business  
Penalty for Private Use, \$300

CMS Product No. 10050  
September 2013

## National Medicare Handbook

- Also available in Spanish and alternate formats, including Braille, CD, and large print (standard 18-point font in English and Spanish).
- Moving? Call Social Security at 1-800-772-1213. TTY users should call 1-800-325-0778. If you get RRB benefits, contact the RRB at 1-877-772-5772. TTY users should call 1-312-751-4701

¿Necesita usted una copia de este manual en Español?  
Llame al 1-800-MEDICARE (1-800-633-4227).  
Los usuarios de TTY deberán llamar al 1-877-486-2048.

If you need help in a language other than English or Spanish, call 1-800-MEDICARE and say “Agent.” Then tell the customer service representative the language you speak, so you can get free translation services.



Medicare.gov  
1-800-MEDICARE (1-800-633-4227)  
TTY 1-877-486-2048



10% recycled paper